

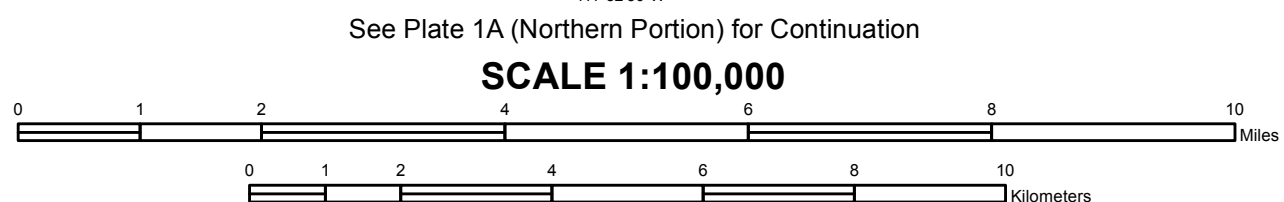
Base from 2014 Bing Aerial Imagery.  
Quaternary fault traces from UGS Fault and Fold Database of Utah (Black and others, 2003), and UGS Fault and Fold Database of the United States.  
Photo center points and base map in NAD 1983.

This open-file release makes information available to the public that may not conform to UGS technical, editorial, or policy standards; this should be considered by an individual or group planning to take action based on the contents of this report.

Although this product represents the work of professional scientists, the Utah Department of Natural Resources, Utah Geological Survey, makes no warranty, expressed or implied, regarding its suitability for a particular use. The Utah Department of Natural Resources, Utah Geological Survey, shall not be liable under any circumstances for any direct, indirect, special, incidental, or consequential damages with respect to claims by users of this product.

Utah Geological Survey  
1584 West North Temple, Suite 3110  
P.O. Box 146100, Salt Lake City, UT 84114-6100  
Phone: 801-537-3300 Fax: 801-537-3400  
geology.utah.gov

Since the aerial photograph frame center-points are estimated, some undetermined positional error exists between the frame center points and the actual ground locations.



# INDEX MAP OF AERIAL PHOTOGRAPHY, WASATCH FAULT, EARTHQUAKE FAULT INVESTIGATION AND EVALUATION NORTH OF BRIGHAM CITY AND CACHE VALLEY FAULTS, BOX ELDER, CACHE, AND WEBER COUNTIES, UTAH, AND FRANKLIN AND ONEIDA COUNTIES, IDAHO

Steve D. Bowman, Adam I. Hiscock, and Corey D. Unger  
2015

## Explanation

- Approximate Frame Center Points
- Northern Portion Frame Center Points (Plate 1A)
- Quaternary Faults
- U.S. Geological Survey 1:24,000 Map Quadrangles
- County Boundary
- Interstate Highway
- Divided Highway
- State Highway
- Other Roads

