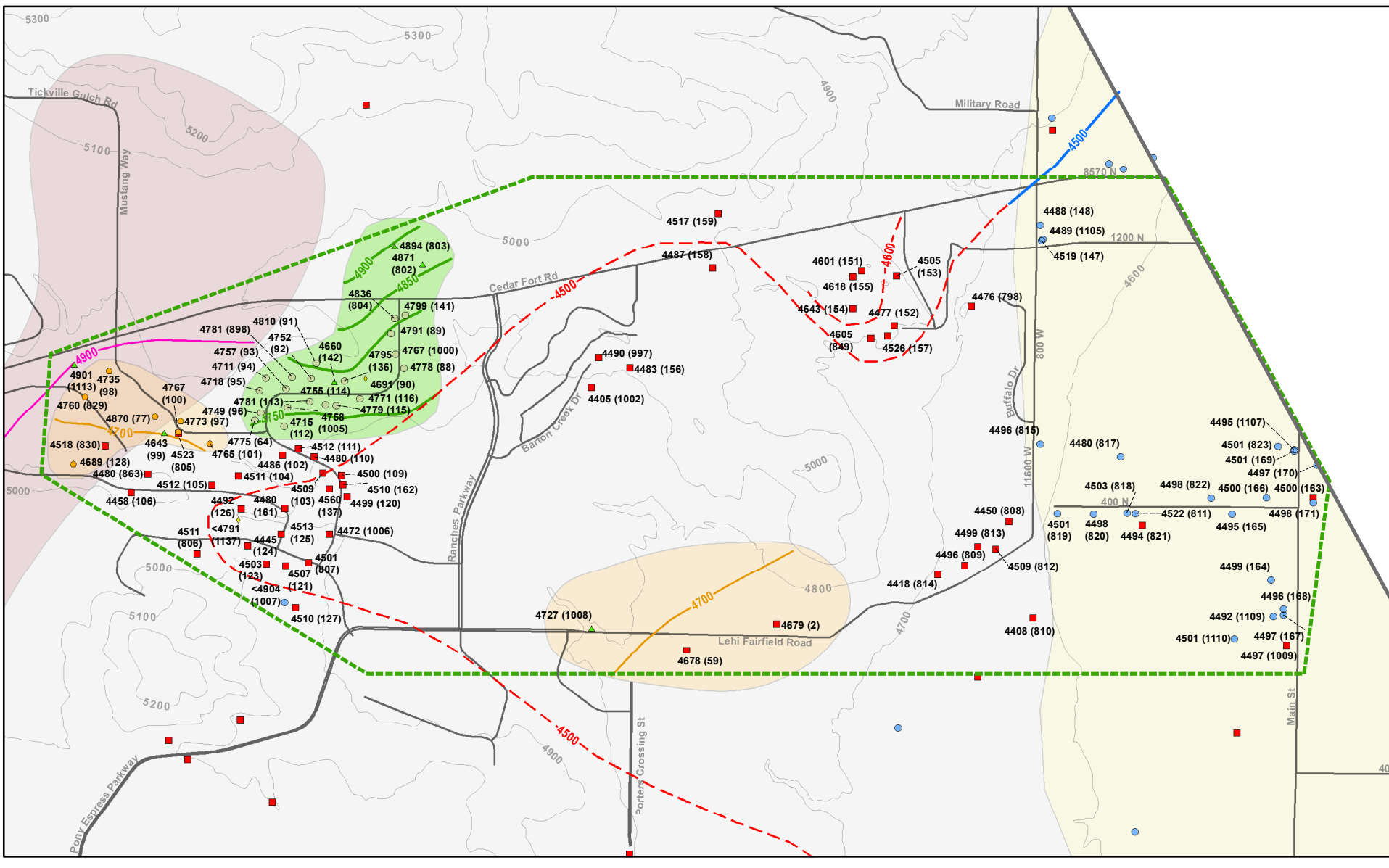
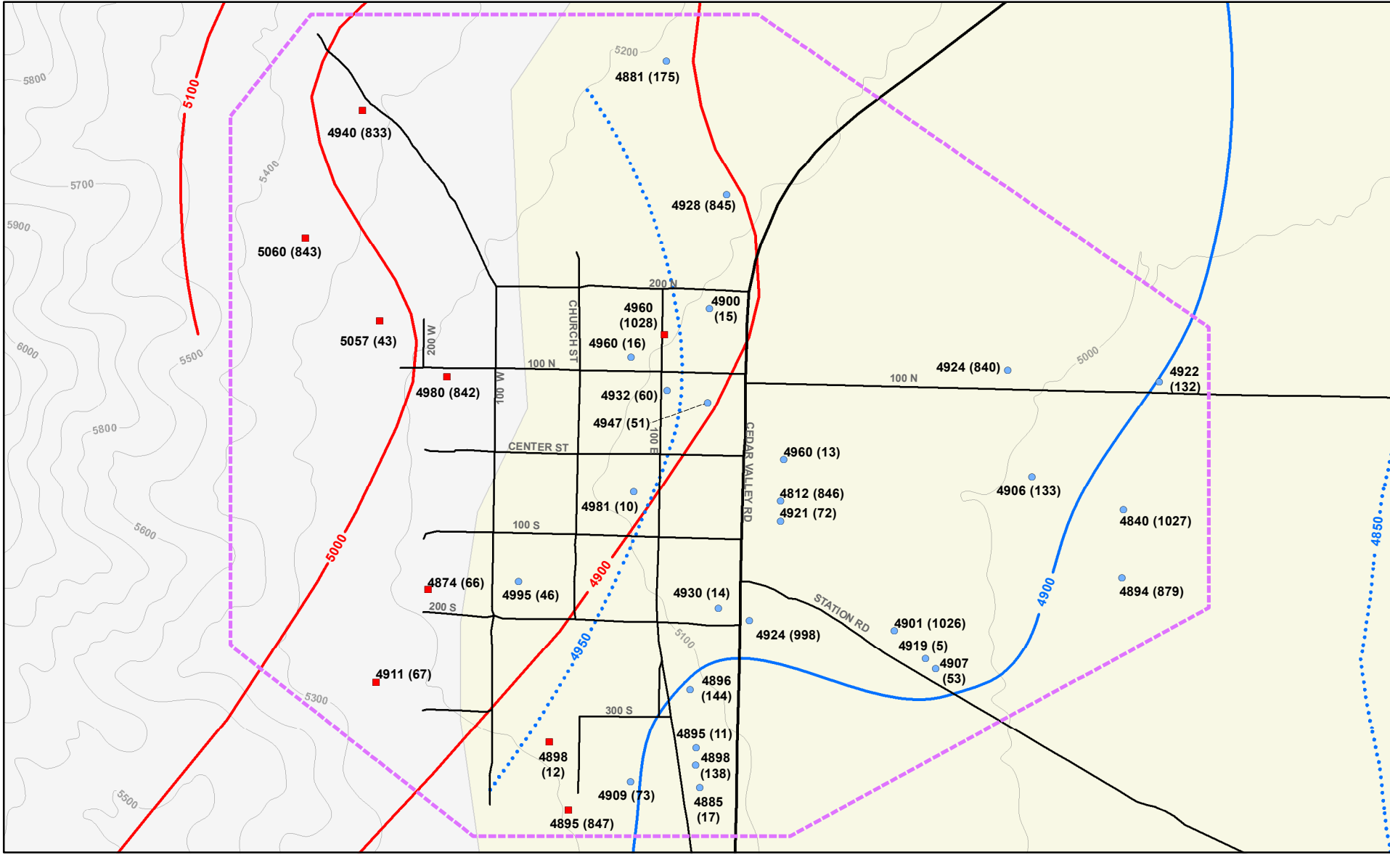


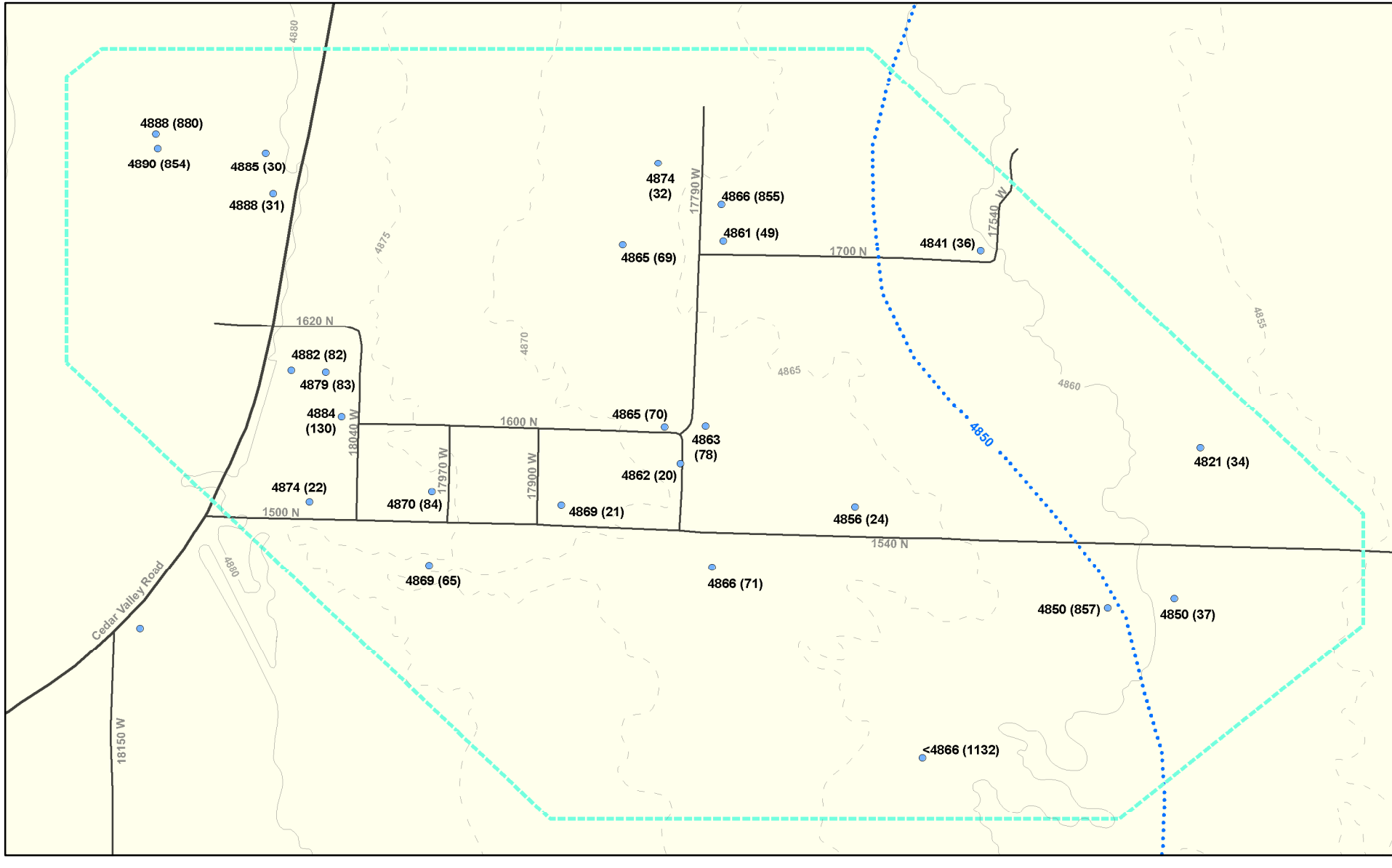
Detail of Cedar Pass area



Detail of Cedar Fort area



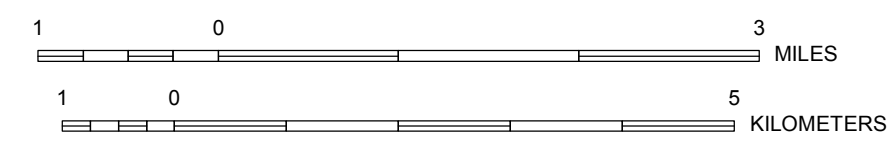
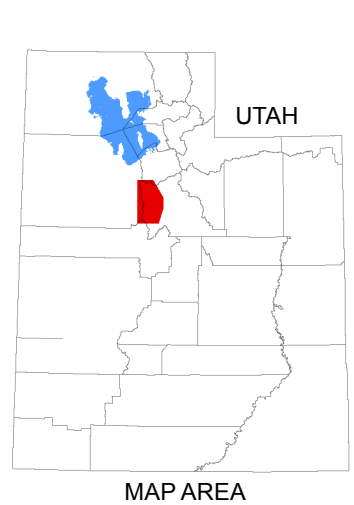
Detail of Fairfield area



Explanation

- | | | | | |
|---|---|------------------------|--------------------|------------------------------|
| Water Level Contours (elevation in feet) | Basin fill - dashed where inferred | Basin fill and bedrock | Basin fill | Tertiary volcanic bedrock |
| | Basin-fill supplemental 50' | Perched aquifer | Perched basin fill | Deep bedrock at Toplift Hill |
| | Bedrock aquifer - dashed where inferred | | Perched bedrock | Surface water body |
- Well completed in:**
- Bedrock
 - Basin fill, perched
 - Bedrock, perched
 - Unknown aquifer
 - Basin fill
 - Crosses multiple aquifers

4813(1003) Water level elevation in feet (UGS well ID see appendix A)
See appendix C, table C-2 for water-level information.



Highest priority for contouring was given to 52 water levels measured in March 2005, secondary priority was given to 26 levels measured between October 2004 and July 2005, tertiary consideration was given to 269 levels measured by drillers after well drilling. Data were primarily hand contoured.

Although the product represents the work of professional scientists, the Utah Department of Natural Resources, Utah Geological Survey, makes no warranty, expressed or implied, regarding its suitability for a particular use, and does not guarantee accuracy or completeness of the data. The Utah Department of Natural Resources, Utah Geological Survey, shall not be liable under any circumstances for any direct, indirect, special, incidental, or consequential damages with respect to claims by users of this product. For use at 1:25,000 scale only.

Datum: NAD 1983 Zone 12 N
Projection: Universal Transverse Mercator
Spheroid: Clarke 1866
Contours in detail areas generated from 10 meter national elevation dataset produced by the USGS
Base map from USGS 1:100,000 topographic map
Cartography: Richard Emerson

