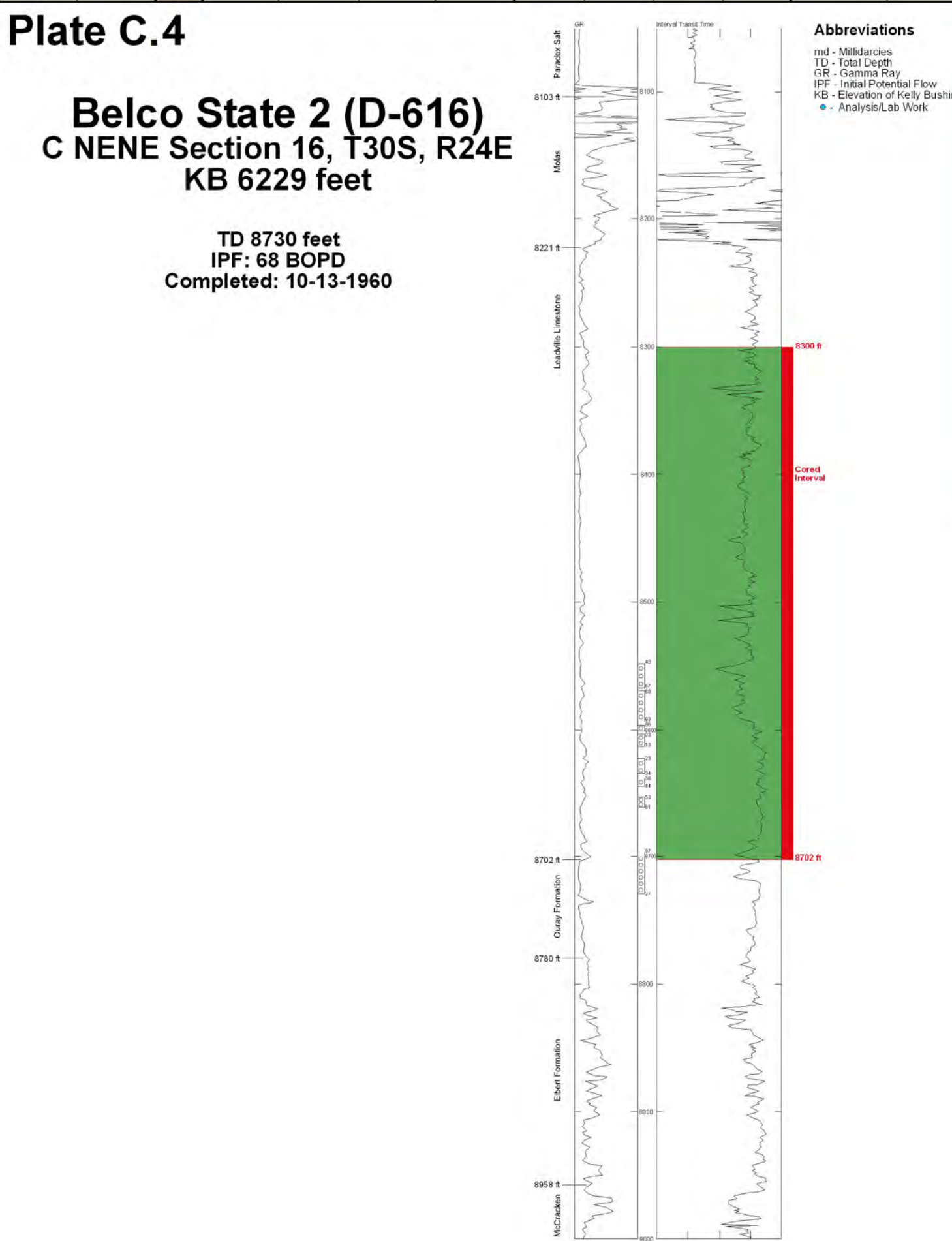
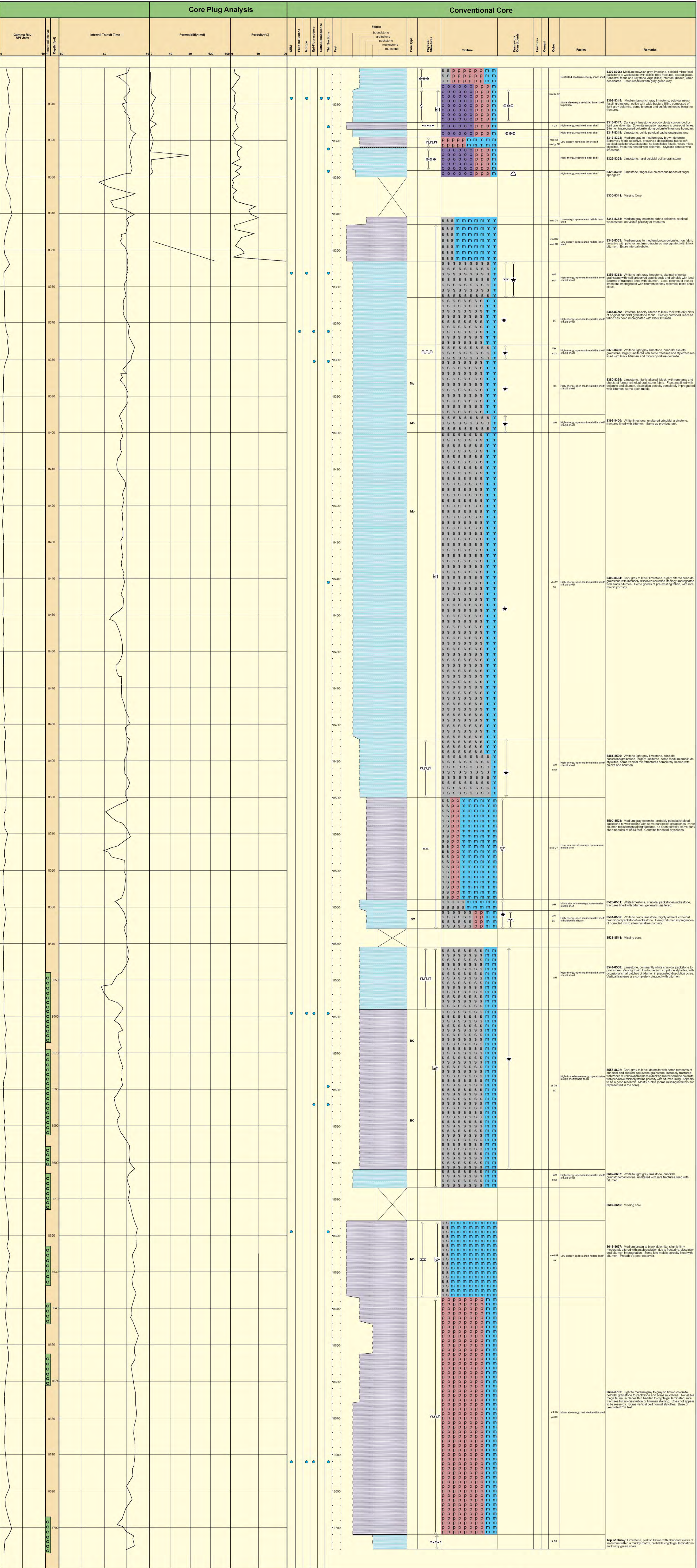


APPENDIX C:

GEOPHYSICAL WELL LOGS TIED TO CORE

DESCRIPTIONS, LISBON FIELD,

SAN JUAN COUNTY, UTAH



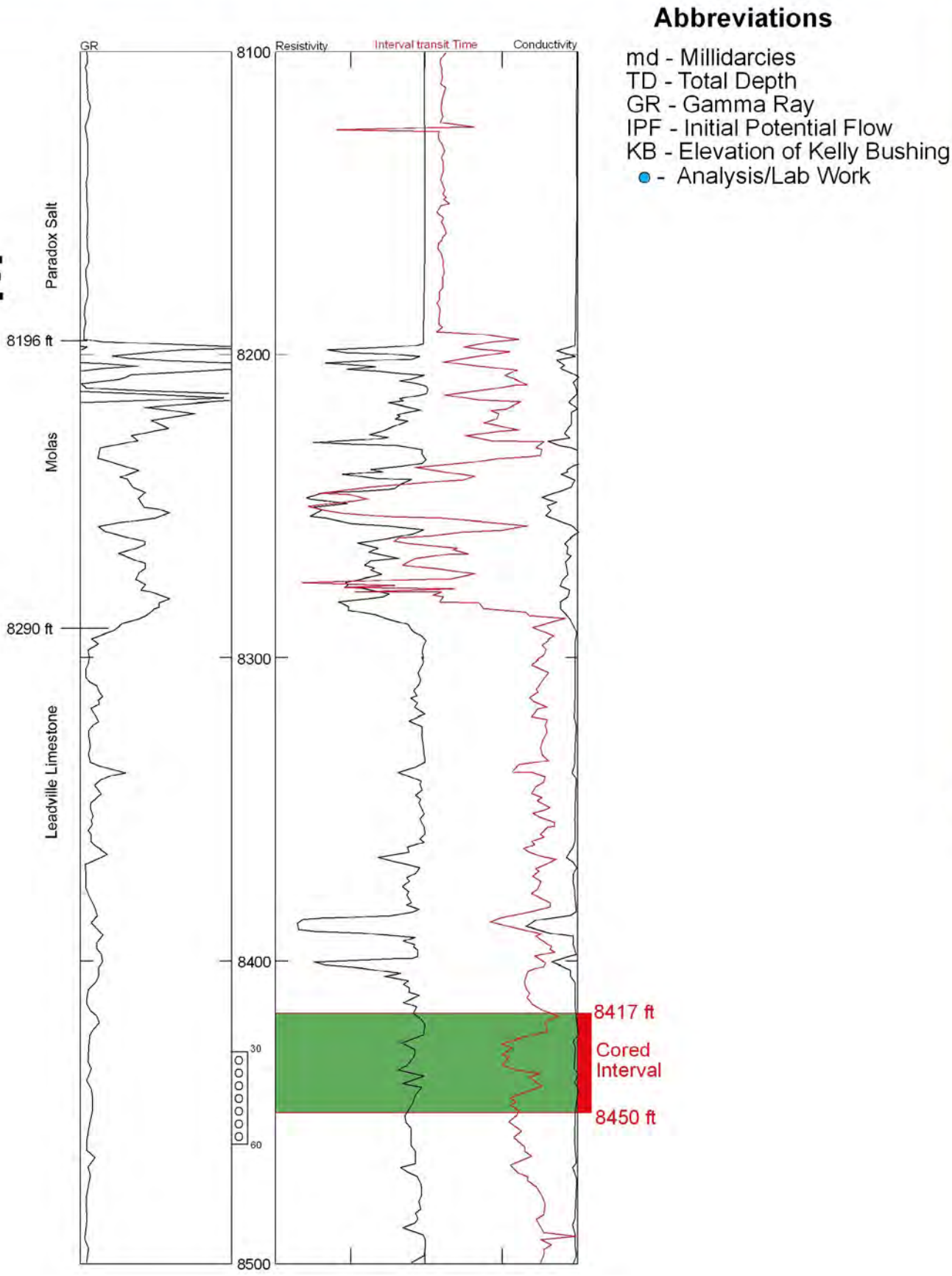
Explanation				
Lithologic Composition	Texture	Pore Types	Abundance	Physical Structures
<div>Limestone</div>	<div>Skeletal Grains</div>	<div>Mo Moldic</div>	<div>I Pervasive</div>	<div>Stylolites</div>
<div>Dolostone</div>	<div>Micrite</div>	<div>BC Intercrystal</div>	<div>Abundant</div>	<div>Fractures</div>
	<div>Peloid</div>	<div>Vug</div>	<div>Rare</div>	<div>Sulfide Minerals</div>
	<div>Ooid</div>	<div>Mi Microporosity</div>		<div>Slickensides</div>
		<div>Fr Fracture</div>		<div>Anhydrite, Mosaic</div>
				<div>Bitumen</div>
				<div>Clasts</div>
				<div>Calcareous</div>
				<div>Coated Grains</div>
				<div>Cherty</div>

Geophysical Logs						Core Plug Analysis						Conventional Core																						
Gamma Ray API Units		Perforated Interval	Depth (feet)	Interval Transit Time			Permeability (md)			Porosity (%)			SEM	Fluid Inclusions	Isotope	Epi-Flourescence	Catholuminescence	Thin Sections	Feet	Fabric					Pore Type	Physical Structures	Texture		Framework Constituents	Fractures	Cement	Color	Facies	Remarks
0	160			100	70	40	0	20	40	60	80	0	20	40	60	80					boundstone	grainstone	packstone	wackestone	mudstone									
			8420																															
			8430																															
			8440																															
			8450																															

Plate C.5

Lisbon Pure D-816
NESE Section 16, T30S, R24E
KB 6108 feet

TD 8666 feet
IPF: 1782 BPD, no gas, no water
Completed: 11-1-1962



Explanation									
Lithologic Composition		Texture		Pore Types		Abundance		Physical Structures	
<div></div> Limestone		<div>s</div> Skeletal Grains		Mo	Moldic	<div>↑</div>	Pervasive	<div> </div>	Stylolites
<div></div> Dolostone		<div>m</div> Micrite		BC	Intercrystal	<div>↑</div>	Abundant	<div>⚡</div>	Fractures
		<div>p</div> Peloid		Vug	Vug	<div>↑↓</div>	Rare	<div>s</div>	Sulfide Minerals
Framework Constituents				Mi	Microporosity			<div>⚡</div>	Slickensides
				Fr	Fracture			<div>⋈</div>	Anhydrite, Mosaic
		★ - Crinoids						<div>bit</div>	Bitumen
		Fos - Unidentified Fossils						<div>==</div>	Calcareous