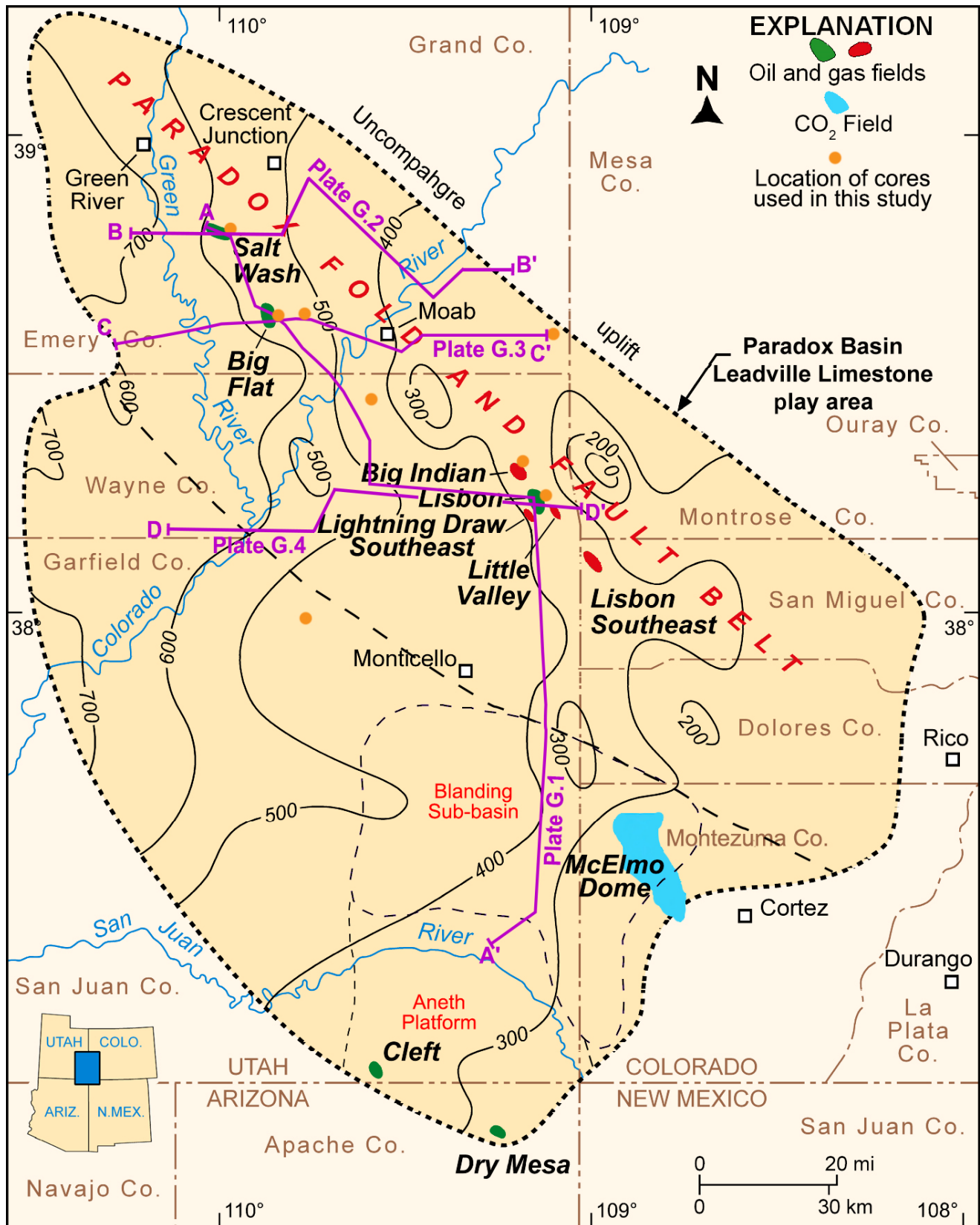


**APPENDIX G:**

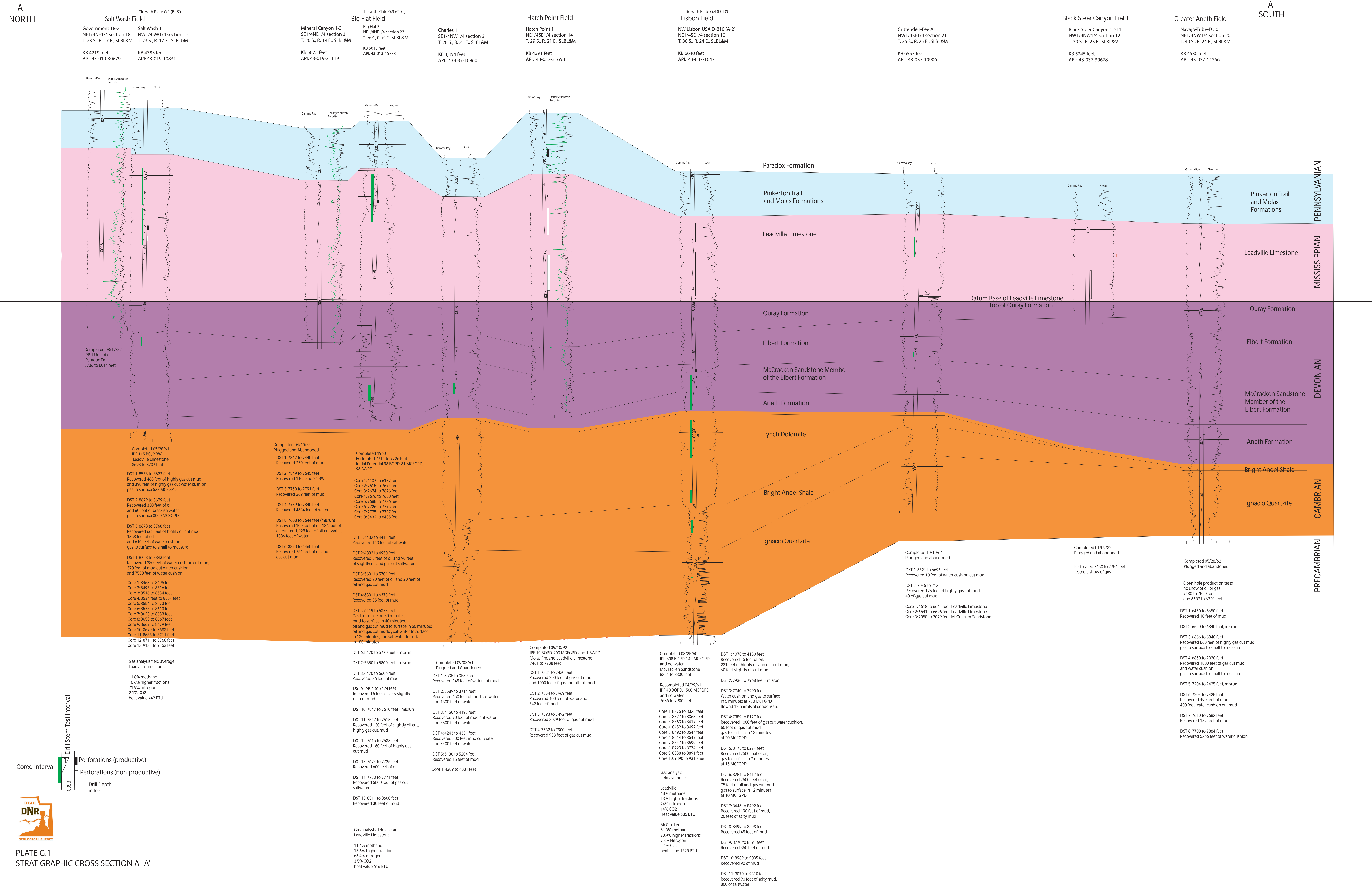
**REGIONAL STRATIGRAPHIC CROSS SECTIONS,**

**PARADOX BASIN, UTAH**



**Figure G.1.** Thickness of the Mississippian Leadville Limestone, Utah and Colorado; contour interval is 100 feet. Modified from Parker and Roberts (1963). Thicknesses are generalized, and many areas of local fault-related thinning are not displayed. Also shown are oil (green) and gas (red) fields that produce from the Leadville and location of cores from regional exploration wells and Leadville fields used in the study. Locations of stratigraphic cross sections (plates G.1 through G.4) in purple.







B  
WEST

B'  
EAST

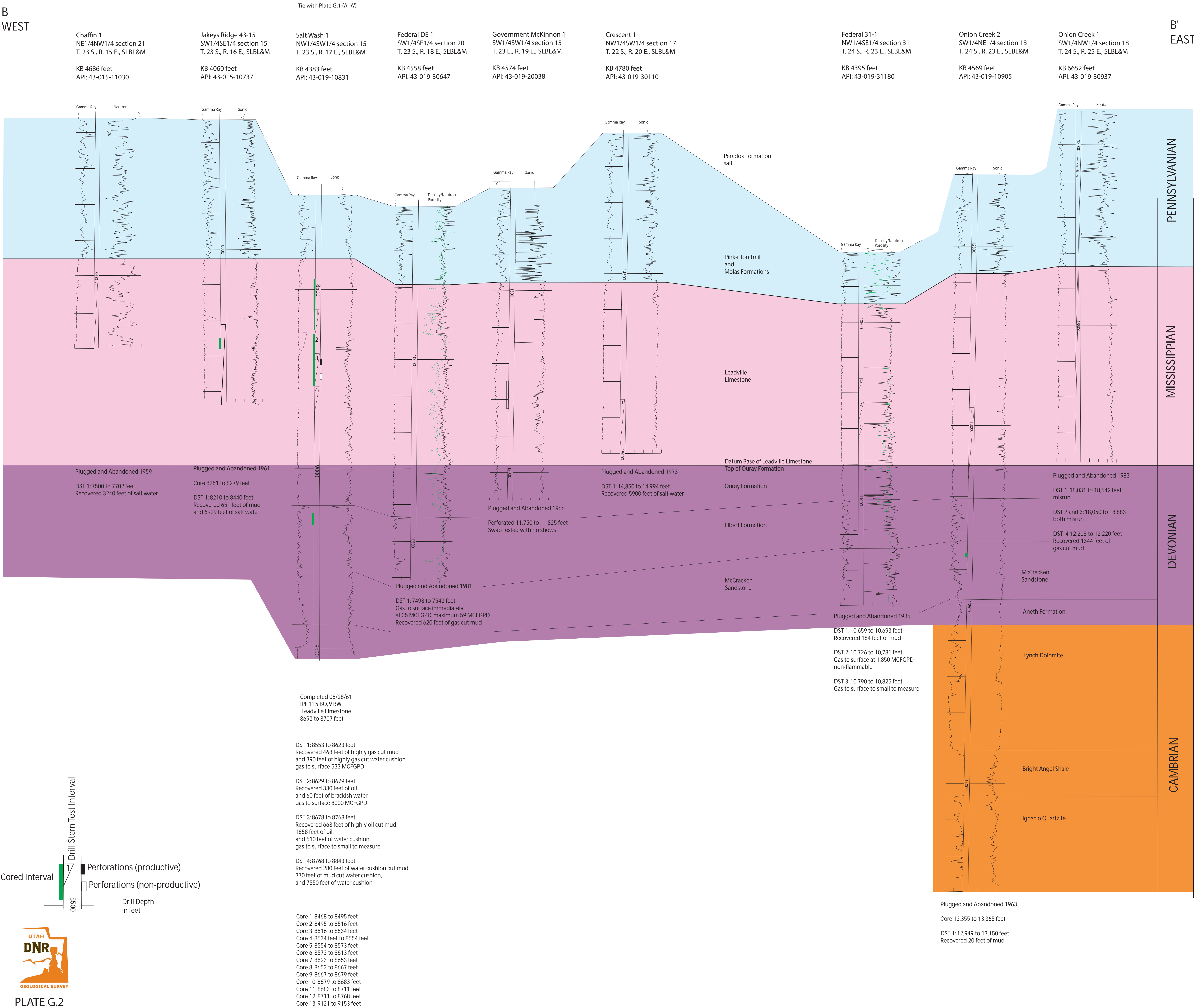


PLATE G.2  
STRATIGRAPHIC CROSS SECTION B-B'



C  
West

C'  
East

Tie with Plate G.1 (A--A')

North Spring Creek 1  
NW1/4NE1/4 section 21  
T. 26 S., R. 15 E., SLBL&M

Bowknot 14-5  
SW1/4SW1/4 section 5  
T. 26 S., R. 17 E., SLBL&M

Government Mineral Point 1  
NE1/4SE1/4 section 7  
T. 26 S., R. 18 E., SLBL&M

Big Flat 3  
NE1/4NE1/4 section 23  
T. 26 S., R. 19 E., SLBL&M

Skyline Federal 8-44  
SE1/4SE1/4 section 8 T.  
26 S., R. 20 E., SLBL&M

Long Canyon 1  
SE1/4NW1/4 section 9  
T. 26 S., R. 20 E., SLBL&M

Cities Service Oil Company Federal  
Weaver 1  
SW1/4NE1/4 section 28,  
T. 26 S., R. 22 E., SLBL&M

Burkholder 1-G-1  
SW1/4NE1/4 section 1,  
T. 26 S., R. 22 E., SLBL&M

Taylor Creek 2  
NW1/4SE1/4 section 12,  
T. 26 S., R. 25 E., SLBL&M

KB 5083 feet  
API: 43-015-30205

KB 5051 feet  
API: 43-015-11181

KB 5074 feet  
API: 43-019-11335

KB 6018 feet  
API: 43-013-15778

KB 6023 feet  
API: 43-019-30273

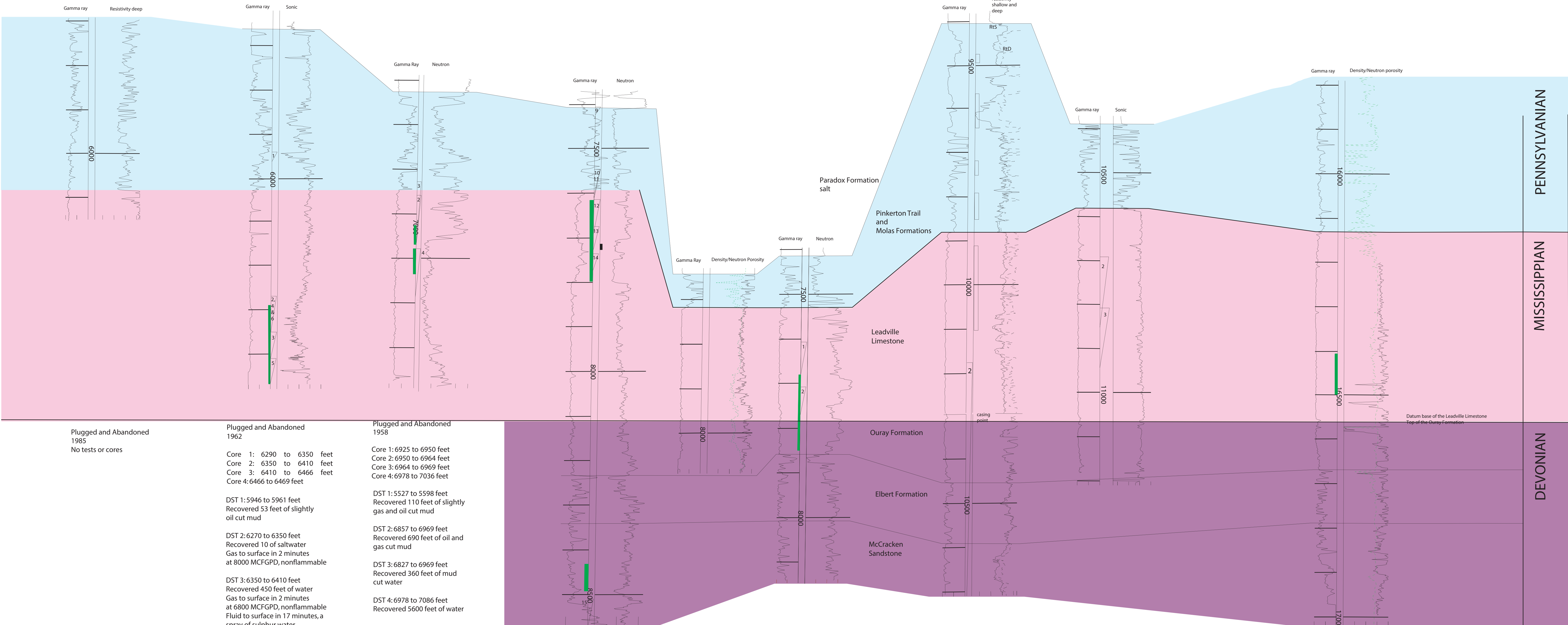
KB 5794 feet  
API: 43-019-15925

KB 4779 feet  
API: 43-019-30113

KB 5300 feet  
API: 43-019-30076

KB 8887 feet  
API: 43-019-31157

Deepened well originally  
drilled by  
Union Texas Petroleum  
Corporation



Plugged and Abandoned  
1985  
No tests or cores

Plugged and Abandoned  
1962  
Core 1: 6290 to 6350 feet  
Core 2: 6350 to 6410 feet  
Core 3: 6410 to 6466 feet  
Core 4: 6466 to 6469 feet

DST 1: 5946 to 5961 feet  
Recovered 53 feet of slightly  
oil cut mud

DST 2: 6270 to 6350 feet  
Recovered 10 of saltwater  
Gas to surface in 2 minutes  
at 8000 MCFGPD, nonflammable

DST 3: 6350 to 6410 feet  
Recovered 450 feet of water  
Gas to surface in 2 minutes  
at 6800 MCFGPD, nonflammable  
Fluid to surface in 17 minutes, a  
spray of sulphur water

DST 4: 6270 to 6350 feet  
Recovered 25 feet of slightly  
oil cut sulphur saltwater  
Gas to surface in 2 minutes  
at 8500 MCFGPD, nonflammable  
Fluid to surface in 9 minutes

DST 5: 6410 to 6466 feet  
Recovered 2340 feet of sulphur  
saltwater water  
Gas to surface in 4 minutes  
at 300 MCFGPD  
Fluid to surface in 35 minutes

Gas analysis from DST 3:  
12.6% methane  
3.3% higher fractions  
79% hydrogen  
2.7% CO<sub>2</sub>  
Heat value 230 BTU

DST 6: 6270 to 6350 feet  
Recovered 80 of sulphur saltwater  
Gas to surface in 2 minute  
at 800 MCFGPD, nonflammable

Plugged and Abandoned  
1958  
Core 1: 6925 to 6950 feet  
Core 2: 6950 to 6964 feet  
Core 3: 6964 to 6969 feet  
Core 4: 6978 to 7036 feet

DST 1: 5527 to 5598 feet  
Recovered 110 feet of slightly  
gas and oil cut mud

DST 2: 6857 to 6969 feet  
Recovered 690 feet of oil and  
gas cut mud

DST 3: 6827 to 6969 feet  
Recovered 360 feet of mud  
cut water

DST 4: 6978 to 7086 feet  
Recovered 5600 feet of water

Completed 1960  
Perforated 7714 to 7726 feet  
Initial Potential 98 BO/D, 81 MCFGPD,  
96 BWPD

Core 1: 6137 to 6187 feet  
Core 2: 7615 to 7674 feet  
Core 3: 7674 to 7676 feet  
Core 4: 7676 to 7688 feet  
Core 5: 7688 to 7726 feet  
Core 6: 7726 to 7775 feet  
Core 7: 7775 to 7797 feet  
Core 8: 8432 to 8485 feet

DST 1: 4432 to 4445 feet  
Recovered 110 feet of saltwater

DST 2: 4882 to 4950 feet  
Recovered 5 feet of oil and 90 feet of  
slightly oil and gas cut saltwater

DST 3: 5601 to 5701 feet  
Recovered 70 feet of oil and 20 feet of  
oil and gas cut mud

DST 4: 6301 to 6373 feet  
Recovered 35 feet of mud

DST 5: 6119 to 6373 feet  
Gas to surface on 30 minutes,  
mud to surface in 40 minutes,  
oil and gas cut mud to surface in 50 minutes,  
oil and gas cut muddy saltwater to surface in  
120 minutes, and saltwater to surface  
in 180 minutes

DST 6: 5470 to 5770 feet - misrun

DST 7: 5350 to 5800 feet - misrun

DST 8: 6470 to 6606 feet  
Recovered 86 feet of mud

DST 9: 7404 to 7424 feet  
Recovered 5 feet of very slightly  
gas cut mud

DST 10: 7547 to 7610 feet - misrun

DST 11: 7547 to 7615 feet  
Recovered 130 feet of slightly oil cut, highly  
gas cut, mud

DST 12: 7615 to 7688 feet  
Recovered 160 feet of highly gas  
cut mud

DST 13: 7674 to 7726 feet  
Recovered 600 feet of oil

DST 14: 7733 to 7774 feet  
Recovered 5500 feet of gas cut  
saltwater

DST 15: 8511 to 8600 feet  
Recovered 30 feet of mud

Plugged and Abandoned  
1976  
Perforated 7248 to 7276 feet

Perforated 7078 to 7088 feet

Perforated 6878 to 6889 feet  
Recovered 17 BO and 13 BW

Perforated 5960 to 5973 feet

Perforated 5798 to 5816 feet

Perforated 4108 to 4120 feet  
Recovered 17 BO and 13 BW

DST 1: 4050 to 4138 feet  
Recovered 270 feet of gas cut  
mud, water, and oil

DST 2: 7231 to 7281 feet  
Recovered 45 feet of gas cut  
mud

DST 3: 7920 to 7946 feet  
Recovered 4680 feet of water

Completed 1962  
Perforated 7050 to 7075 feet  
Initial Potential 660 BO/D

Core 1: 4524 to 4534 feet Core 2:  
4534 to 4585 feet Core 3:  
7680 to 7707 feet Core 4: 7707  
to 7766 feet Core 5: 7760 to  
7820 feet Core 6: 7820 to 7850  
feet

DST 1: 7606 to 7678 feet  
Gas to surface in 8 minutes at  
5000 MCFGPD  
Recovered 40 feet of slightly  
oil cut brackish water

Gas analysis from DST 1:  
4.7% methane  
1.9% higher fr actions  
90.6% hydrogen  
0.7% CO<sub>2</sub>  
Heat value 102 BTU

DST 2: 7706 to 7766 feet  
Recovered 112 feet of brackish  
water cut mud

DST 3: 7920 to 7946 feet  
Recovered 4680 feet of water

Union Texas Petroleum  
Corporation well  
Plugged and Abandoned 1973

DST 1: 7935 to 8113 feet  
Recovered 3 feet of mud

Cities Service Oil Company well  
Plugged and Abandoned  
after deepening in 1975

DST 2: 10,182 to 10,721 feet  
Recovered 12 barrels of mud and  
30 barrels of water

Perforated 9474 to 9490 feet  
Acidized and swab tested  
3 to 0 MCFGPD

Perforated 9576 to 9584 feet  
Acidized and swab tested  
30 to 2 MCFGPD

Perforated 9621 to 9631,  
9665 to 9668 feet  
Acidized and swab tested  
Gas to surface to small to measure

Perforated 9724 to 9750 Acidized  
and swab tested  
500 to 0 MCFGPD

Perforated 9852 to 98856,  
9838 to 9843, 9822 to 9829 and,  
9792 to 9797 feet  
Acidized and swab tested  
2000 to 33 MCFGPD

Perforated 9924 to 9931,  
9910 to 9917 feet  
Acidized and swab tested  
no show of oil or gas

Perforated 10,092 to 10,104,  
10,070 to 10,078  
Acidized and swab tested  
no show of oil or gas

Perforated 10,114 to 10,124  
Acidized and swab tested  
no show of oil or gas

Gas analysis field average  
Leadville Limestone

11.4% methane  
16.6% higher fractions  
66.4% nitrogen  
3.5% CO<sub>2</sub>  
heat value 616 BTU

Drill Stem Test Interval

Cored Interval

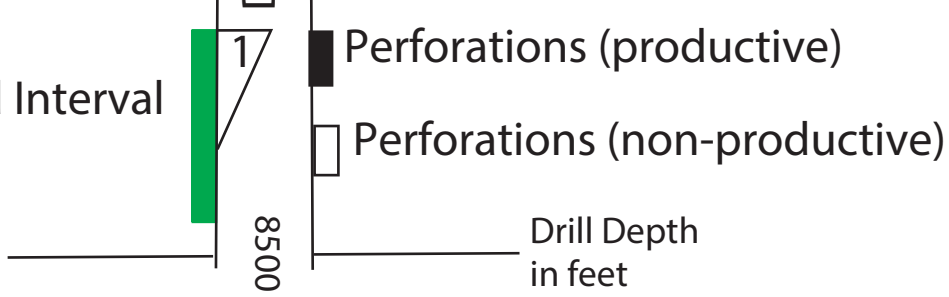


PLATE G.3  
STRATIGRAPHIC CROSS SECTION C--C'



D  
WEST

French Seep 1  
SE1/4NW1/4 section 27  
T. 30 S., R. 16 E., SLBL&M

KB 6470 feet  
API: 43-055-10942

USA-Lost Canyon 1  
SW1/4SE1/4 section 19  
T. 30 S., R. 20 E., SLBL&M

KB 5007 feet  
API: 43-037-11355

Gibson Dome State 1-2  
SW1/4NE1/4 section 2  
T. 30 S., R. 20 E., SLBL&M

KB 4875 feet  
API: 43-037-20322

Federal 1  
NE1/4SE1/4 section 13  
T. 30 S., R. 23 E., SLBL&M

KB 5928 feet  
API: 43-037-10047

Tie with Plate G.1 (A-A')

Lisbon Field

NW Lisbon USA D-810 (A-2)  
NE1/4SE1/4 section 10  
T. 30 S., R. 24 E., SLBL&M

KB 6640 feet  
API: 43-037-16471

Little Valley Federal 1  
SW1/4SE1/4 section 18  
T. 30 S., R. 25 E., SLBL&M

KB 6339 feet  
API: 43-037-30029

Spiller Canyon State 1  
section 16  
T. 30 S., R. 25 E., SLBL&M

KB 6859 feet  
API: 43-037-11356

Island Mesa 1  
NW1/4SW1/4 section 22  
T. 30 S., R. 26 E., SLBL&M

KB 6464 feet  
API: 43-037-11353

D'  
EAST

