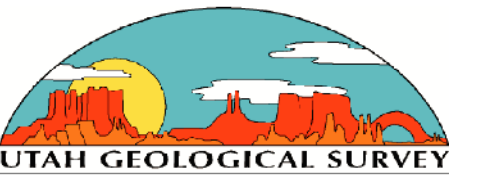


# OIL AND GAS FIELDS OF UTAH

Thomas C. Chidsey, Jr. and Sharon Wakefield  
Utah Geological Survey  
and  
Bradley G. Hill and Michael Hebertson  
Utah Division of Oil, Gas and Mining

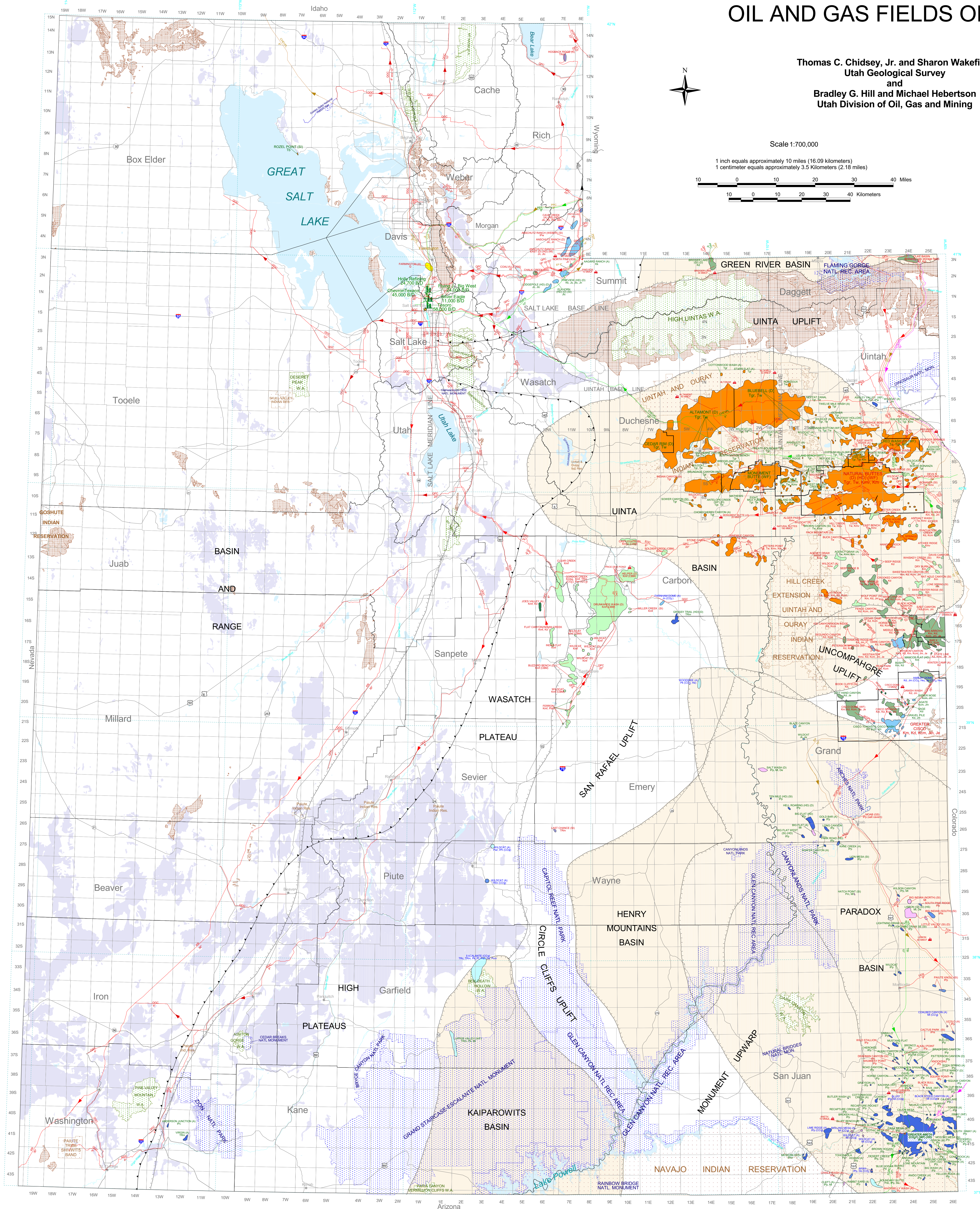
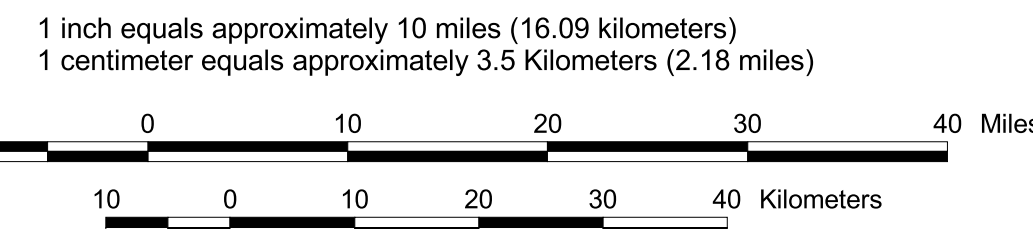
MAP 203 DM  
UTAH GEOLOGICAL SURVEY  
a division of  
Department of Natural Resources  
2004



ISBN 1-55791-709-4



Scale 1:700,000



## EXPLANATION

**RESERVOIR ROCKS**

Quaternary (Q)	Triassic (TR)
Tertiary (T)	Permian (P)
Upper Cretaceous (K)	Pennsylvanian (IPp)
Upper-Lower Cretaceous (K)	Mississippian (M)
Jurassic (J)	Devonian (D)

**SURFICIAL GEOLOGIC FEATURES**

- Leading edge of Sevier thrust belt
- Basin and uplift boundary (dash marks toward basin and away from uplift)
- Major sedimentary basin
- Undifferentiated Precambrian rocks exposed on the surface
- Tertiary/Quaternary volcanic rocks

**PIPELINES**

Notation includes operator (see Pipeline Operators below), pipe diameter in inches, and direction of flow. Adjacent diameter numbers indicate more than one pipeline of the same type. Pipeline routes are plotted as accurately as possible and are only accurate within the scale of this map. Most infield gathering and utility distribution systems are not shown.

- Crude oil
- Natural gas
- Carbon dioxide
- Hydrogen sulfide-bearing gas
- Natural gas processing plant or refinery products

**OTHER SYMBOLS AND DESIGNATIONS**

- State Capitol
- County Seat
- Longitude/Latitude
- Township/Range
- Lake, reservoir & intermittent water
- Major river
- National Park, Monument, Recreation Area
- Indian Reservation
- Wilderness Area

**RESERVOIR ROCKS (continued)**

**QUATERNARY**  
Q Undivided sediments

**TERTIARY**  
Tb Basalt  
Tu Uinta Formation  
Tgr Green River Formation  
Tw Wasatch Formation

**UPPER CRETACEOUS**  
Kmv Mesaverde Group  
Kcg Castlegate Sandstone  
Kmvb Mesaverde Group, Blackhawk Formation  
Km Mancos Shale  
Kmbg Mancos Shale, Blue Gate Shale Member  
Kmf Mancos Shale, Ferron Sandstone Member  
Kf Frontier Formation

**UPPER-LOWER CRETACEOUS**  
Kd Dakota Sandstone  
Kcm Cedar Mountain Formation  
Kk Kelvin Formation

**JURASSIC**  
Jm Morrison Formation  
Js Stump Formation  
Jc Curtis Formation  
Jt Entrada Sandstone  
Jtc Twin Creek Limestone  
Jn Nugget/Navajo Sandstone  
Jw Kayenta Formation  
Jw Wingate Sandstone

**TRIASSIC**  
TRc Chinle Formation  
TRm Moenkopi Formation  
TRd Dinwoody Formation

**PERMIAN**  
Pp Phosphoria Formation  
Ppc Park City Formation  
Pk Kabab Limestone  
Psb Black Box Dolomite  
Pwr White Rim Sandstone  
Po Organ Rock Formation  
Pcm Cedar Mesa Sandstone  
Pdc DeChelly Sandstone  
Pt Toroweap Formation

**PENNSYLVANIAN**  
IPw Weber Sandstone  
IPH Hermosa Formation  
IPHt Horsaker Trail Formation  
IPp Paradox Formation  
IPm Moles Formation  
IPC Callville Limestone

**MISSISSIPPIAN**  
Ml Leadville Limestone  
Mm Madison Group  
Mr Redwall Limestone

**DEVONIAN**  
Dc Elbert Formation  
Do Ouray Formation

**REFINERIES AND PLANTS**

Oil refinery. Notation includes operator and capacity in barrels of oil per day (B/D). Locations are approximate.

Natural gas processing plant. Notation includes operator and capacity (where data are available) in millions of cubic feet (MMCF) per day. Locations are approximate.

**BASE MAP COVERAGES AND SOURCE DATA**

County boundaries, city locations, federal boundaries, Public Land Survey System (PLSS), highways and roads, landownership from Utah Automated Geographic Reference Center

**COORDINATE SYSTEM:**  
Transverse Mercator  
False Easting: 500000.000000  
False Northing: 0.000000  
Central Meridian: -111.000000  
Scale Factor: 0.999600  
Latitude Of Origin: 0.000000  
Geographic Coordinate Systems North American 1983  
Datum: D North American 1983  
Prime Meridian: 0

**FIELD DESIGNATIONS**

(A) - Abandoned field	(He) - Helium reservoir
(CBM) - Coalbed methane	(HD) - Horizontal drilling project
(CO2) - Carbon dioxide reservoir	(HS) - Hydrogen sulfide
(CO2F) - CO2 flood project	(N) - Nitrogen injection
(D) - Produced water disposal project	(SI) - Shut-in field
(G) - Gas injection	(WF) - Waterflood project
(GS) - Gas storage	

Note: These designations appear after field name, reservoir name, or reservoir.

**PIPELINE OPERATORS**

- ARME - Anadarko Rocky Mountain Energy
- BBC - Bill Barrett Corp.
- CHEVPL - Chevron Pipeline Company
- CIC - Colorado Interstate Gas Company
- CPC - ConocoPhillips Co.
- EOC - Evergreen Operating Corp.
- EP - Enterprise Products Partners LP
- EM - ExxonMobil
- FCPC - Four Corners Pipeline Company
- IR - Inland Resources, Inc.
- KR - Kern River Gas Transmission Company
- MESA - MESA, Inc.
- PEP - Pacific Energy Partners LP
- PPC - Pioneer Pipeline Company
- QGC - Questar Gas Company
- QPC - Questar Pipeline Company
- RMP - Rocky Mountain Pipeline Systems LLC
- TBI - Tom Brown, Inc.
- TCP - TransColorado Pipeline Gathering Company
- TXNM - Texas New Mexico Pipeline Company
- UGS - Utah Gas Services Company
- UTNJNR - Ute Tribe/New Jersey Natural Resources
- WGPLNW - Williams Gas Pipeline - Northwest
- WGR - Western Gas Resources, Inc.

**REFERENCES**

- Bon, R.L., 1999. Petroleum geology of the Harley Dome field, Grand County, Utah: Utah Geological Survey Oil and Gas Field Studies 21, 2 plates.
- Chidsey, T.C., Jr., and Anderson, P.B., 1994. Oil and gas pipeline map of Utah: Utah Geological Survey Public Information Series 22, scale 1:1,000,000.
- DeBruin, R.H., 2002. Oil and gas map of Wyoming: Wyoming State Geological Survey Map Series 55, scale 1:500,000.
- Fassett, J.E., editor, 1978. Oil and gas fields of the Four Corners area: Four Corners Geological Society, v. 2, p. 169-724.
- 1963. Oil and gas fields of the Four Corners area: Four Corners Geological Society, v. 3, p. 1061-1140.
- Gurgel, K.D., 1983. Energy resources map of Utah: Utah Geological and Mineral Survey Map 68, scale 1:500,000.
- Hill, B.G., and Bereskin, S.R., editors, 1993. Oil and gas fields of Utah: Utah Geological Association Publication 22, non-paginated.
- 1996. Oil and gas fields of Utah: Utah Geological Association Publication 22 (Addendum), non-paginated.
- Hintze, L.F., Willis, G.C., Laes, D.Y.M., Sprinkel, D.A., and Brown, K.D., 2000. Digital geologic map of Utah: Utah Geological Survey Map 179DM, CD-ROM.
- Hjellming, C.A., editor, 1993. Atlas of major Rocky Mountain gas reservoirs: New Mexico Bureau of Mines and Mineral Resources, 206 p., 10 plates.
- Morgan, C.D., 1999. Petroleum geology of the Cisco Dome area, Grand County, Utah: Utah Geological Survey Oil and Gas Field Studies 19, 4 plates.
- 1999. Gas fields of the PR Springs area, Grand County, Utah: Utah Geological Survey Oil and Gas Field Studies 20, 2 plates.
- 1999. Petroleum geology of the Cisco Townsite and Cisco Wash areas, Grand County, Utah: Utah Geological Survey Oil and Gas Field Studies 22, 2 plates.
- 2001. Petroleum geology of the Agate, Danish Wash, Sage, and Sieber Nose reservoirs in the Greater Cisco field, Grand County, Utah: Utah Geological Survey Oil and Gas Field Studies 23, 2 plates.
- Sprinkel, D.A., 1999. Digital geologic resources atlas of Utah: Utah Geological Survey Bulletin 129DF, CD-ROM.
- Stewart, W.W., 1979. Clay Basin, Daggett County, Utah: Wyoming Geological Association, Oil and Gas Fields Symposium, Greater Green River Basin, p. 100-101.
- Utah Division of Oil, Gas and Mining, 2003. Oil and gas production report, October 2003: non-paginated.
- 2004. Well completion and field records: Utah Division of Oil, Gas and Mining files.
- Utah Geological Survey, 2001. Utah! 100 years of exploration...and still the place to find oil and gas: Utah Geological Survey Public Information Series 71, 20 p.
- Westerdale, B., 1979. Bridger Lake, Summit County, Utah: Wyoming Geological Association, Oil and Gas Fields Symposium, Greater Green River Basin, p. 72-73.
- Wray, L.L., Allison, A.D., Hemborg, H.T., and Brchan, C., 2002. Oil and gas fields map of Colorado: Colorado Geological Survey Map Series 33, scale 1:500,000.

**ACKNOWLEDGMENTS**

Funding for this map was provided, in part, by the U.S. Department of Energy through the Preferred Upstream Management Program (PUMP II), National Petroleum Technology Office, Tulsa, Oklahoma, contract number DE-FC26-02NT15133.

We thank the various oil, gas, and pipeline companies operating in Utah for their assistance in compiling pipeline data on this map. John Hanson, formerly with the Utah Geological Survey (UGS), also assisted with the pipeline portion of the map. The Utah Energy Office and Utah Division of Oil, Gas and Mining, provided petroleum infrastructure data. We thank David Tabet and Mike Hyland of the UGS for their careful reviews.

**DISCLAIMER**

Although this product represents the work of professional scientists, the Utah Department of Natural Resources, Utah Geological Survey, makes no warranty, expressed or implied, regarding its suitability for a particular use. The Utah Department of Natural Resources, Utah Geological Survey, shall not be liable under any circumstances for any direct, indirect, special, incidental, or consequential damages with respect to claims by users of this product.