

Hintze, Davis

GEOLOGIC MAP OF DELTA QUADRANGLE, LYNNDYL QUADRANGLE, MILLARD, JUAB, SANPETE, AND SEVIER COUNTIES, UTAH

UGS Map 184

ISBN 1-55791-583-0



GEOLOGIC MAP OF THE DELTA 30' x 60'  
QUADRANGLE AND PARTS OF THE LYNNDYL  
30' x 60' QUADRANGLE, NORTHEAST  
MILLARD COUNTY AND PARTS OF JUAB,  
SANPETE, AND SEVIER COUNTIES, UTAH

by  
*Lehi F. Hintze and Fitzhugh D. Davis*

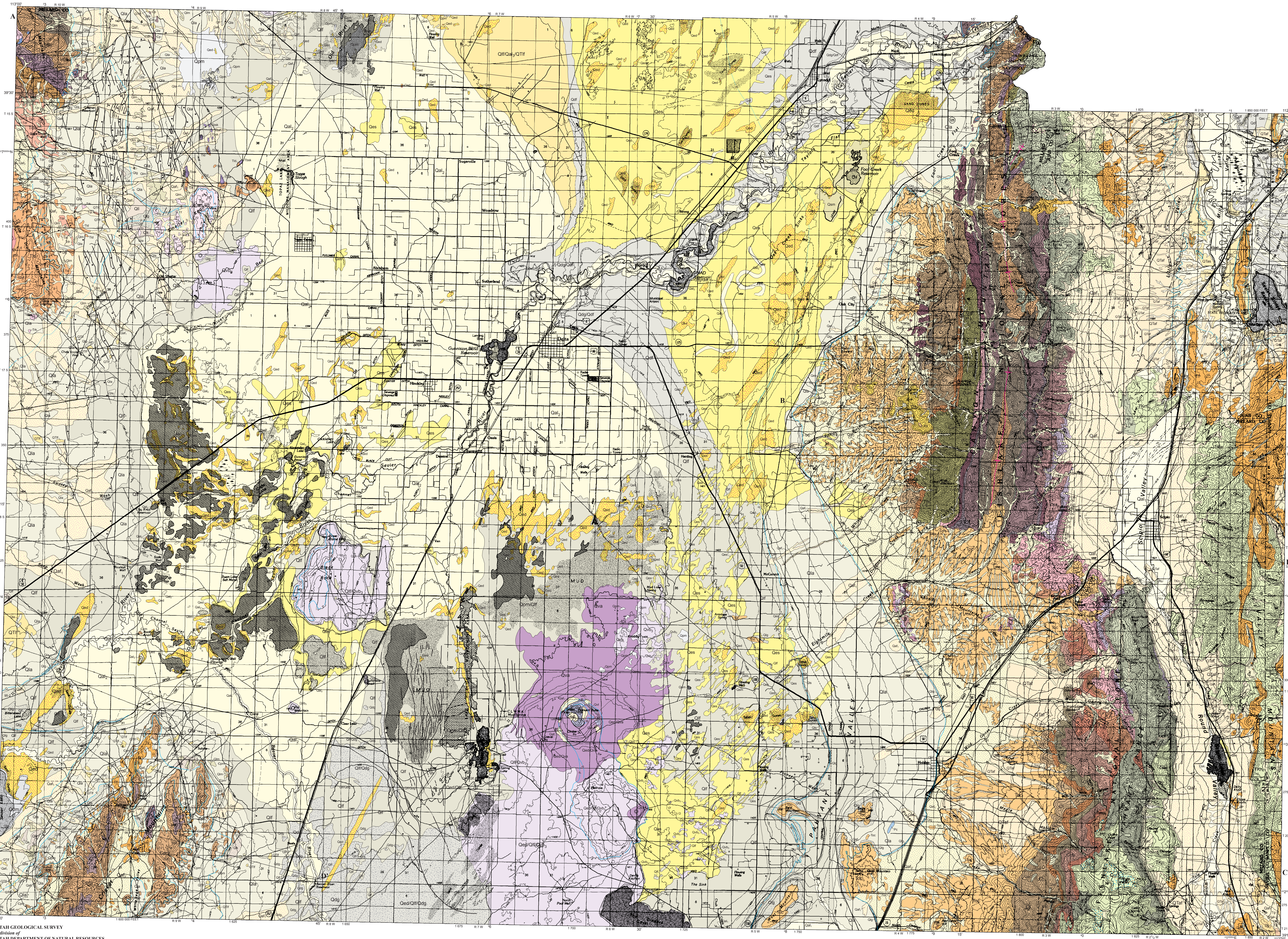


2002

MAP 184  
UTAH GEOLOGICAL SURVEY  
*a division of*  
Utah Department of Natural Resources







UTAH GEOLOGICAL SURVEY  
a division of  
UTAH DEPARTMENT OF NATURAL RESOURCES  
in cooperation with  
U.S. GEOLOGICAL SURVEY  
State Map Agreement No. 98HQAG2067  
Projection: UTM Zone 12  
Units: Meters  
Datum: NAD 1983  
Spheroid: Clarke 1866

**GEOLOGIC MAP OF THE DELTA 30' x 60' QUADRANGLE AND PART OF THE LYNNDYL 30' x 60' QUADRANGLE,  
NORTHEAST MILLARD COUNTY AND PARTS OF JUAB, SANPETE, AND SEVIER COUNTIES, UTAH**

by  
**Lehi F. Hintze and Fitzhugh D. Davis**  
2002

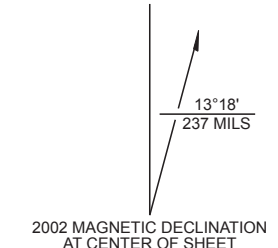
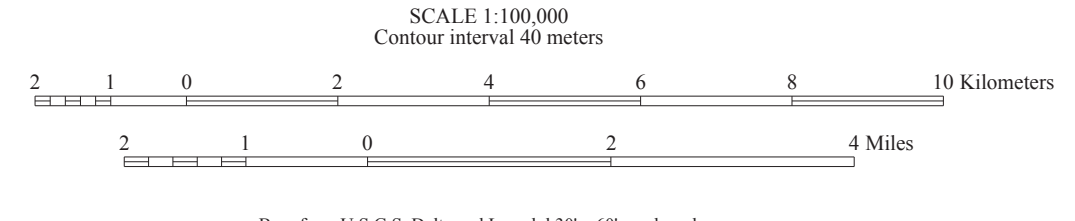
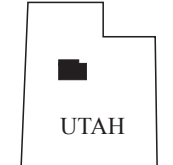


Plate 1 of 2  
Utah Geological Survey Map 184  
Geologic map of the Delta 30' x 60' quadrangle,  
and part of Lynndyl 30' x 60' quadrangle.  
GIS compilations: Denise Y.M. Lae, Ann Tilla,  
Kent D. Brown, and Brian Marjolek  
Project Manager: Jon King  
The views and conclusions contained in this document  
are those of the authors and should not be interpreted  
as necessarily representing the official policies, either  
express or implied, of the U.S. Government.



