

Structure Contour of the Top of the Salt in the Paradox Formation and Areas of Low Topographic Slope Angle in the Paradox Basin

by
Sonja Heuscher

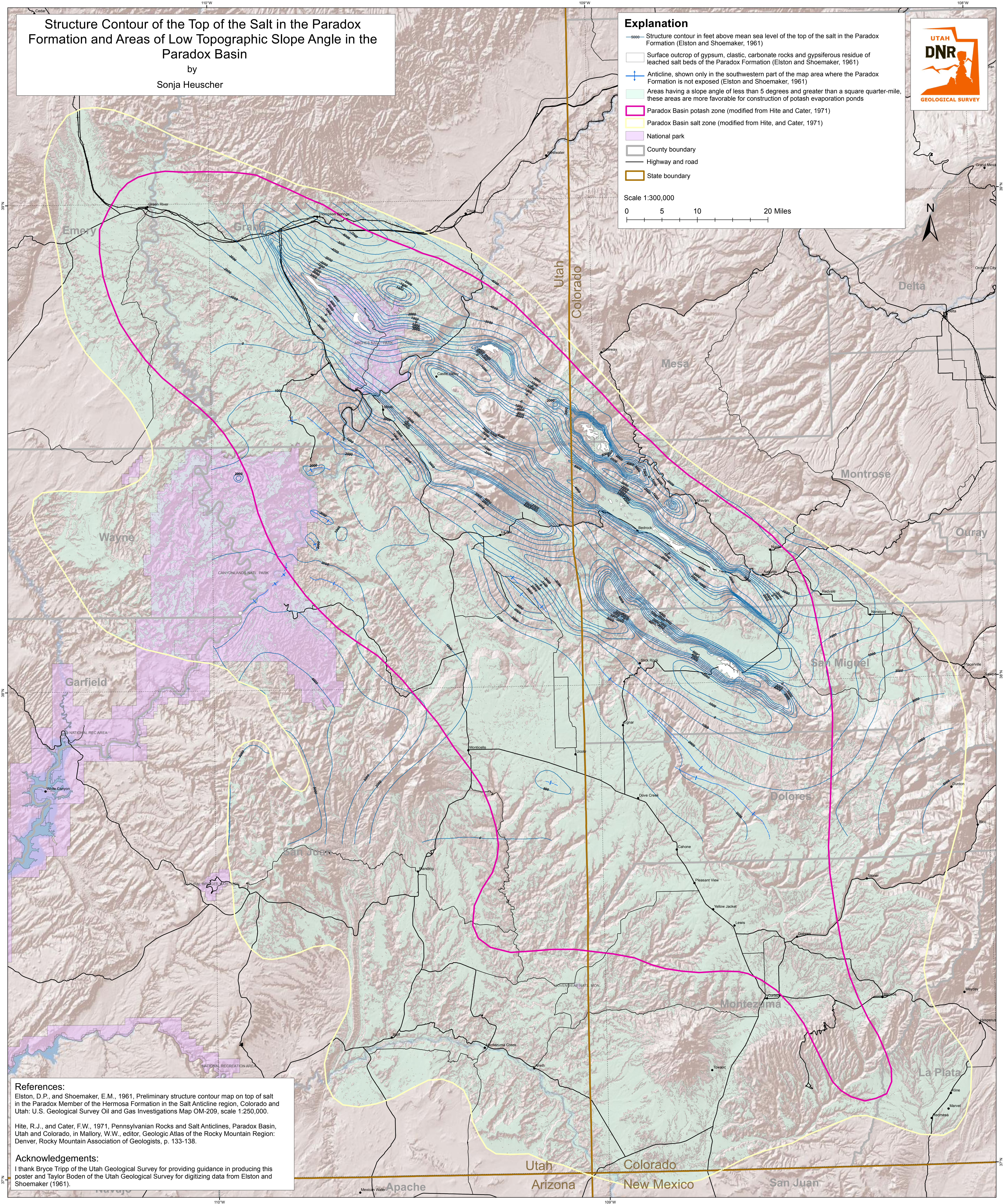


Explanation

- 5000— Structure contour in feet above mean sea level of the top of the salt in the Paradox Formation (Elston and Shoemaker, 1961)
- Surface outcrop of gypsum, clastic, carbonate rocks and gypsiferous residue of leached salt beds of the Paradox Formation (Elston and Shoemaker, 1961)
- + Anticline, shown only in the southwestern part of the map area where the Paradox Formation is not exposed (Elston and Shoemaker, 1961)
- Areas having a slope angle of less than 5 degrees and greater than a square quarter-mile, these areas are more favorable for construction of potash evaporation ponds
- ▭ Paradox Basin potash zone (modified from Hite and Cater, 1971)
- ▭ Paradox Basin salt zone (modified from Hite, and Cater, 1971)
- ▭ National park
- ▭ County boundary
- Highway and road
- ▭ State boundary

Scale 1:300,000

0 5 10 20 Miles



References:
Elston, D.P., and Shoemaker, E.M., 1961, Preliminary structure contour map on top of salt in the Paradox Member of the Hermosa Formation in the Salt Anticline region, Colorado and Utah: U.S. Geological Survey Oil and Gas Investigations Map OM-209, scale 1:250,000.

Hite, R.J., and Cater, F.W., 1971, Pennsylvanian Rocks and Salt Anticlines, Paradox Basin, Utah and Colorado, in Mallory, W.W., editor, Geologic Atlas of the Rocky Mountain Region: Denver, Rocky Mountain Association of Geologists, p. 133-138.

Acknowledgements:
I thank Bryce Tripp of the Utah Geological Survey for providing guidance in producing this poster and Taylor Boden of the Utah Geological Survey for digitizing data from Elston and Shoemaker (1961).