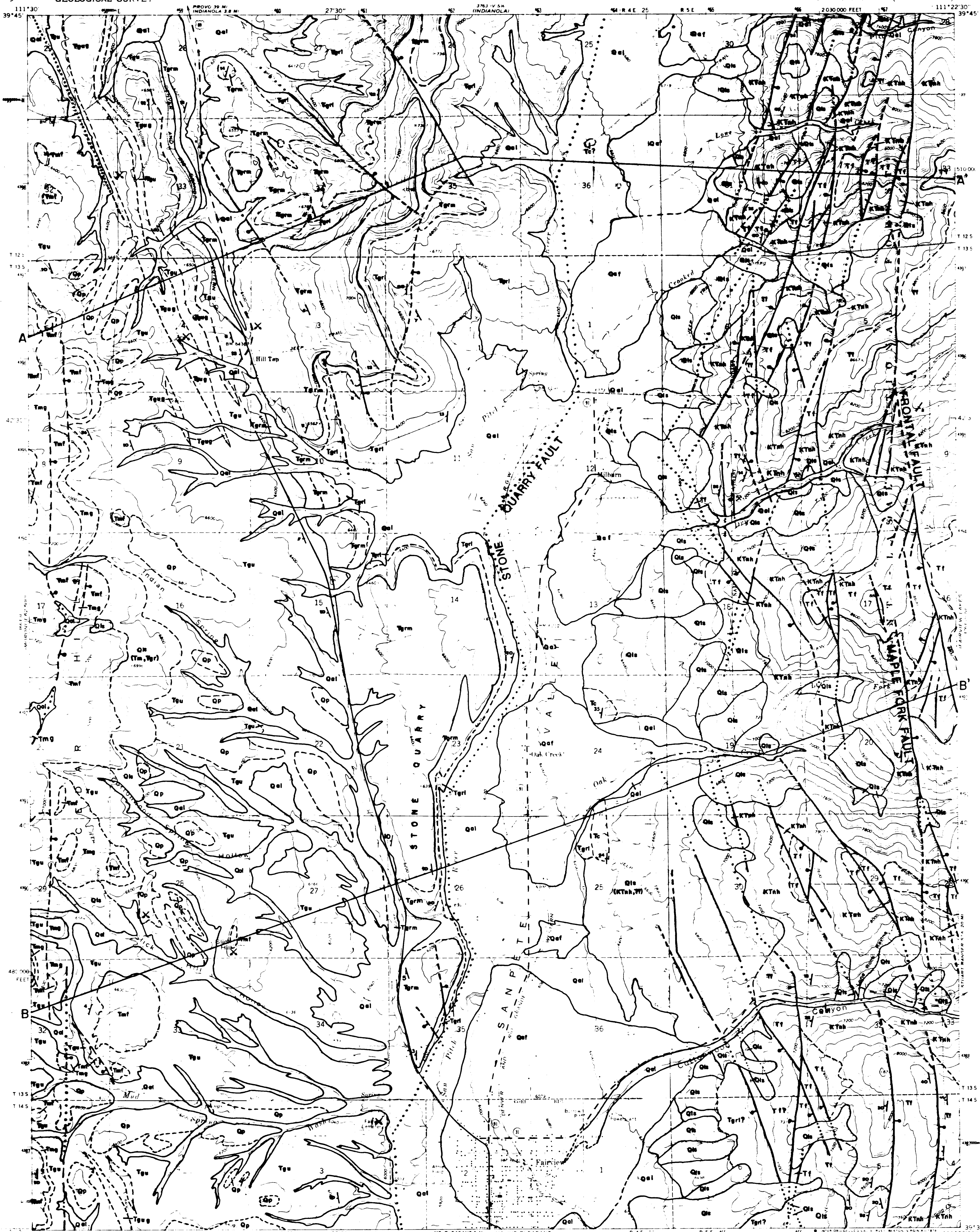


INTERIM GEOLOGIC MAP OF THE FAIRVIEW QUADRANGLE SANPETE COUNTY, UTAH

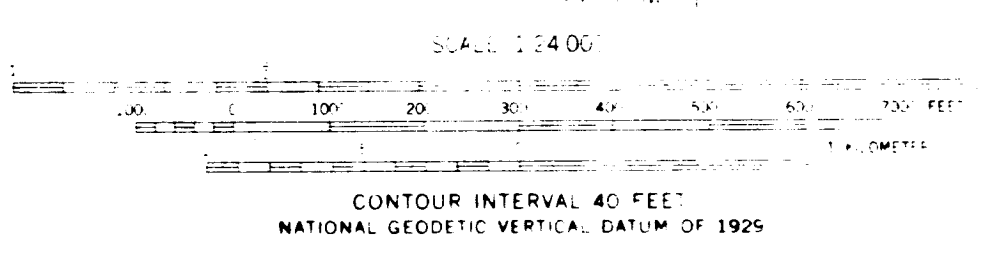
By Nelson R. Eason
U.S. Geological Survey Open-File Report 300 September 1993

UNITED STATES
DEPARTMENT OF THE INTERIOR
GEOLOGICAL SURVEY

FAIRVIEW QUADRANGLE
UTAH—SANPETE CO.
7.5 MINUTE SERIES (TOPOGRAPHIC)



Map compiled and edited by the Geological Survey, U.S. Geological Survey.
Topographic by photogrammetric method from aerial photographs taken 1975. Field checked 1993.
Elevation based on 1987 North American datum.
Map projection is based on U.S. coordinate system, central zone.
Contour interval is 40 feet. Transverse Mercator grid ticks are 12.5 meters.
Fixed dashed lines are selected for the line.
There may be private inholdings within the boundaries of the National or State reservation shown on this map.
Map photocopied 1975.
No major culture or drainage changes observed.



ROAD CLASSIFICATION
 Heavy Duty ——— Light Duty ———
 Metropolitan ——— Unimproved ———
 U.S. Route ——— State Route ———

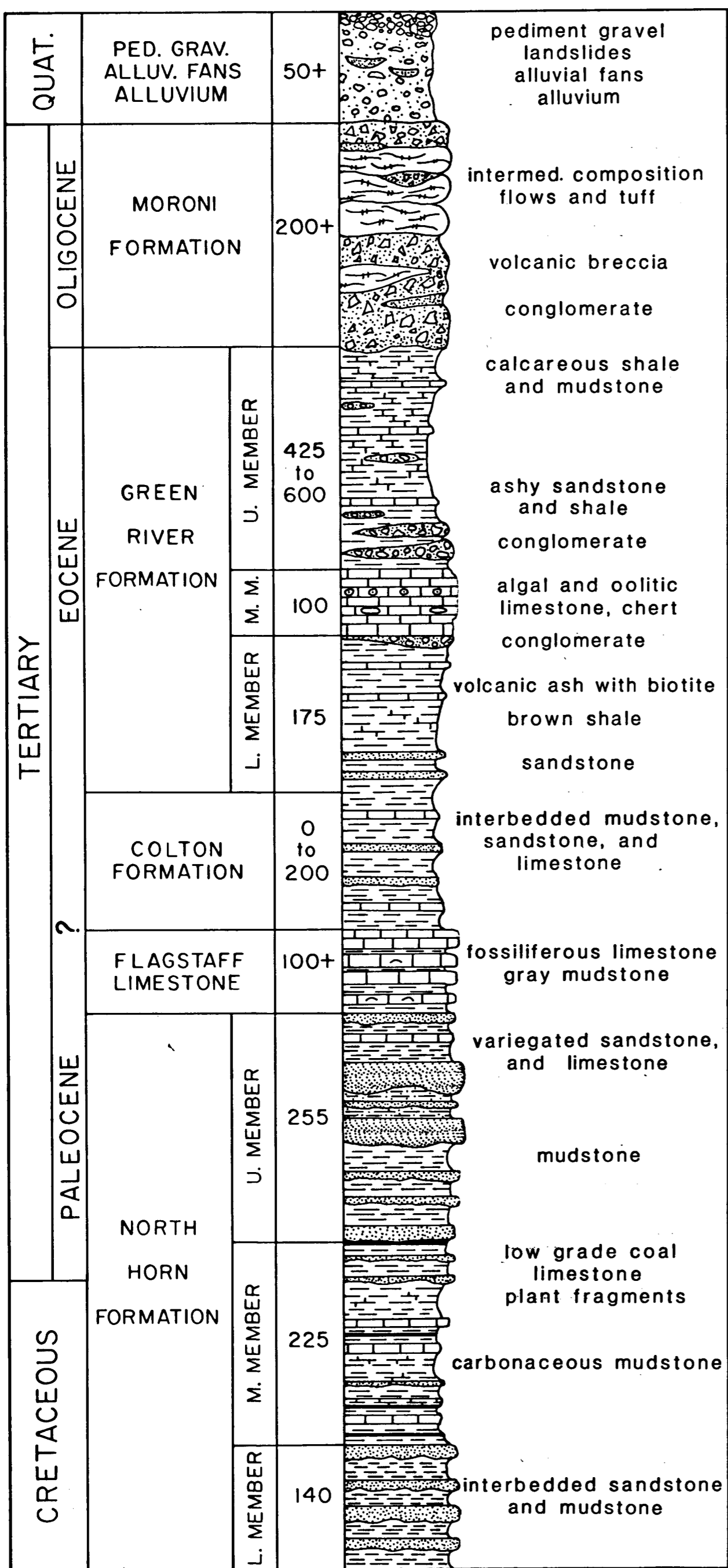
THIS MAP COMPLIES WITH NATIONAL MAP ACCURACY STANDARDS
 FOR SALE BY U.S. GEOLOGICAL SURVEY, DENVER, COLORADO 80225, OR RESTON, VIRGINIA 22092
 A FOLDER DESCRIBING TOPOGRAPHIC MAPS AND SYMBOLS IS AVAILABLE ON REQUEST

FAIRVIEW, UTAH
 N 39° 5' W 111° 22' 30"
 1967
 PHOTOINSPECTED 1975
 AMS 3763 III NW—SERIES V89

INTERIM GEOLOGIC MAP OF THE
FAIRVIEW QUADRANGLE, SANPETE COUNTY, UTAH

by Nolan R. Jensen
Utah Geological Survey Open-File Report 300 September 1993

Reference: Jensen, N. R., 1988, Geology of the Fairview 7½' quadrangle, Sanpete County, Utah: Brigham Young University Geology Studies. v. 35, p. 101-121.
Thesis Chairman: J. Keith Rigby.
Field work during 1985.



EXPLANATION

