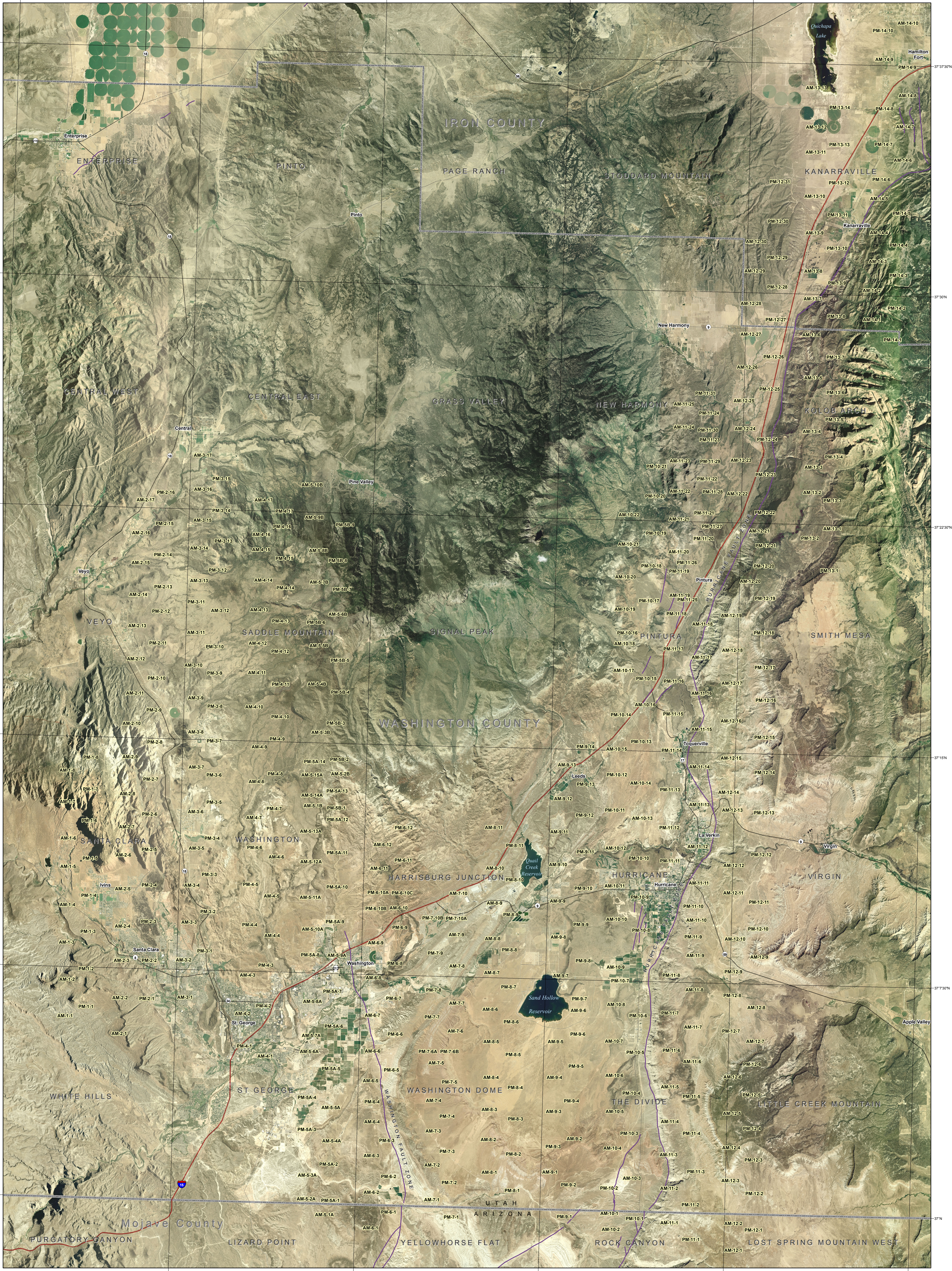


See Plate 1A for Continuation



Base from 2000 U.S. Department of Agriculture National Agriculture Imagery Program (NAIP) Data. Quaternary fault traces from 2000 U.S. Geological Survey Fault and Fold Database of the United States. Photo center points and base map in NAD 1983.

This open-file release makes information available to the public that may not conform to USGS technical, editorial, or policy standards; this should be considered by an individual or group planning to take action based on the contents of this report.

The Utah Department of Natural Resources, Utah Geological Survey, makes no warranty, expressed or implied, regarding its suitability for a particular use. The Utah Department of Natural Resources, Utah Geological Survey, shall not be liable under any circumstances for any direct, indirect, special, incidental, or consequential damages with respect to claims by users of this product.

Because the aerial photograph frame center points are estimated, some undetermined positional error exists between the frame center points and the actual ground locations.

Utah Geological Survey
1694 West North Temple, Suite 3110
P.O. Box 146100, Salt Lake City, UT 84114-6100
Phone: 801-537-3300 Fax: 801-537-3400
geology.utah.gov

SCALE 1:100,000



Index Map of Aerial Photography
Compilation of 1982-83 Seismic Safety Investigation Reports of Eight SCS Dams in Southern Utah
(Hurricane and Washington Fault Zones) and Low-Sun-Angle Aerial Photography
Washington and Iron Counties, Utah, and Mohave County, Arizona

Steve D. Bowman, Brennan W. Young, and Corey D. Unger
2011

Explanation

- Approximate Frame Center Point
- Quaternary Fault
- U.S. Geological Survey 1:24,000 Scale Quadrangle
- County Boundary
- State Boundary
- Interstate Highway
- Divided Highway
- State Highway
- Other Road

APPROXIMATE MEAN
DECLINATION, 2011

