

RECENTLY ACTIVE
STONE QUARRIES OF UTAH

Quartzite Quarries

Loc. No.	Quarry Name Operator	Stone Produced Quarry Location (1/4 S., T., R.)
1	Starlight Stone State Stone	Veneer; gold, white, and charcoal. NE,21,14N,17W.
2	Holt Basin East State Stone	Veneer; grey with bronze and gold banding. SE,22,14N,17W.
3	American Stone N. American Stone	Veneer; white, gold, some red to black. NE,28,14N,17W.
4	Ridge Crest D. and K. Nelson	Veneer and flagstone; light and dark gold. NE,28,14N,17W.
5	American Stone S. American Stone	Veneer; white, gold, and some reddish-brown. SE,33,14N,17W.
6	South Holt Basin State Stone	Veneer and flagstone; gold and light grey. SE,34,14N,17W.
7	Lower Basin Creek D. and K. Nelson	Veneer and flagstone; light to medium grey. SE,02,13N,17W.
8	Upper Narrows Utah Building Stone	Veneer, flagstone, and ashlar; white. SE, 08,14N,16W.
9	Lynn Creek Utah Building Stone	Veneer and flagstone, orangish-light grey. NW,29,14N,16W.
10	Pine Spring Stone Art Company	Veneer, flagstone, ashlar. White, charcoal grey. SW,01,13N,16W.
11	Dove Creek Utah Building Stone	Veneer and flagstone; white, grey. NW,14,13N,16W.
12	Gold Sheen Quartzite Utah Building Stone	Veneer and flagstone; white. NE,23,13N,16W.
13	Clarks Basin Creek SW Imperial Stone	Veneer, flagstone, and ashlar; white, grey. SE,23,13N,16W.
14	Black Hills Quartzite Imperial Stone	Veneer; white, minor brown to purple. NE,23,13N,15W.
15	Turquoise Northern Stone	Veneer, flagstone, and ashlar; bluish-green. NW,18,13N,13W.
16	Upper Fisher Creek Utah Building Stone	Veneer, flagstone, and ashlar; white to tan. NW,08,13N,13W.
17	Lower Fisher Creek Utah Building Stone	Ashlar, flagstone, and veneer; green, white. SE,08,13N,13W.
18	Left Fork Dunn Cyn. American Stone	Ashlar, flagstone, and veneer; light green. SE,09,13N,13W.
19	Right Fork Dunn Cyn. American Stone	Ashlar, flagstone, and veneer; light green. SW,10,13N,13W.
20	Lazy Green Max Cooper	Veneer, flagstone; light green. SE,02,10N,16W.
21	Rosebud Ridge Utah Building Stone	Veneer and flagstone; medium grey. SW,11,10N,16W.

Sandstone Quarries

1	Peoa Blonde American Stone	Veneer, flagstone, and ashlar; tan. SE,19,1S,5E.
---	--------------------------------------	--

2	Browns Canyon Paul Trunnell	Veneer, flagstone, and ashlar; tan. 20,1S,5E.
3	Heber City American Stone	Veneer, flagstone, and ashlar; reddish-orange. SW,06,4S,6E.
4	Torrey Red-State State Stone	Blocks for sawing; reddish-brown. NW,13,29S,4E.
5	Torrey Red-Hansen Hansen Stone	Blocks for sawing; reddish-brown. NW,13,29S,4E.
6	Torrey Tan-Hansen Hansen Stone	Blocks for sawing; buff. NW,24,29S,4E.
7	Torrey Tan-State State Stone	Blocks for sawing; buff. NW,20,29S,5E.

Limestone Quarries

1	Aragonite Onyx American Stone	Rubble and dimension stone; white and cream. NE,23,1S,10W.
2	Nephi Honey Onyx Feller Holding	Rubble and dimension stone; white and light orange. NE,16,13S,1W.
3	Manti Oolite State Stone	Dimension stone and ashlar; white to buff, oolitic. SW,06,18S,3E.
4	Rock Corral Tufa Bob Robison	Rubble and dimension stone; buff to brown. SW,35,22S,6W.
5	Rock Farm Travertine Mission Rock	Rubble and dimension stone; salmon to brown. 16,23S,17E.

Lava, Rhyolite, and Granite Quarries

1	The Cinders Diversified Mktg.	Lava rubble stone; reddish-brown to dark brown. SW,23,21S,6W.
2	Vejo Lava Lava Products	Lava rubble stone; reddish-brown to brown. SW,32,39S,16W.
3	Rainbow Rock Feller Holding	Rhyolite rubble stone; banded, buff, orange, blue. West of Veyo.
4	Picture Stone Diversified Mktg.	Rhyolite veneer; flaggy, banded, white, purple, tan. Tonopah, NV.
5	Granitic Gneiss American Stone	Granitic gneiss veneer; flaggy, dark grey. 18?,14N,17W.

UTAH STONE COMPANIES

American Stone and Building Inc., Attn. Lon Thomas, 4040 South 300 West, Murray, UT 84107, (801)-262-4300. Quarries quartzite, onyx marble, red sandstone, tan sandstone, and granitic gneiss from Utah.

Hansen Stone Quarries, Attn. J. Weston Hansen, 8809 South 700 West, Sandy, UT 84070, (801)-255-2911. Quarries reddish brown and tan sandstones from Utah. Saws and carves stone.

Northern Stone Supply, Attn. Gary Mullard, Box 249, Oakley, ID 83346, (208)-862-3353. Quarries green quartzite from Utah. Produces large amounts of white and grey quartzite and granitic gneiss from Idaho.

State Stone Corp., Inc., Attn. Keith P. Mackay, 4640 South 300 West, Murray, UT 84107, (801)-262-9323. Quarries, cuts, and carves tan and red sandstone, white limestone, and gold, white, and grey quartzite from Utah.

Diversified Marketing Services, Attn. Steven Sorenson, P.O. Box 1181, Fillmore, UT 84631, (801)-743-5842. Primarily deals in ornamental and landscape stone but also produces banded rhyolite and lava for veneer.

Feller Holding Corporation, Attn. Alan Feller, 1051 North 1100 West, St. George, UT 84770, (801)-674-0169. Primarily deals in ornamental and landscape stone but also sells banded rhyolite, travertine, and onyx marble.

Idaho Quartzite Corp., Attn. Bill Hamm, 311 4th Street, North Extension Nampa, ID 83687, (208)-466-3550. Produces quartzite tile.

Imperial Stone, Attn. Jim Petersen, P.O. Box 298, Clarkston, UT 84305, (801)-563-9086. Mines quartzite from their own quarries and does stone masonry.

Lava Products Corp., Attn. Don Larkin, 45 North 300 East, St. George, UT 84770, (801)-673-9217. Produces lava for landscape use and building stone.

Mission Rock, Attn. Gary C. Thompson, 6400 South 2300 East, Salt Lake City, UT 84121, (801)-278-5267. Intermittently mines travertine for use as building stone, ornamental stone and landscape stone.

Paul Trunnell, P.O. Box 388, Heber City, UT 84032, (801)-654-0761. Quarries tan sandstone and does contract masonry work.

Robert M. Robison, 690 East Martindale Lane, Fillmore, UT, 84631, (801)-743-7005. Owns the Rock Corral travertine quarry; has recently leased it to Feller Stone and State Stone.

Stone Art Co., Attn. John P. Hechtle, 2100 West Center, Provo, UT 84601, (801)-373-0719. Owns several quartzite locations and is a retail outlet for building stones of the region.

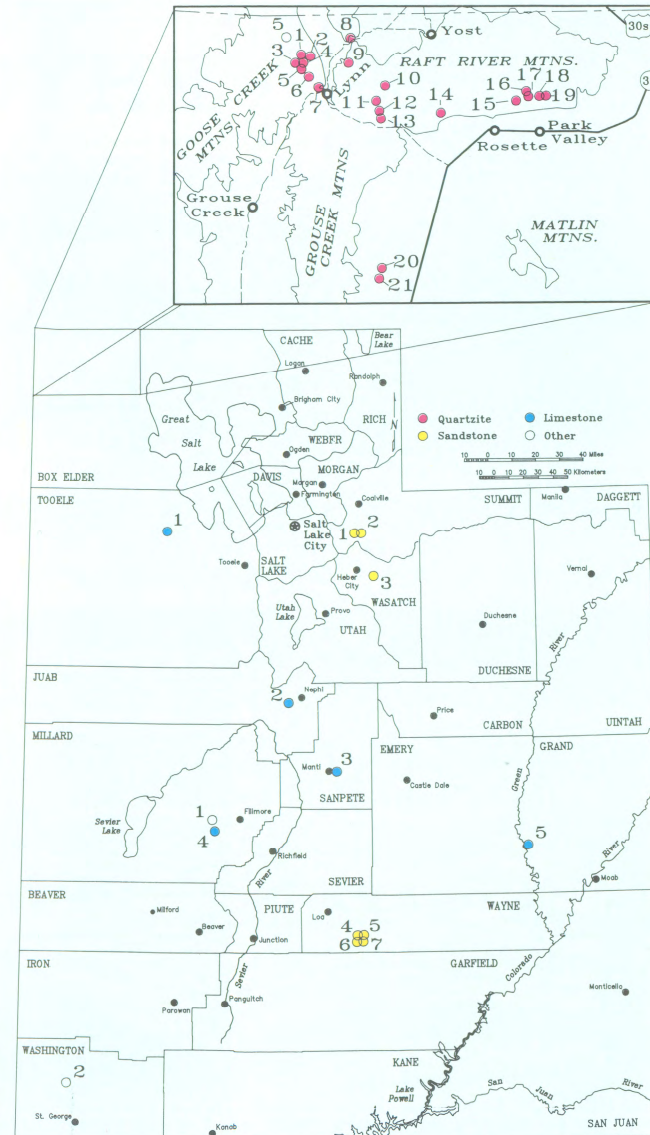
Utah Building Stone Supply, Attn. Preston Bown, 707 South 950 West, Woods Cross, UT, (801)-295-0601. Mines white, light grey, dark grey, and green quartzite from numerous quarries and does stone masonry.

Utah Stone Processors

Monroc, Attn. Ken Walker, 1730 North Beck, Salt Lake City, UT, 84103, (801)-359-3701. Incorporates quartzite and other stones into veneer for tilt-up concrete panels.

Rocktile Specialty Products Inc., Attn. Kenneth V. Franklin, 220 South Avenue A, Boise, ID (208)-342-7700. Produces a wide range of quartzite tile with and without custom edge treatments.

This list of companies may not be complete and does not necessarily imply an endorsement by the Utah Geological Survey.



Active building stone quarries in Utah.
Tables provide information about individual quarries.

UTAH BUILDING STONES – The Utah Geological Survey acknowledges the assistance of all the industry, government, and private organizations and individuals who made this publication possible. The Utah Division of Community and Economic Development provided partial funding for the project. Many individuals in the stone industry generously supplied information and stone samples; particularly helpful individuals include: Keith Mackay and Ernie Hale of State Stone, Glen Fuller, Gary Mullard of Northern Stone Supply, Preston Bown of Utah Building Stone Supply, Jim Petersen of Imperial Stone, Ken Franklin of Rocktile Specialty Products Inc., Gary Thompson of Mission Rock, Steven Sorenson of Diversified Marketing Services, Alan Feller of Feller Holding, and Bill Hamm of Idaho Quartzite. Several companies and individuals provided photographs: Lori Olds of Hartenstein Communications, Bill Hamm of Idaho Quartzite, Noel Barnhurst, Spatafore and Associates, and John Blades of the Hearst San Simeon California State Monument, and the Utah Travel Council. Keith Mackay and Gary Mullard reviewed the pamphlet and made many useful comments and suggestions. Brochure compiled and edited by Bryce T. Tripp. Brochure design: Patti F. MacGann. Stone collage photography by Rip Black Photography, Salt Lake City, Utah.

INTRODUCTION



UTAH'S GEOLOGICAL DIVERSITY provides a wide variety of known building stones in the state and potential for discovery and production of many other types.

Utah's building stones, currently in production, are quartzite, sandstone, and limestone. Rhyolite, granitic gneiss, and lava are produced in smaller amounts. There is also potential for future development of granite, marble, and slate. Although Utah is not widely known as a stone producing state, its stones grace both historical and contemporary buildings in a majority of the states of the Union and several foreign countries.

UTAH HAS A WELL-ESTABLISHED, INNOVATIVE STONE INDUSTRY which has grown by placing increasing emphasis on out-of-state markets and by adding value to the stone by doing more cutting, carving, and polishing. The industry should grow at a healthy rate through increased capitalization, development of new products, and increased marketing.

SANDSTONE

Red sandstone and tan sandstone have been quarried in Utah from pioneer days to the present. A traditional center of Utah sandstone production is the Park City-Heber City area; sandstone is still quarried there. The Park City-Heber City sandstone quarries are sited on outcrops of flaggy to thick bedded, tan and red sandstone. A new center for stone quarrying and sawing has recently developed around Torrey, Utah in the south-central part of the state. The Torrey sandstone quarries are sited in thick, massive sandstone that yields large blocks for sawing. Some sawing is done near the quarry sites, and the resulting products are shipped to Salt Lake City for finishing.



Facade of Salt Lake City and County Building, Salt Lake City, Utah. Above: detail of same. Photos courtesy Noel Barnhurst.

Torrey Red sandstone in the interior of the GTE Telephone Hidden Ridge facility at Irving, Texas.

QUARTZITE

Six companies quarry quartzite flagstone and ashlar from northwestern Utah. This area contains thick, extensive deposits of flaggy quartzite. The stone varies from 1/4-inch to 9-inches thick, with a significant percentage of slabs from 1/4- to 2-inches thick. These thin slabs often occur in large sheets. The quartzite is a very smooth, flat, hard, durable material with a non-skid surface texture. It has high compressive and flexural strength. Utah quartzite's desirable physical characteristics makes it a perfect stone for interior and exterior building veneer, fireplace veneer, veneer for tilt-up concrete



Quartzite floor tile at the Union Insurance Company, Hannover, West Germany (used with permission of Idaho Quartzite Company).



panels, and for paving materials. Most of this stone is sold as natural slabs in lots sorted by split thickness, color, and slab size. An increasing amount of Utah quartzite is being sold as sawed tile, sorted by thickness and color.

Quartzite floor tile at an El Paso, Texas bank (photograph courtesy Idaho Quartzite Company).

RHYOLITE



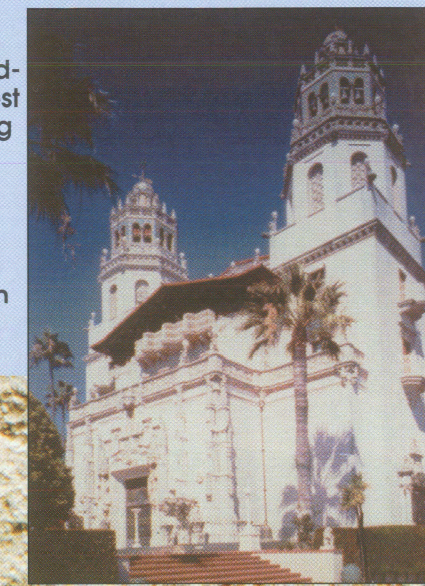
Vejo rhyolite (rainbow variety) rubblestone veneer, on the St. George Care Center, St. George, Utah.

Rhyolite has been used as a building stone in Utah for some time. Rhyolite is a volcanic stone that somewhat resembles a light colored sandstone. It sometimes contains intricate color banding in shades of white, lavender, tan, orange, and blue which makes the stone very decorative. No rhyolites are currently quarried in Utah, but three Utah firms own rhyolite deposits in Nevada and process and market the stone from Utah stone yards.



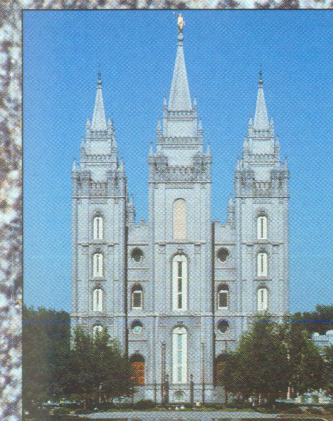
LIMESTONE

Utah companies produce four types of limestone: Rock Corral tufa and travertine; old Rock Farm travertine; Aragonite Onyx Marble and Nephi onyx marble; and Sanpete White limestone. Rock Corral tufa and travertine is a buff to yellowish-brown, cellular to compact, hot springs limestone deposit. Old Rock Farm travertine is salmon, pink, and brown banded, compact, hot springs limestone. Aragonite onyx marble is a concentrically banded, white, cream, and tan stone usually produced in chunks for rubblestone veneer but is sometimes sawed and polished. Large boulders could be produced from this vein deposit. Nephi Onyx Marble resembles Aragonite Onyx Marble but with orange banding. Sanpete White limestone is a white, oolitic, freshwater limestone. Sanpete White limestone is used in several prominent Salt Lake City buildings and buildings in other states. There are several good examples of Sanpete White limestone buildings on the west coast including the Hearst Castle in San Simeon, California and the Sheraton Palace Hotel in San Francisco, California.



The Sanpete White limestone facade of the Hearst Castle, San Simeon, California. Limestone veneer was applied over concrete walls of the main house (La Casa Grande). Photo courtesy Hearst San Simeon State Historical Monument; photographer: John Blades.

GRANITE



Salt Lake City Church of Jesus Christ of Latter-day Saints (Mormon) Temple, courtesy Utah Travel Council.

Two stone companies have begun producing Rocky Mountain Granite, a naturally cleft, granite gneiss. The granite is gray with a slight green tinge. The stone is accentuated by light iron staining, quartz inclusions, and mica flecks. It is sorted into two thickness lots: the 2-inch to 4-inch stone covers 50-55 square feet per ton; the 1-inch to 2-inch thick stone covers 80-90 square feet per ton. The stone is hard and freeze-proof.

LAVA

Reddish-brown, brown, and black, vesicular lava rubble stone is produced from the St. George and Fillmore areas for use as building and fireplace veneers. Chunks that have interesting surface flow texture are collected from the surface of flows and are sometimes sawed on one side to make installation easy. This stone has the advantages of being easily sawed, easily installed, and light-weight. The St. George lava weighs only 870 pounds per cubic yard.

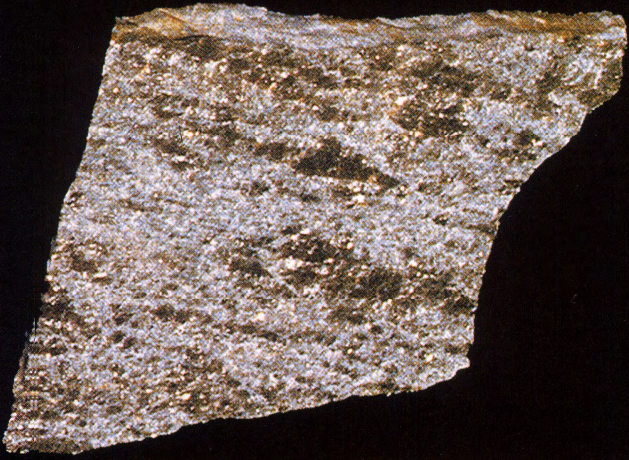
Black lava veneer on a Salt Lake City residence.



QUARTZITE



Pearly silver-white quartzite flagstone.



Charcoal-grey quartzite flagstone.



Light silvery orangish-white quartzite flagstone.



Gold quartzite flagstone with bronze banding.



Gold quartzite (Klondike Gold) flagstone.



Sage-green quartzite flagstone.



Bluish-green quartzite flagstone.



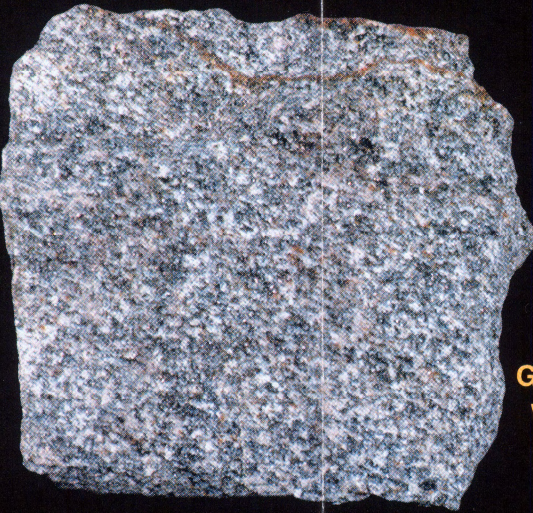
White and gold quartzite veneer.



Charcoal-grey quartzite ashlar with iron staining.

—UTAH DIMENSION STONE—
Prepared by the Utah Geological Survey
2363 South Foothill Drive
Salt Lake City, Utah 84109-1491
Rock photos by Rip Black Photography, SLC, UT

GRANITE



Grey granite gneiss with iron staining and mica flecks.

LAVA



Brownish-red lava with ornamental flow texture.



Black lava with "ropy" flow texture.

RHYOLITE



Vejo rhyolite (rainbow variety) veneer.



Tonopah rhyolite, an ornately banded, fine-grained, flaggy rhyolite.



Vejo rhyolite (rainbow variety), also available in buff and blue varieties.

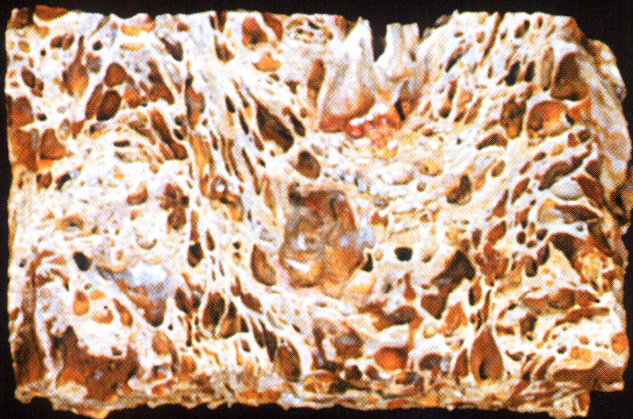
LIMESTONE



Nephi Honey Onyx, a light-orange and white banded onyx marble.



Old Rock Farm travertine, sawed surface.



Rock Corral tufa, rough sawed.



Sanpete White oolitic limestone.

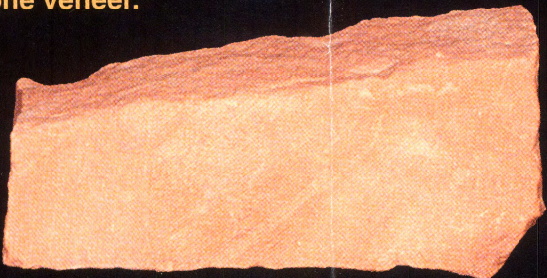
SANDSTONE



Park City Tan sandstone veneer.



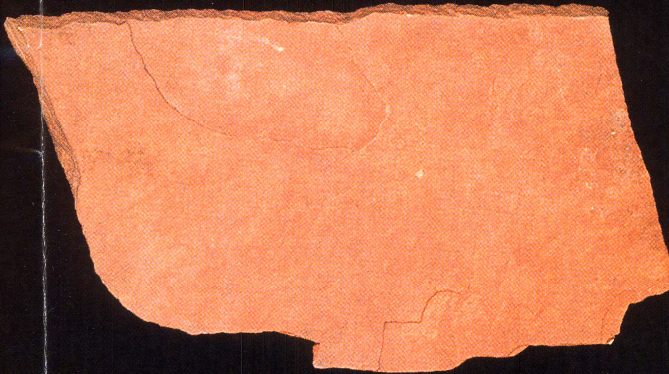
Torrey Tan sandstone, sawed perpendicular to bedding.



Torrey Red sandstone ashlar.



Park City Tan sandstone flagstone.



Heber City Red sandstone flagstone.