

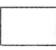
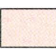





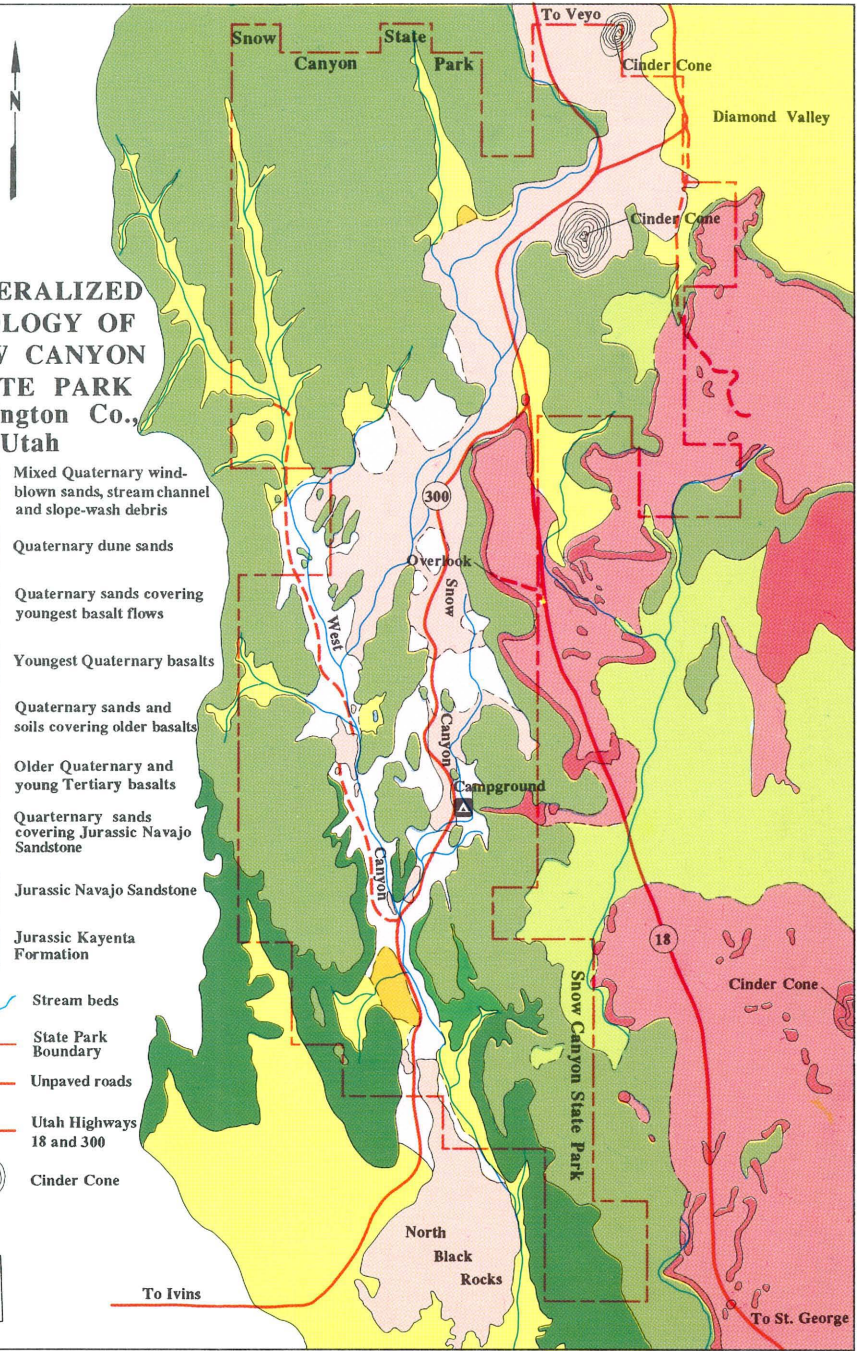


GENERALIZED GEOLOGY OF SNOW CANYON STATE PARK Washington Co., Utah

-  Mixed Quaternary wind-blown sands, stream channel and slope-wash debris
-  Quaternary dune sands
-  Quaternary sands covering youngest basalt flows
-  Youngest Quaternary basalts
-  Quaternary sands and soils covering older basalts
-  Older Quaternary and young Tertiary basalts
-  Quaternary sands covering Jurassic Navajo Sandstone
-  Jurassic Navajo Sandstone
-  Jurassic Kayenta Formation

-  Stream beds
-  State Park Boundary
-  Unpaved roads
-  Utah Highways 18 and 300
-  Cinder Cone



SNOW CANYON STATE PARK



UTAH GEOLOGICAL SURVEY
and PARKS AND RECREATION
Department of Natural Resources

Snow Canyon State Park near St. George in the southwest corner of Utah has the basalts, Kayenta Formation, and Navajo Sandstone that make spectacular scenery throughout southern Utah. Of special interest are the cinder cones and lava tubes. The small park charm and geologic vistas make it a fine recreation area.

Utah Geological Survey • 2363 S. Foothill Drive • Salt Lake City, UT 84109-1491 • (801) 467-7970

FIRST
CLASS
POSTAGE
REQUIRED