

# Utah:

## A Geologic History

### From Paleozoic to Present

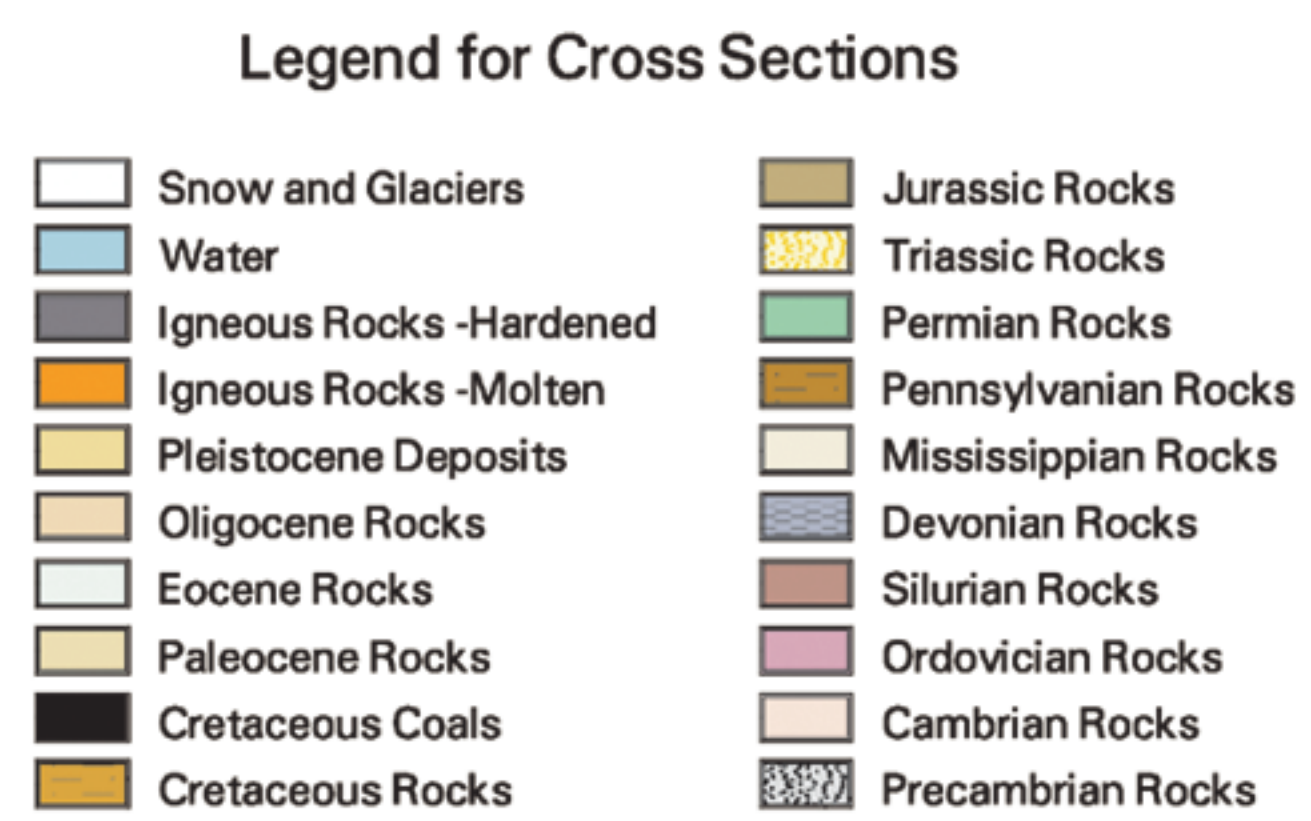
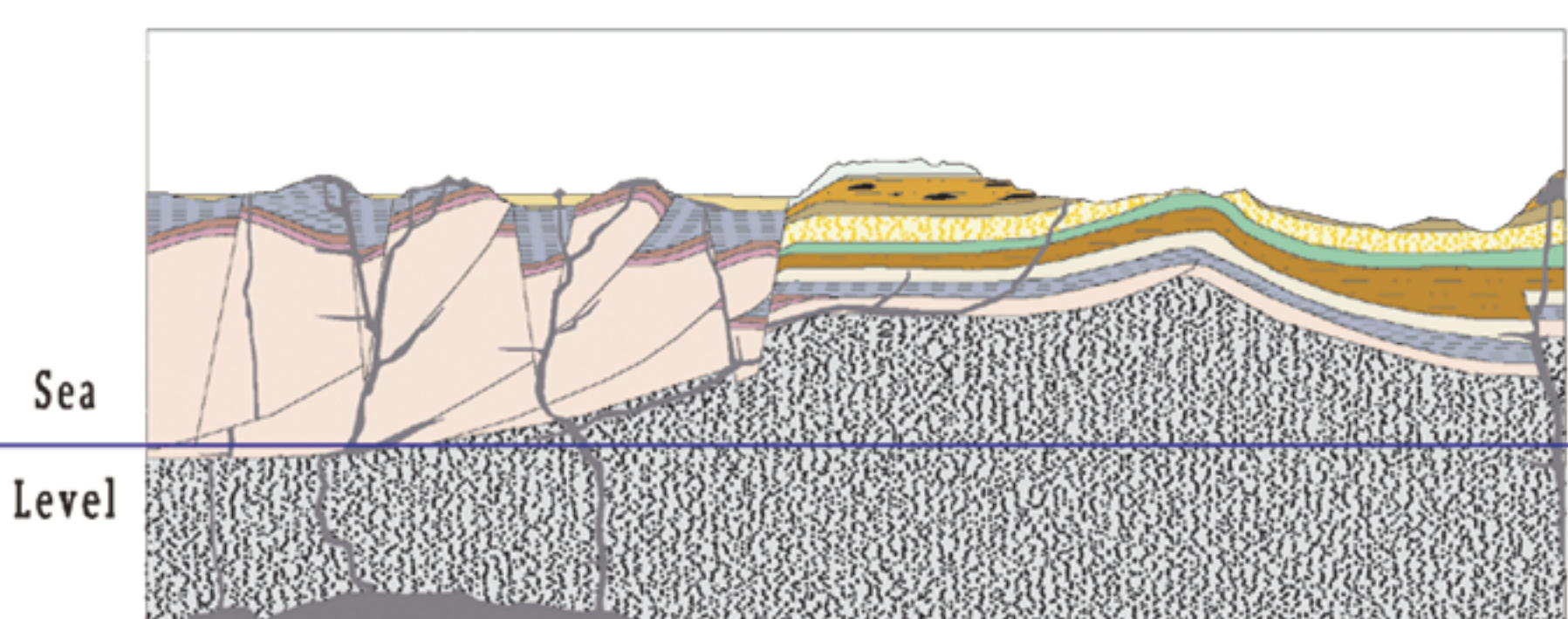
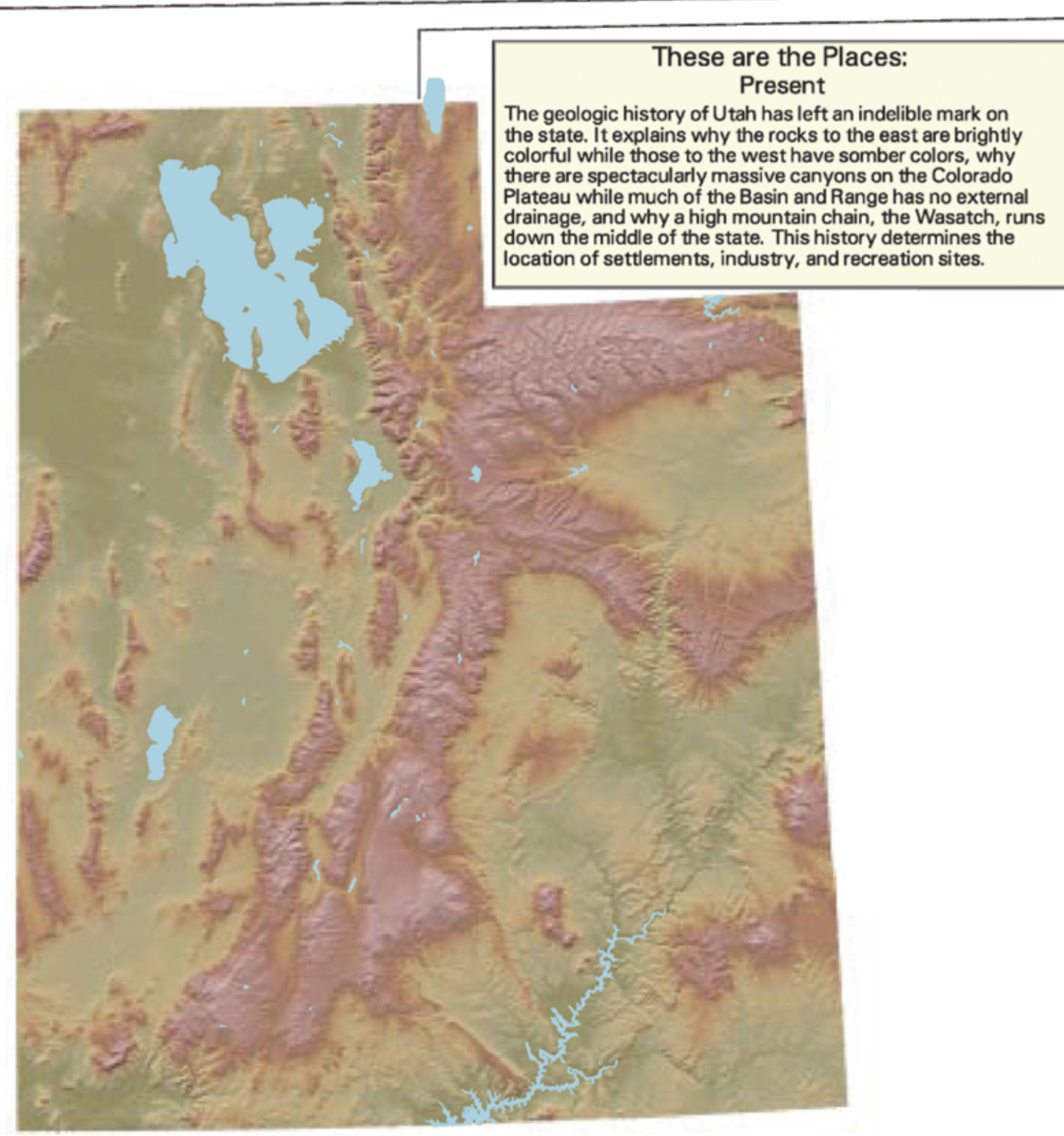
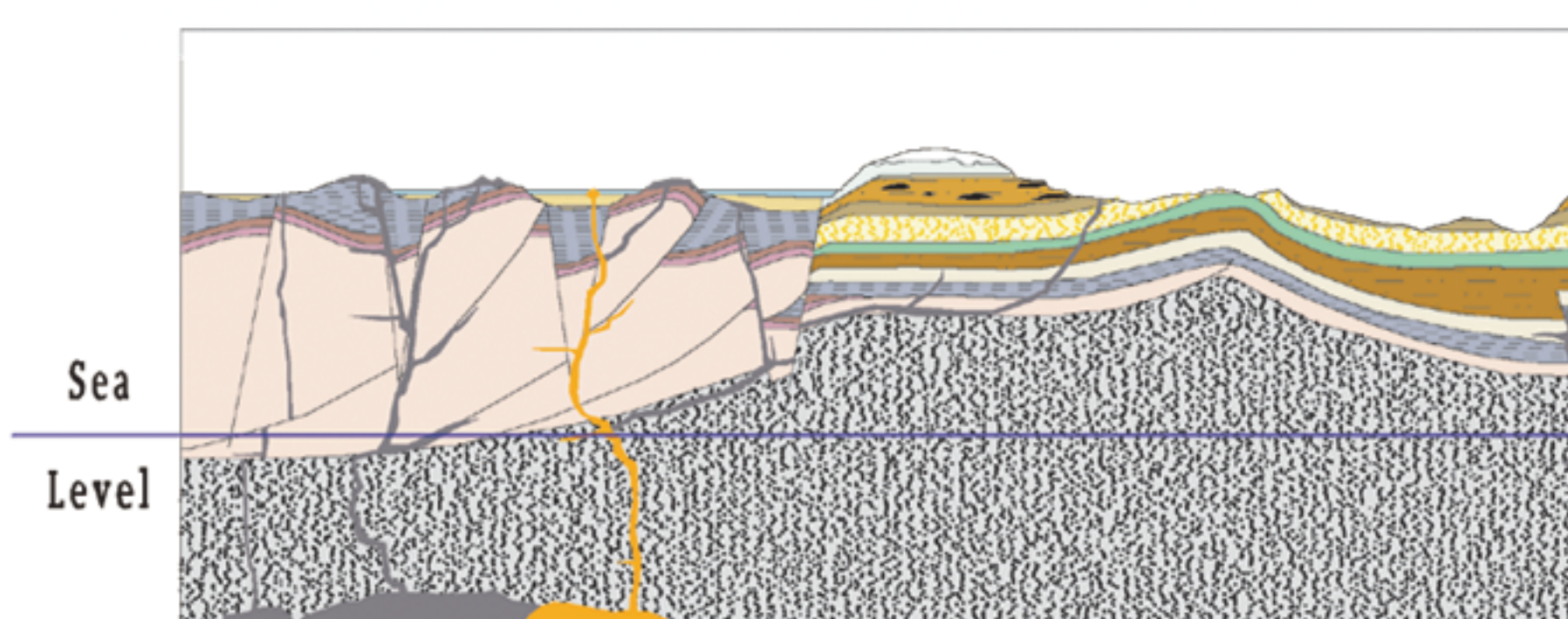
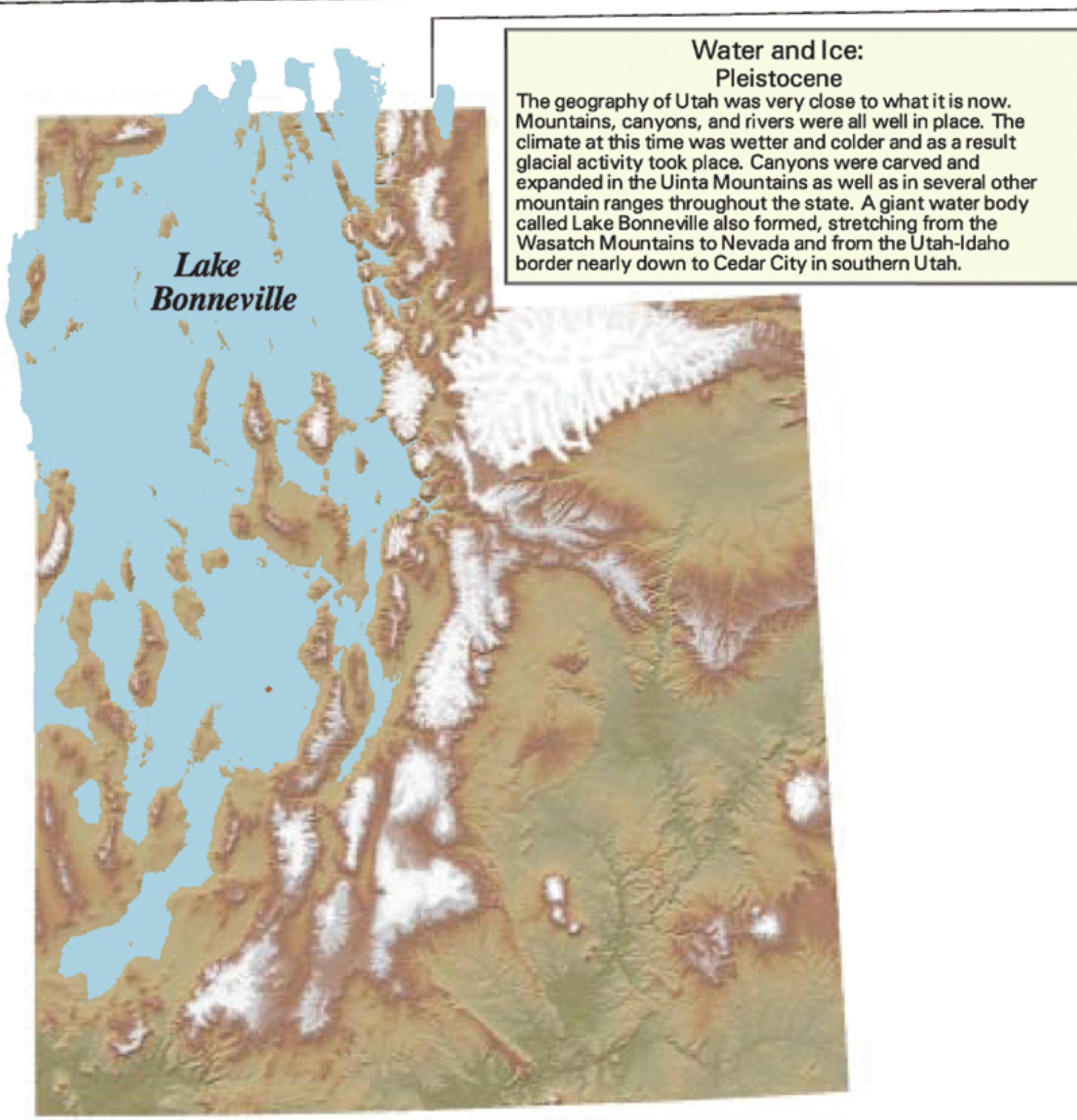
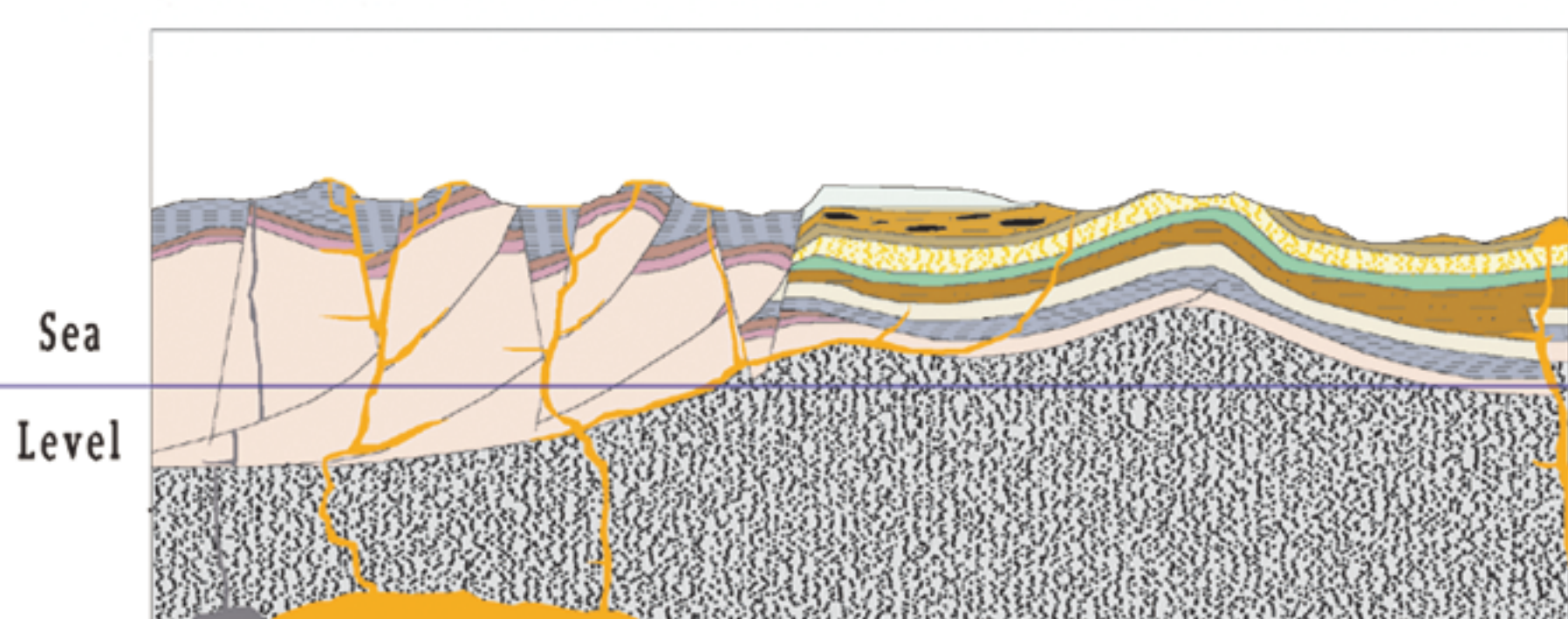
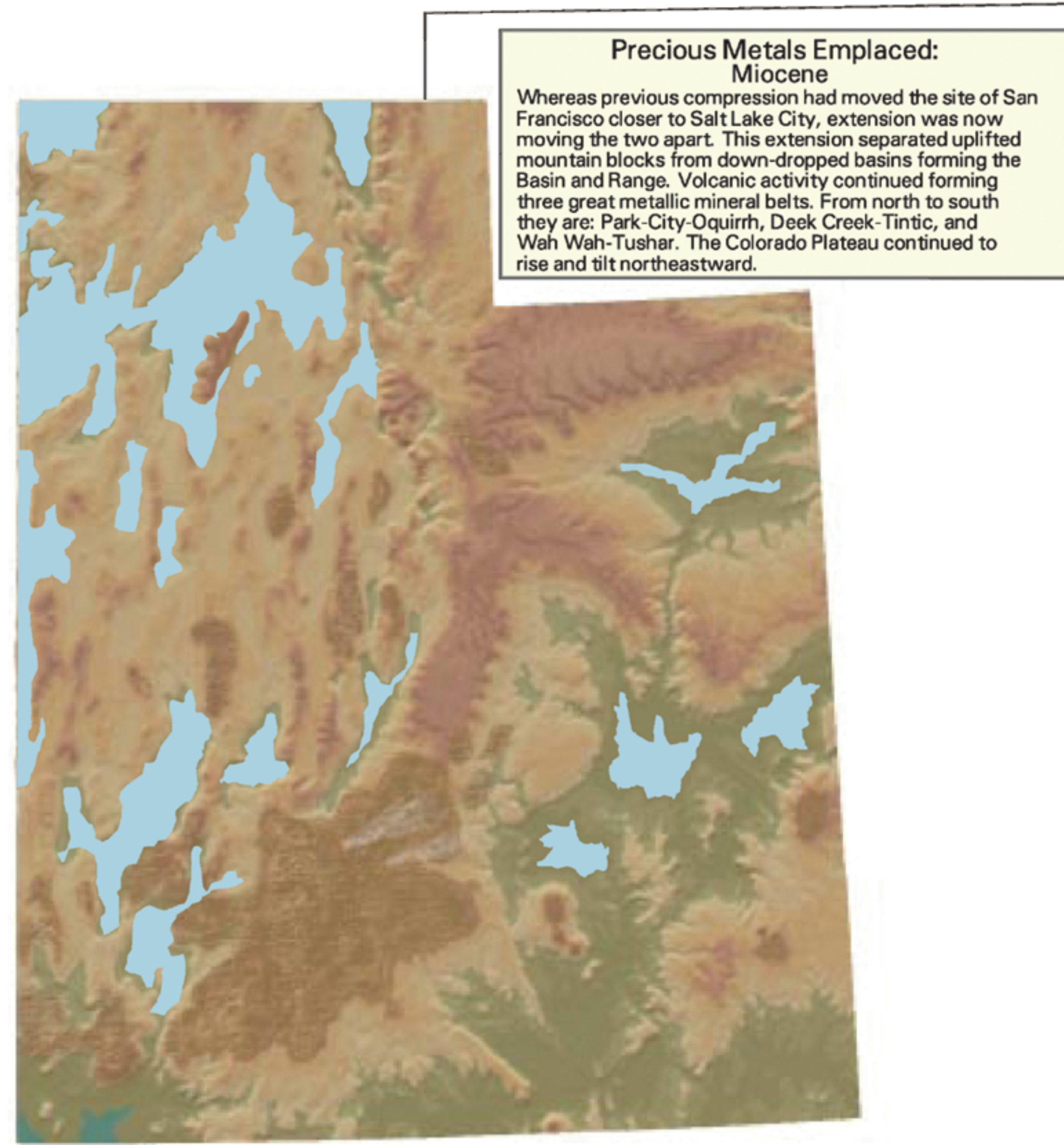
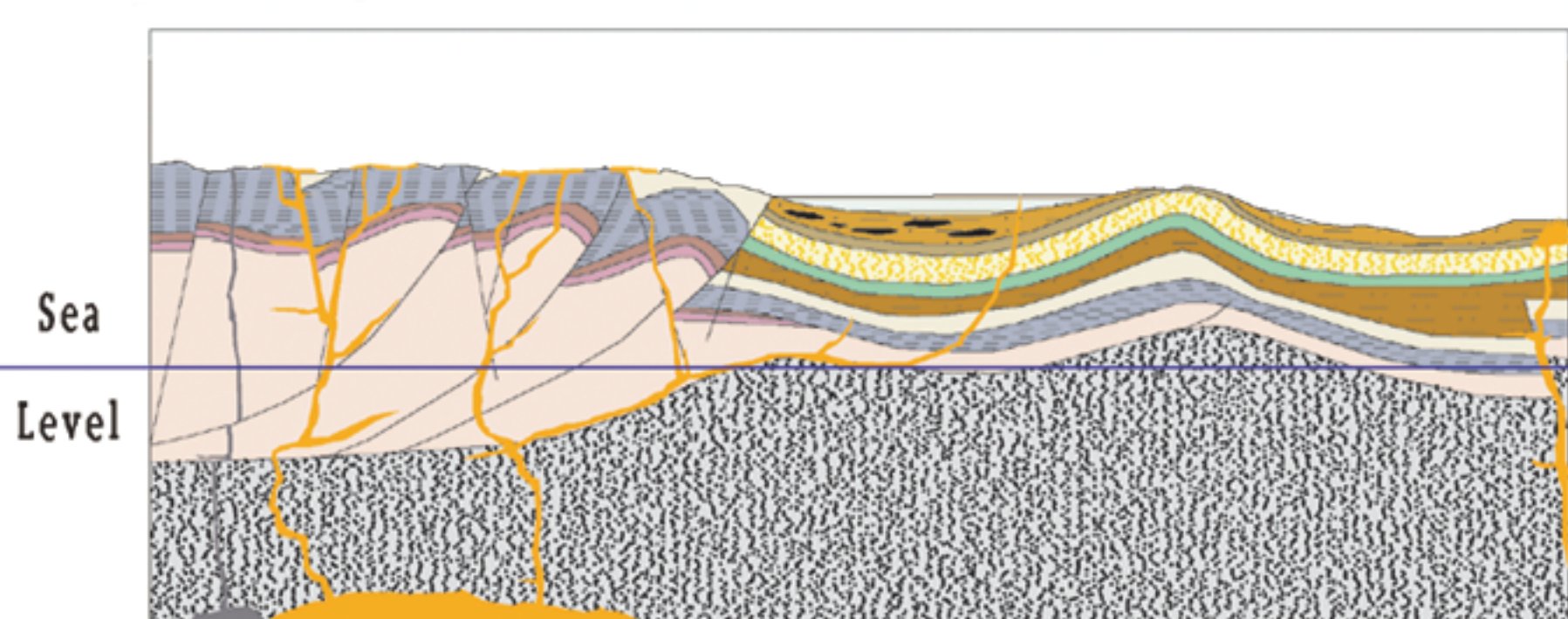
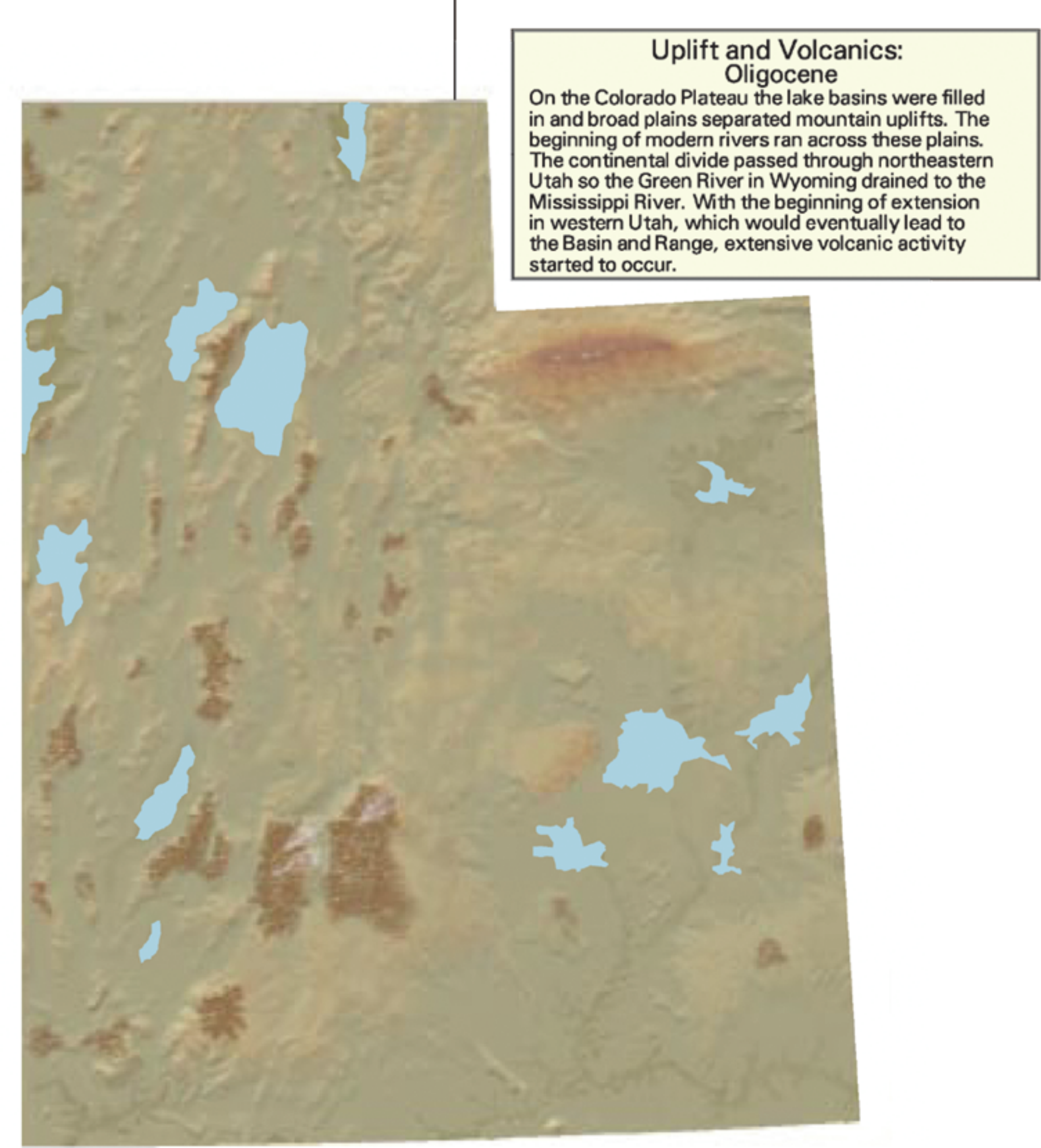
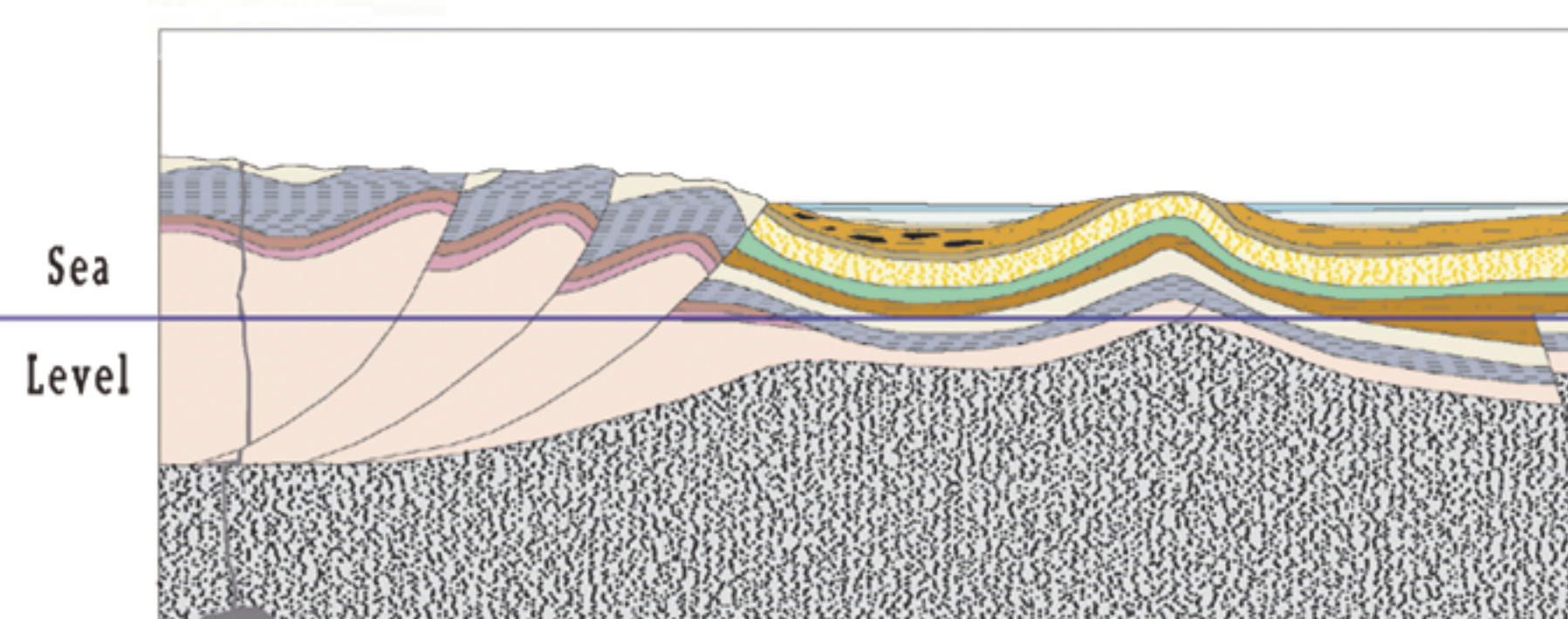
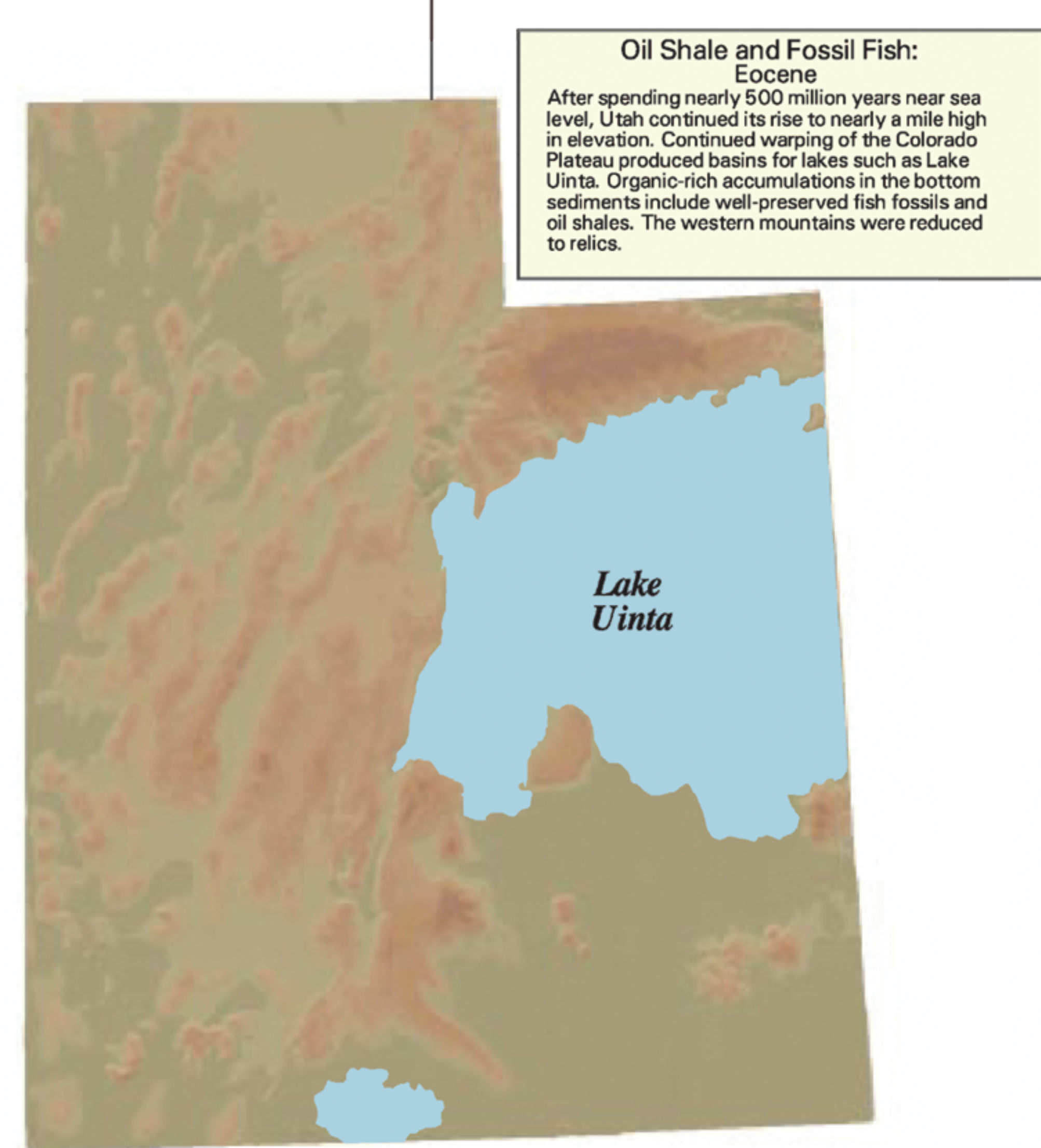
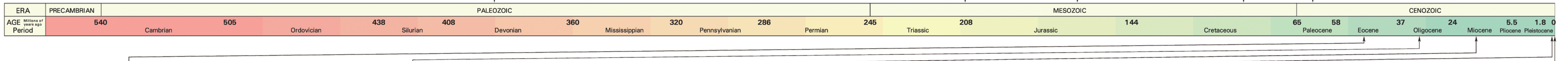
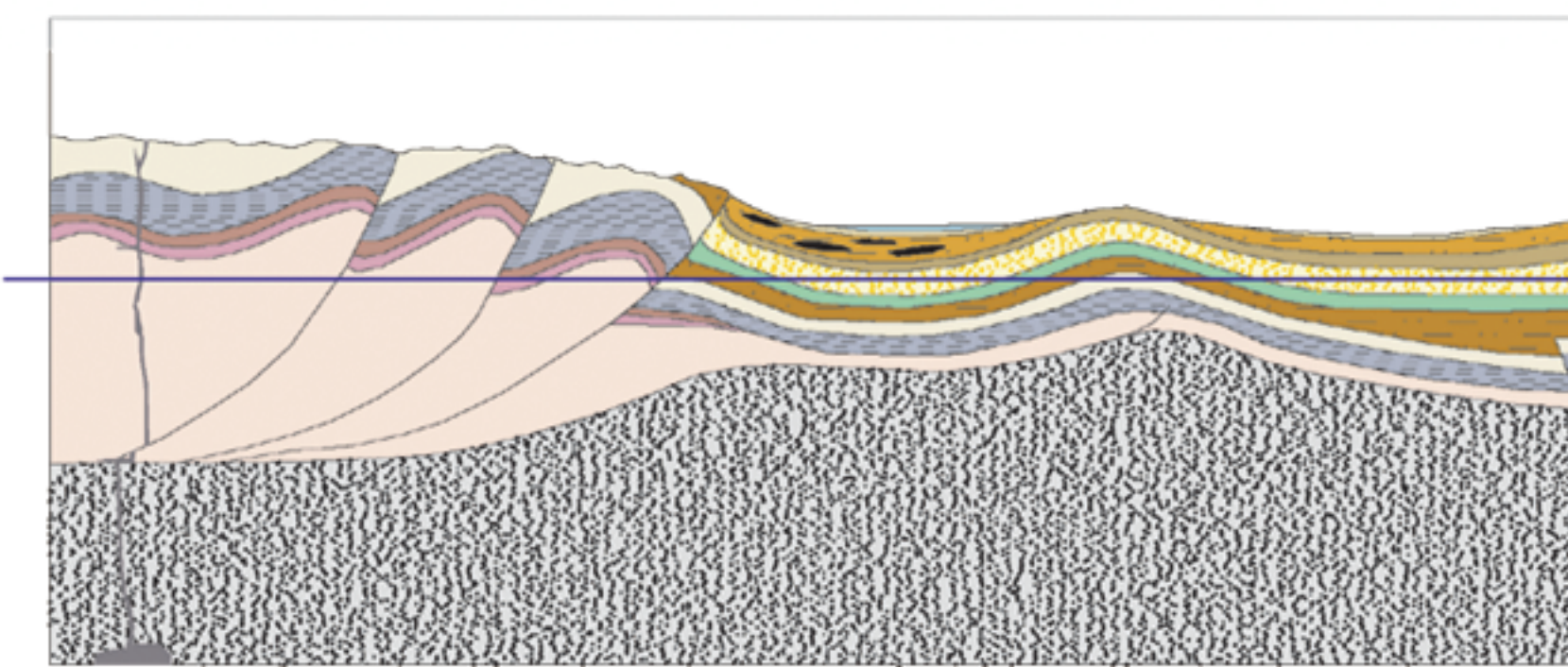
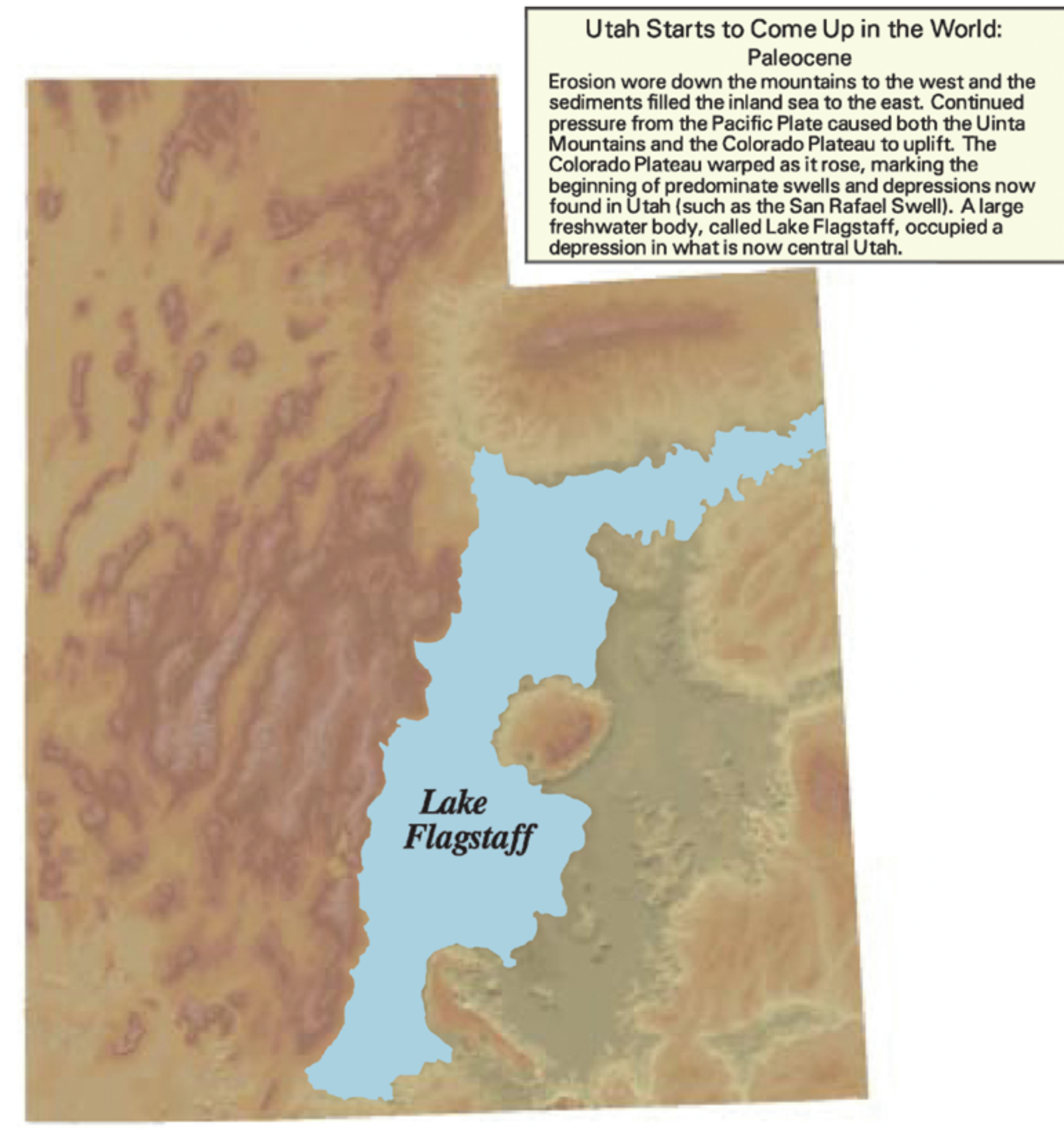
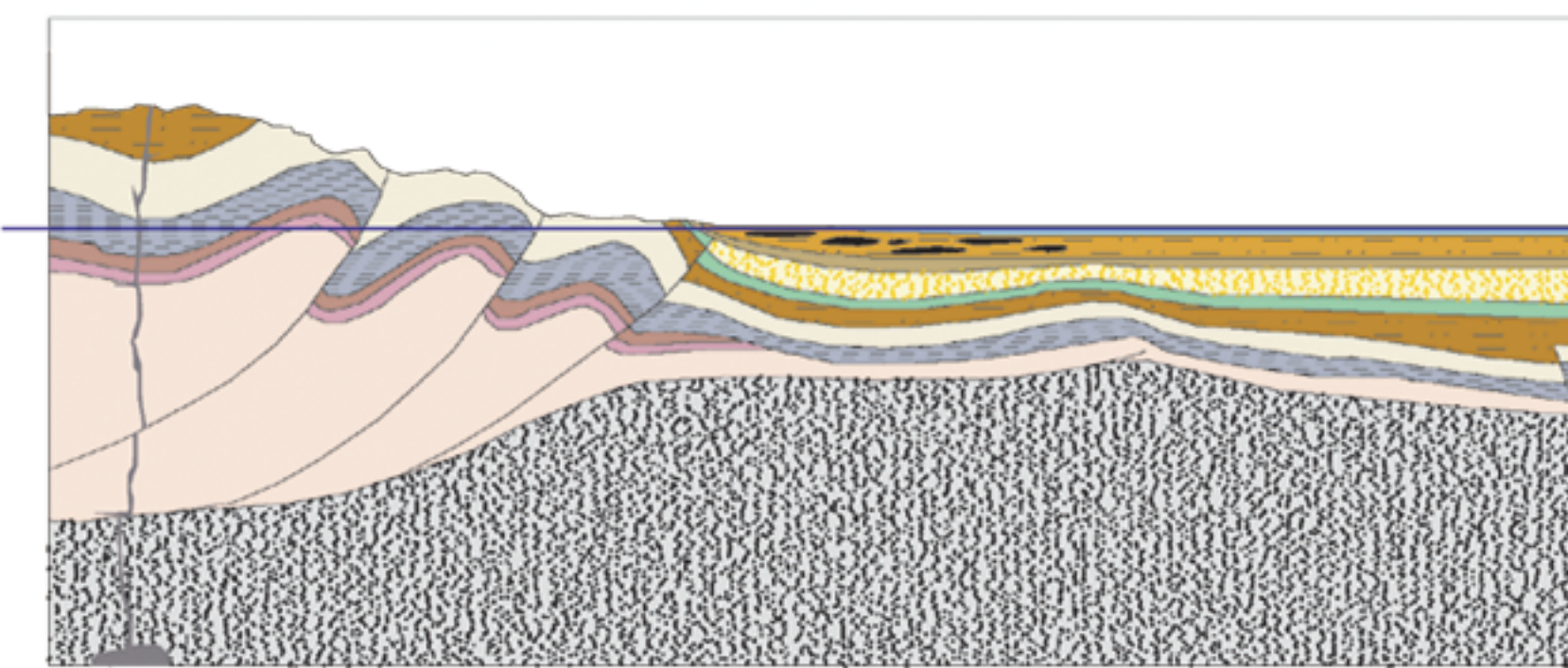
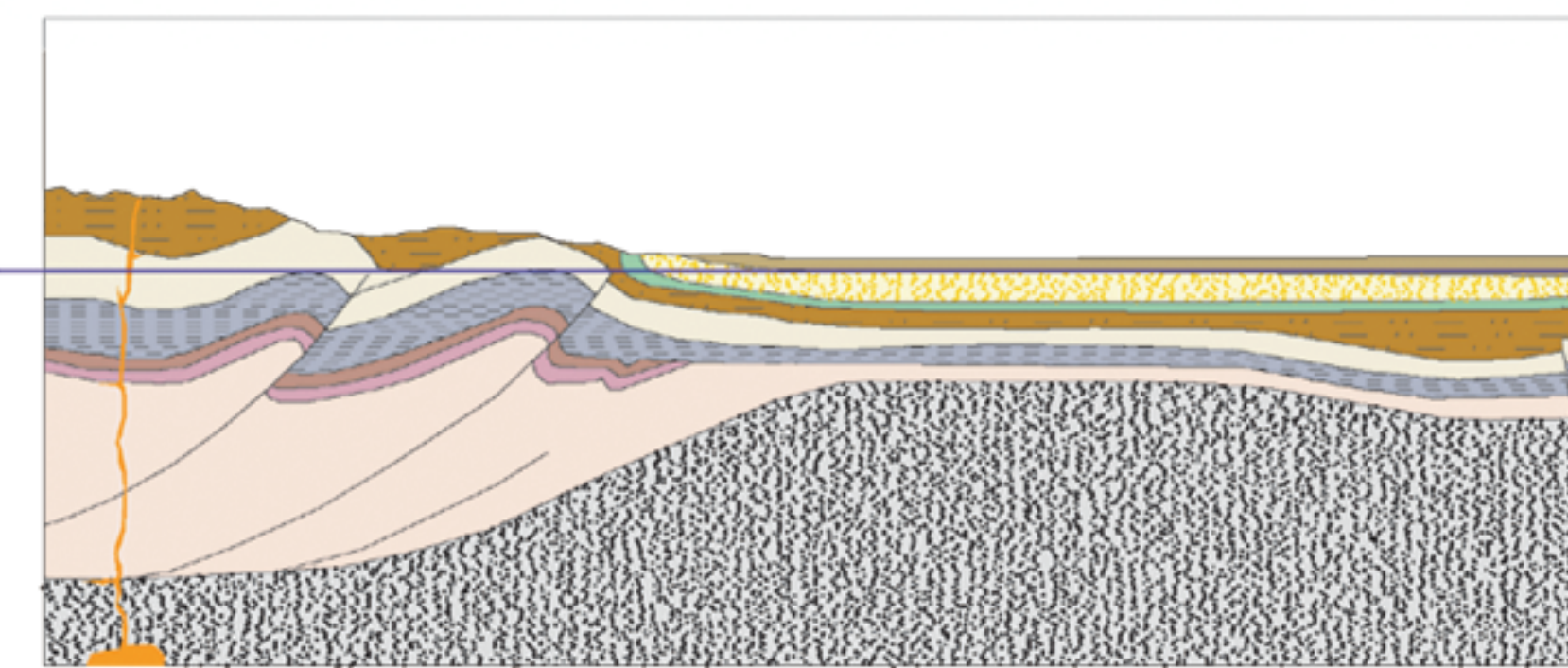
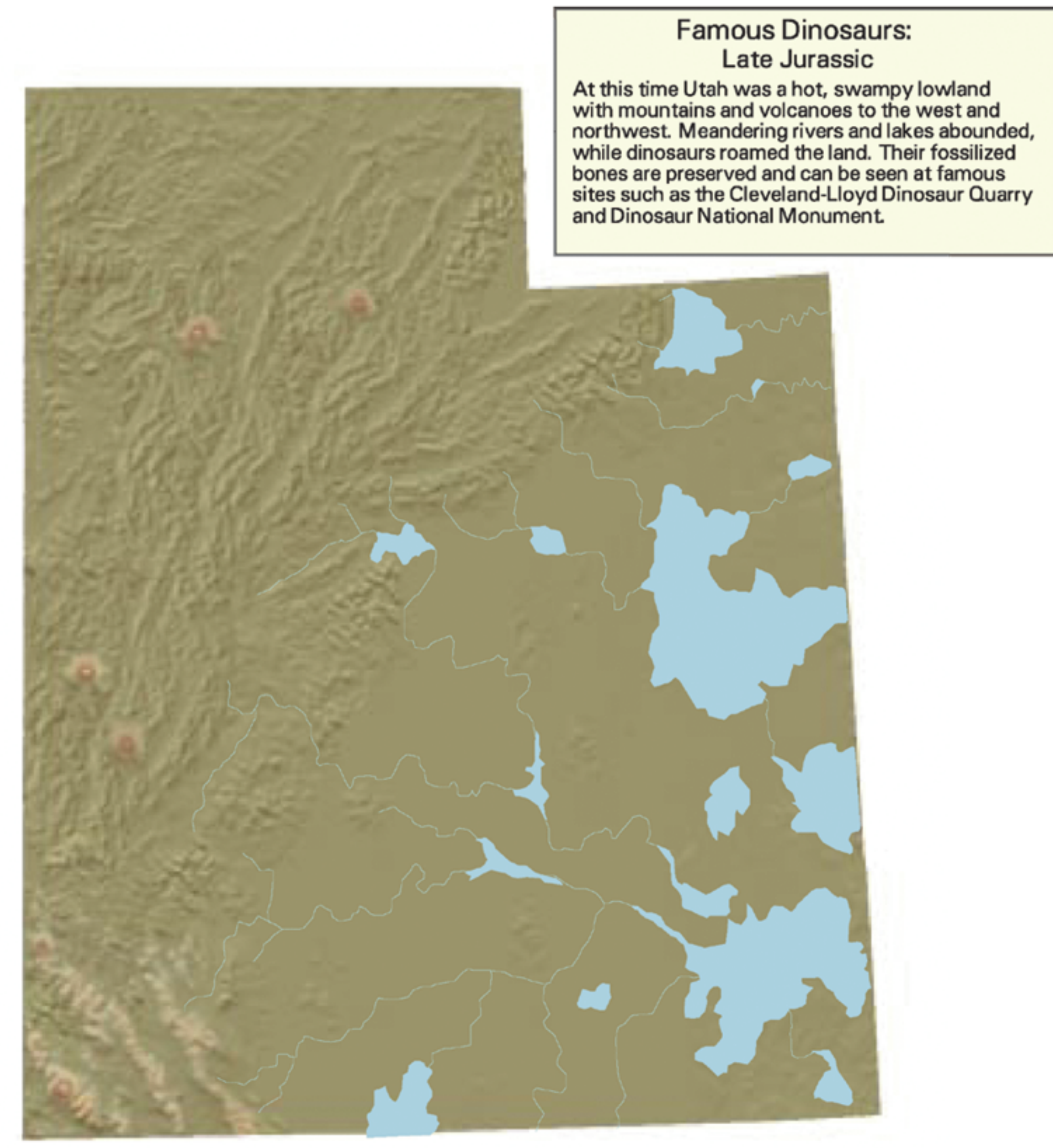
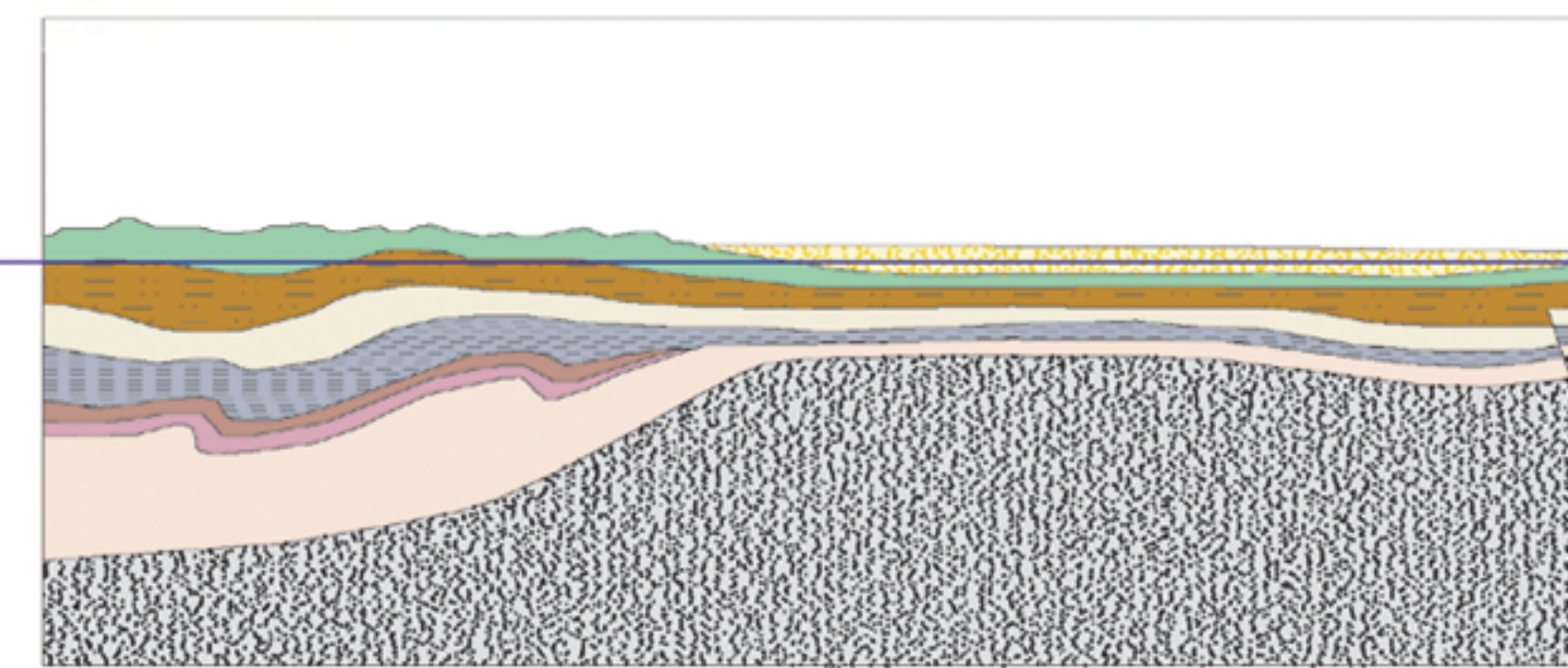
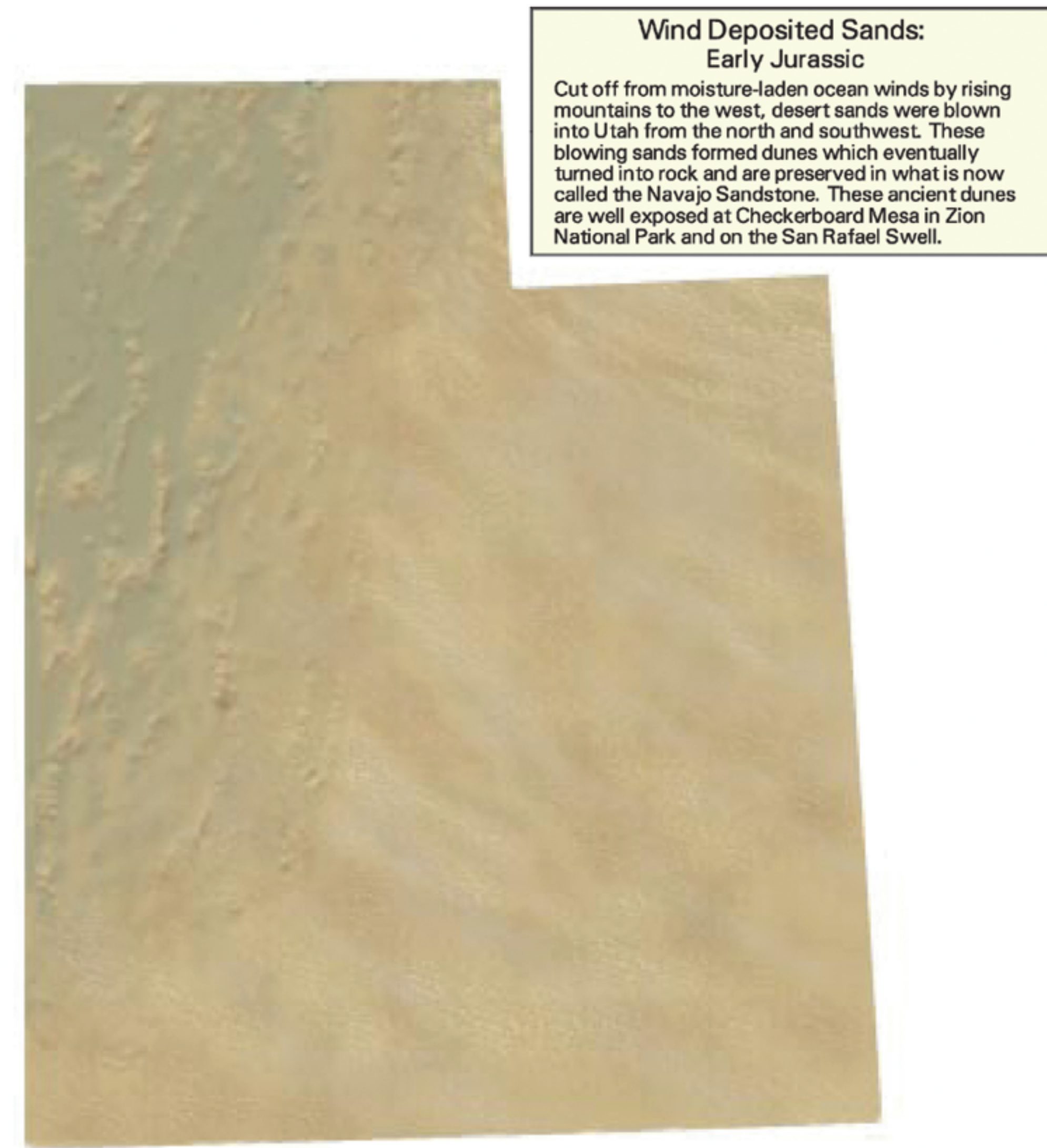
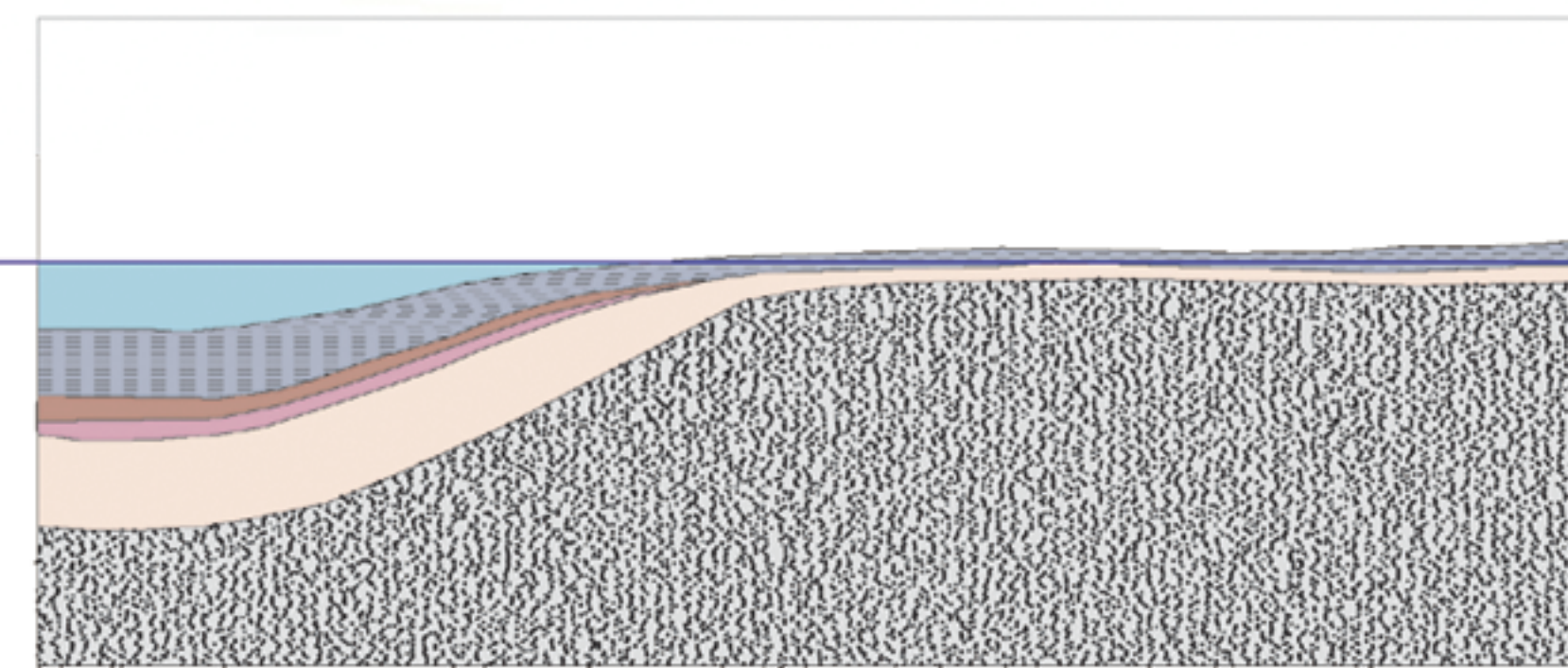
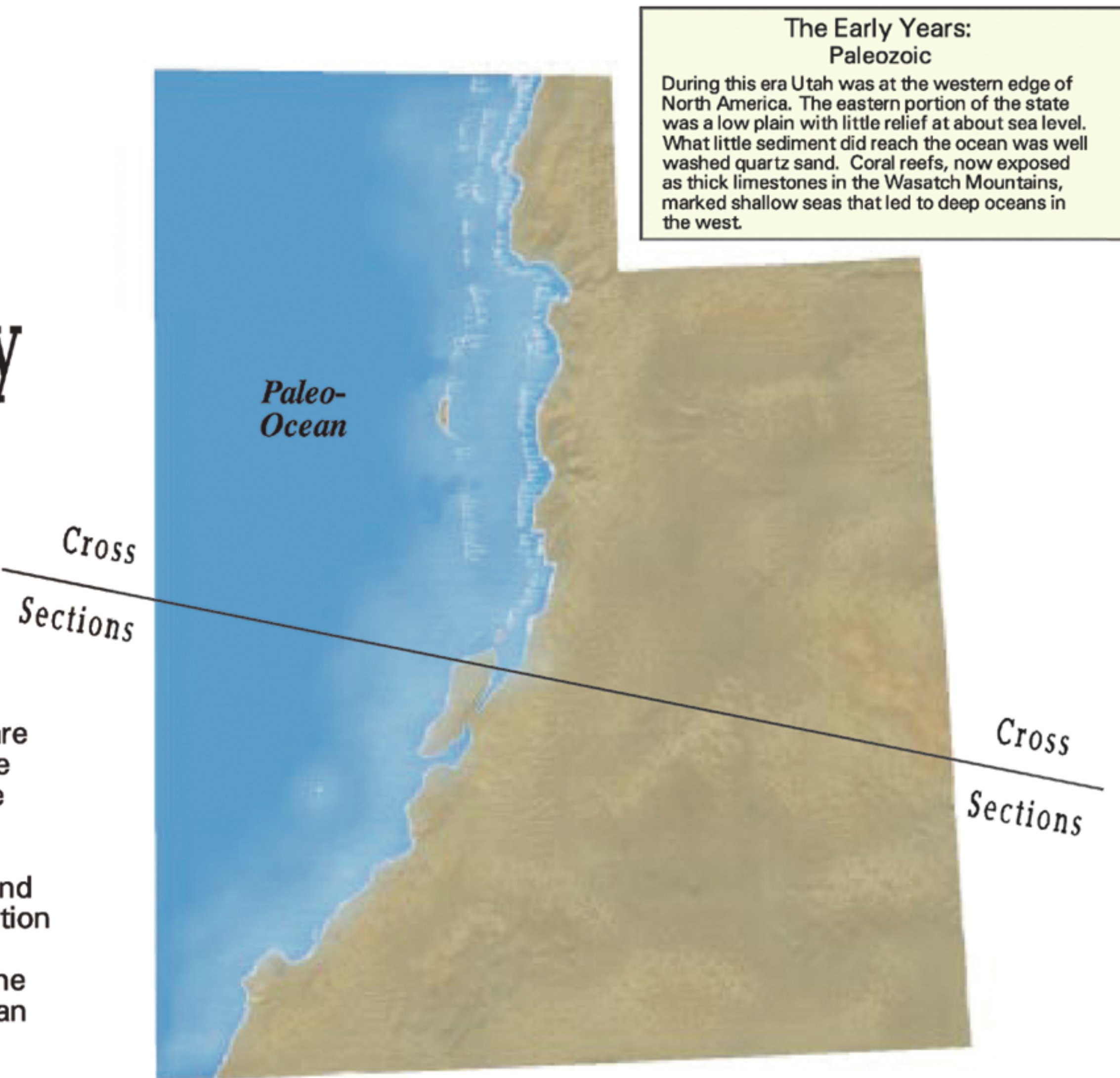
These images give a conceptual idea of what the State of Utah may have looked like in its geologic past.

Today it is a land of great diversity and scenery. There are many factors that have determined the changes that the state has undergone through time. In a sense it could be said that Utah has had many different faces.

At times in the past Utah has been covered by oceans and inland seas, and at times it has been dry land. The elevation has changed as well, ranging from sea level to over two miles above sea level. There have been periods where the topography has been relatively flat and times of mountain building and valley formation.

Utah has not always had the moderate climate that it has today. There have been wet tropical periods, dry dusty desert environments, and cold times that caused glaciers.

The geographic position of Utah has changed through time as well. Although these images represent Utah in its present orientation, the state has not always been so. Due to continental drift the state has moved from a position on the equator to its present location and in doing so has rotated nearly 90 degrees from an east-west orientation to its present north-south position.



Public Information Series #54  
Utah Geological Survey  
a division of  
Utah Department of Natural Resources

Preparers: Russell W. Reading, Andrew E. Godfrey, David A. Prevadel

**References:**  
Hunt, Charles B., 1956, "Cenozoic History of the Colorado Plateau"  
Stokes, William Lee, 1986, "Geology of Utah"  
Hintze, Lehi F., 1988, "Geologic History of Utah"  
Cooper, John D., et al., 1990, "A Trip Through Time"  
Data Source: U.S. Geological Survey Digital Terrain 1:100,000 Data  
Software: ESRI ArcInfo Grid 7.04, ESRI ArcPress, Paint Shop Pro

Produced by:  
USDA Forest Service Intermountain Region  
GIS Center of Excellence, Ogden, Utah 1998