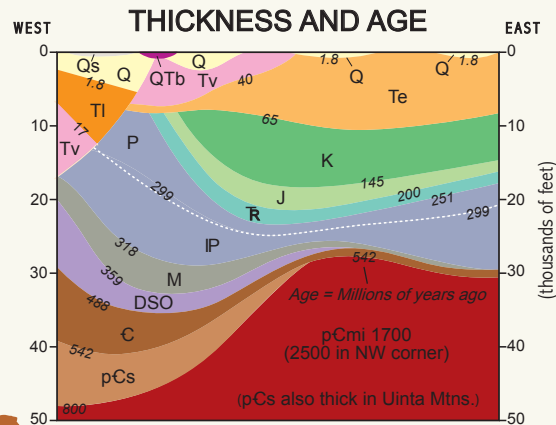
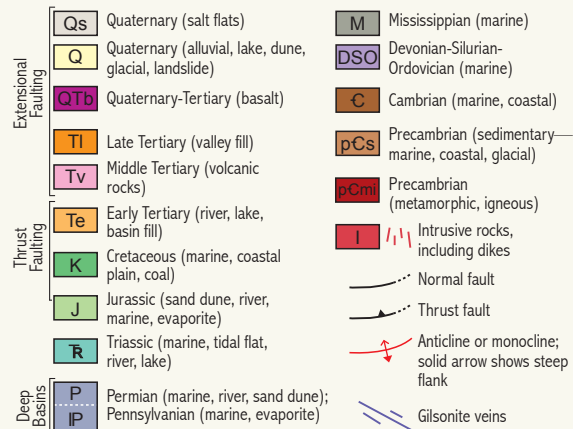
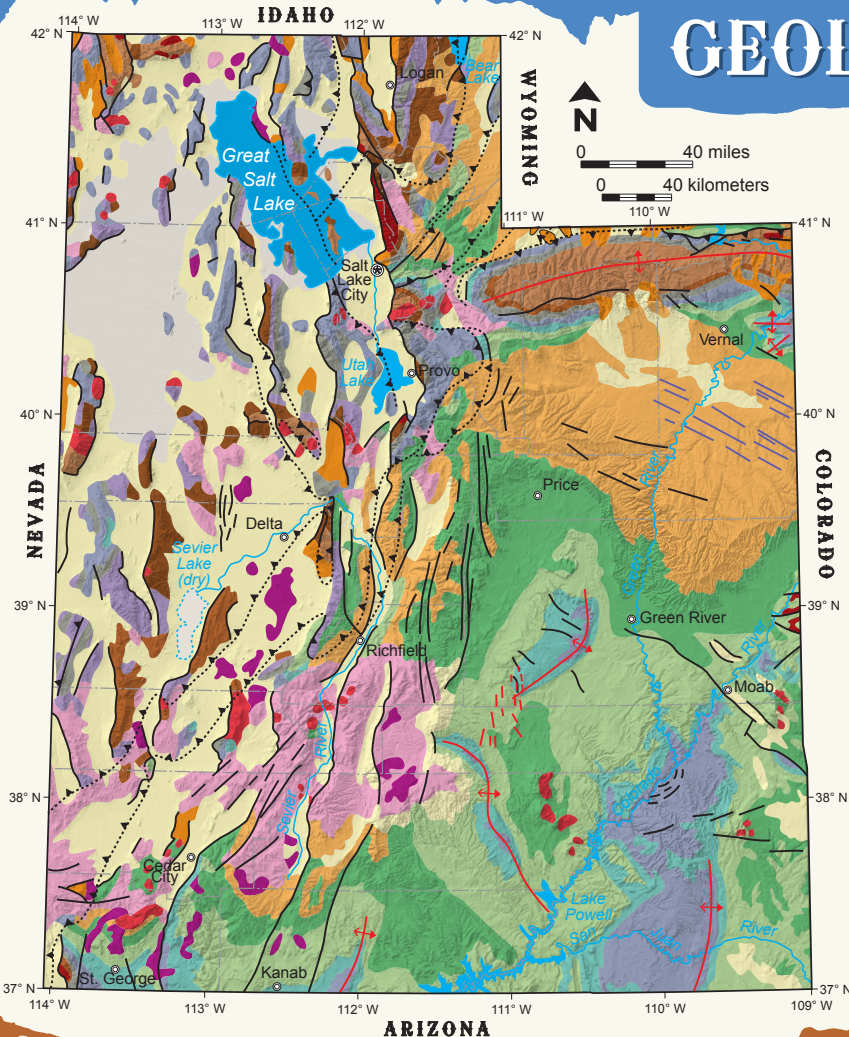


GEOLOGY OF UTAH





GEOLOGY OF UTAH

geology.utah.gov

To many people Utah is the Geology State. This simplified geologic map reflects the large variety of geologic events from over 2600 million years that created the spectacular scenery of Utah's red rock country, high alpine peaks, and expansive basins and ranges. The modern landscape formed during the Tertiary and Quaternary as regional uplift, major faults such as the Wasatch fault, glaciers, and deep erosion pushed up mountains, opened large basins, and carved canyons, arches, bridges, spires, and cliffs. Over 10 million people visit Utah's geology-based parks, monuments, and recreation areas each year.

Utah Geological Survey, Dept. of Natural Resources, 1594 W. North Temple, PO Box 146100, Salt Lake City, Utah 84114-6100 (801) 537-3300

FIRST CLASS
POSTAGE
REQUIRED