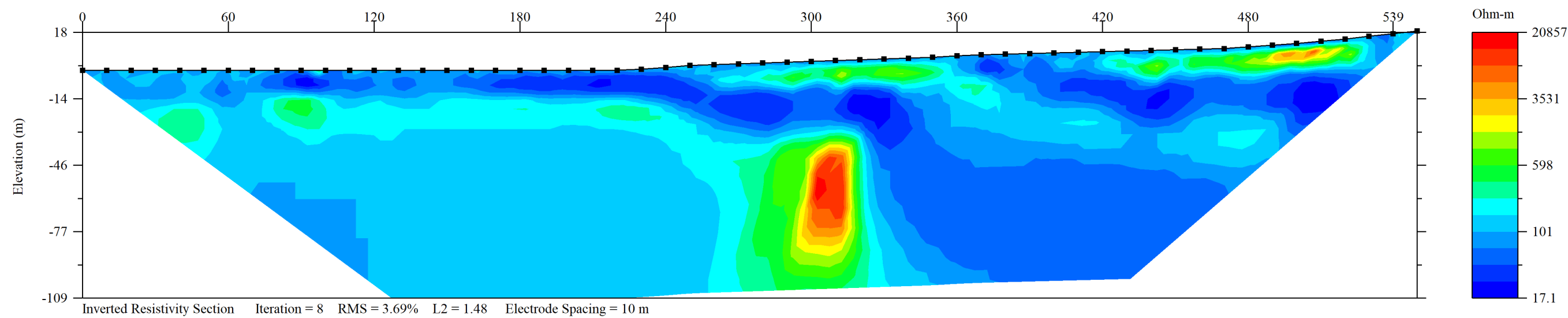
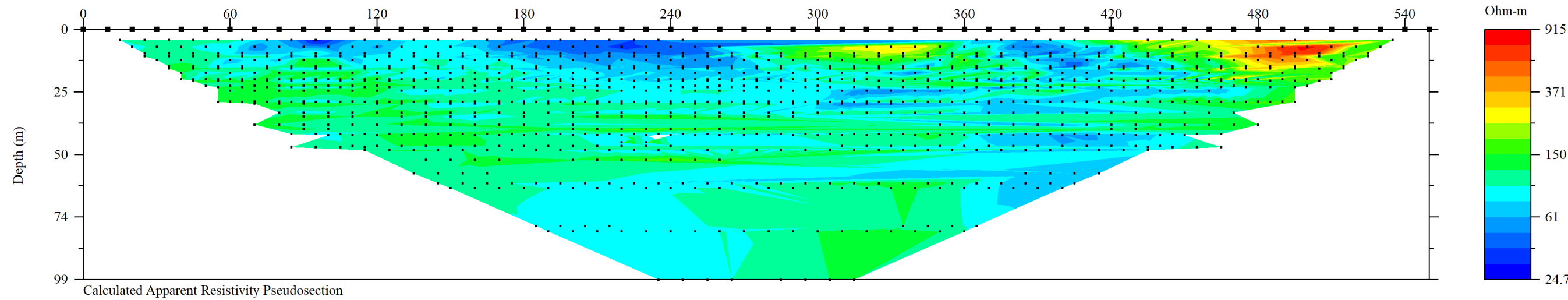
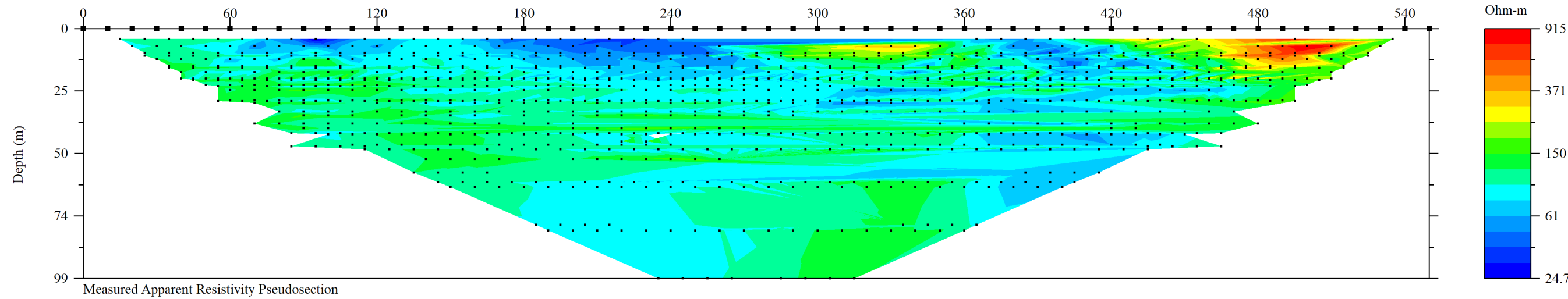


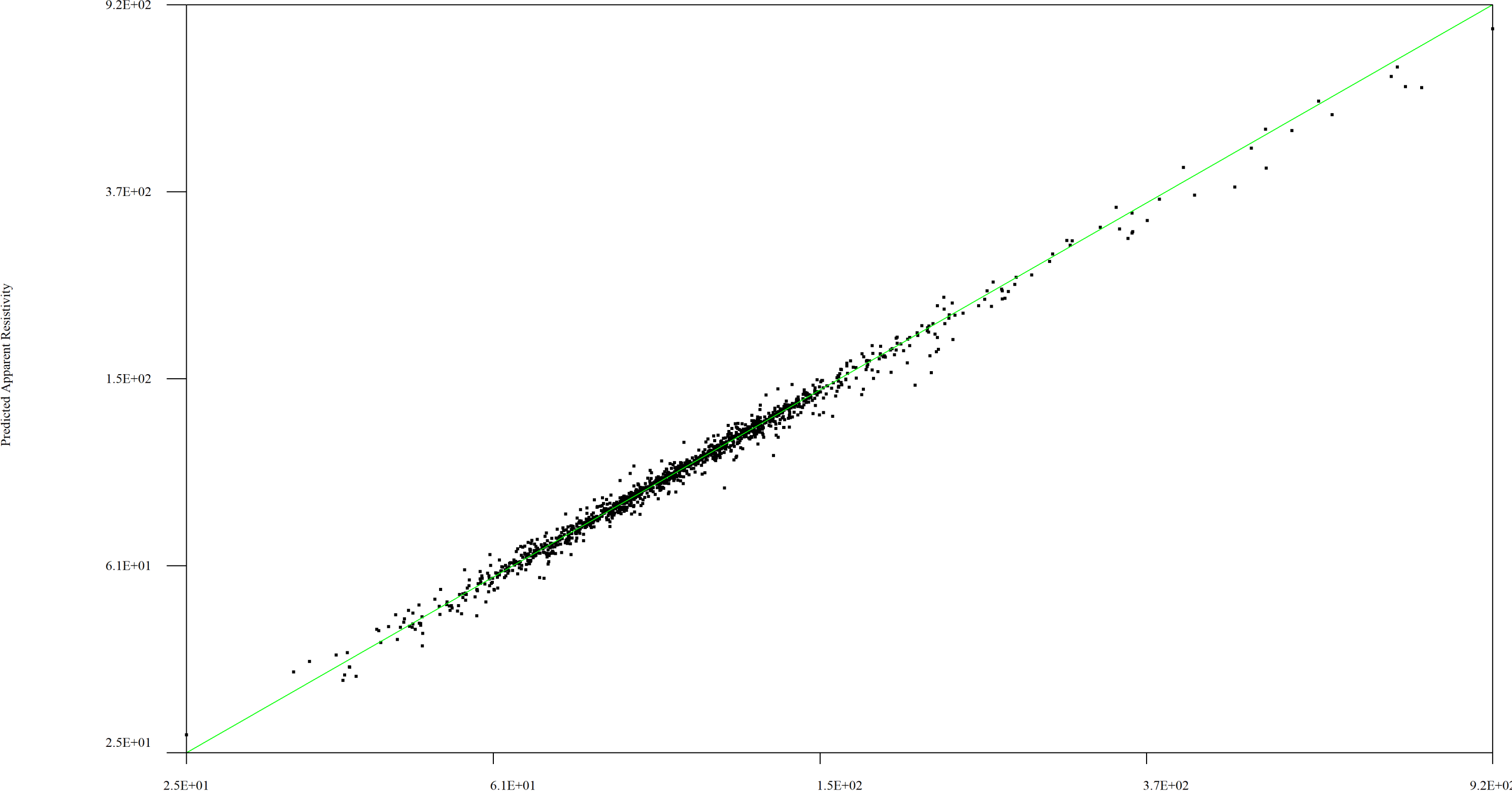
APPENDIX B

Electrical Resistivity Tomography Model Inversions and Data Residuals

BRCA1_trial3.stg

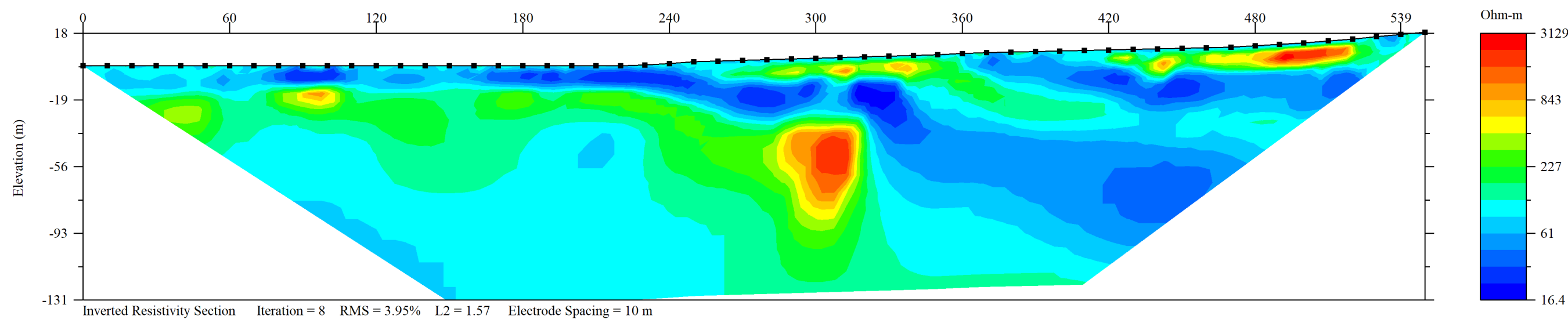
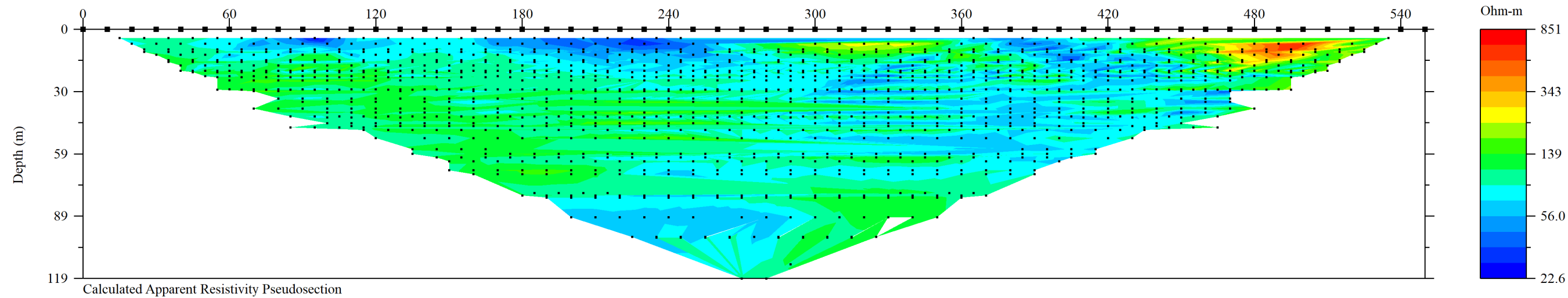
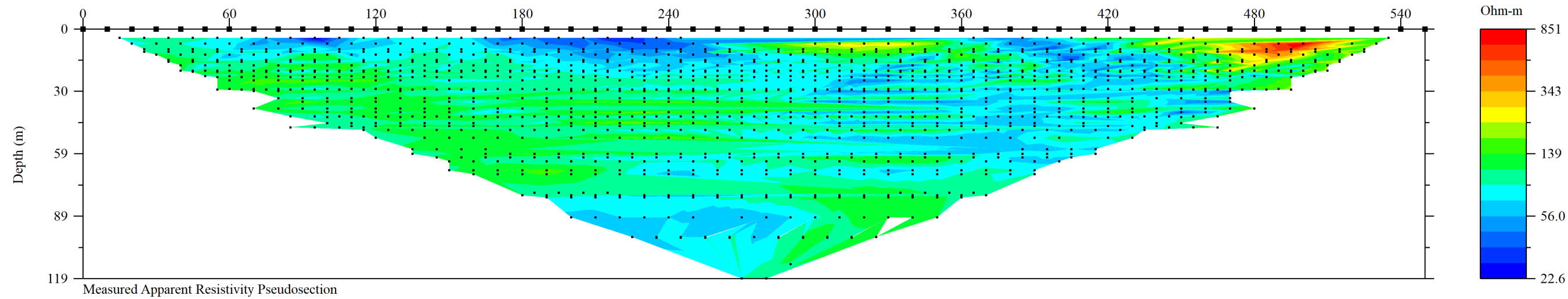


Crossplot of Measured vs Predicted Apparent Res. Data

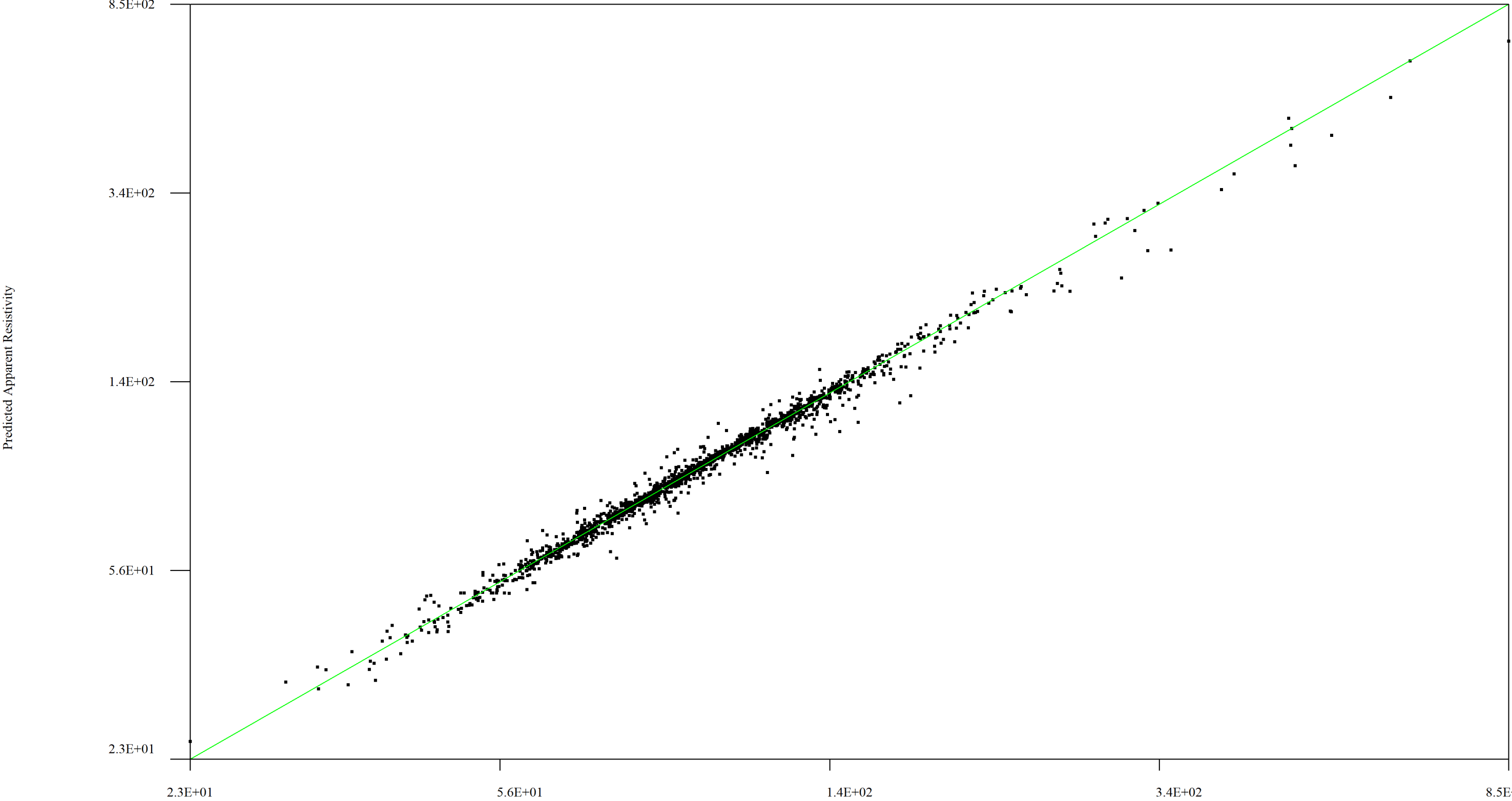


Iteration = 8 RMS = 3.69% L2 = 1.48 Electrode Spacing = 10 m

BRCA1B_trial4.stg

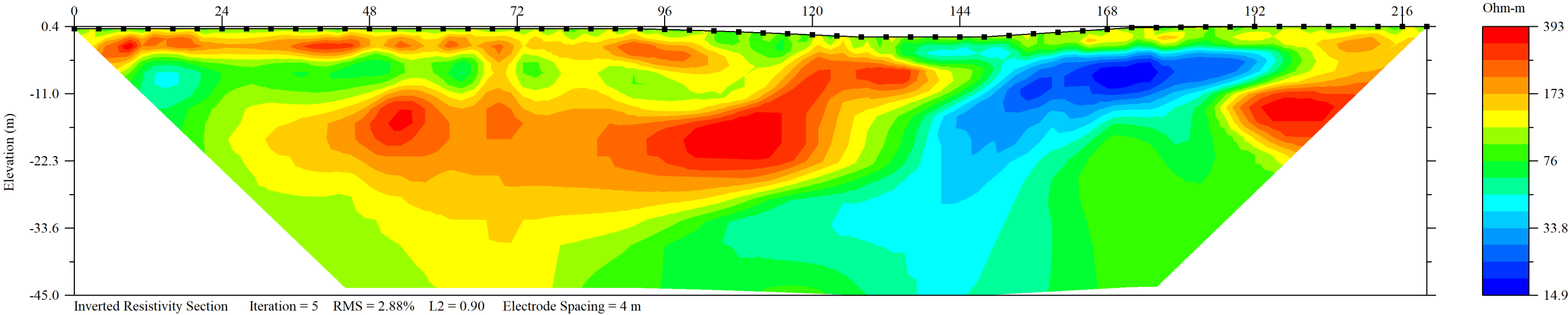
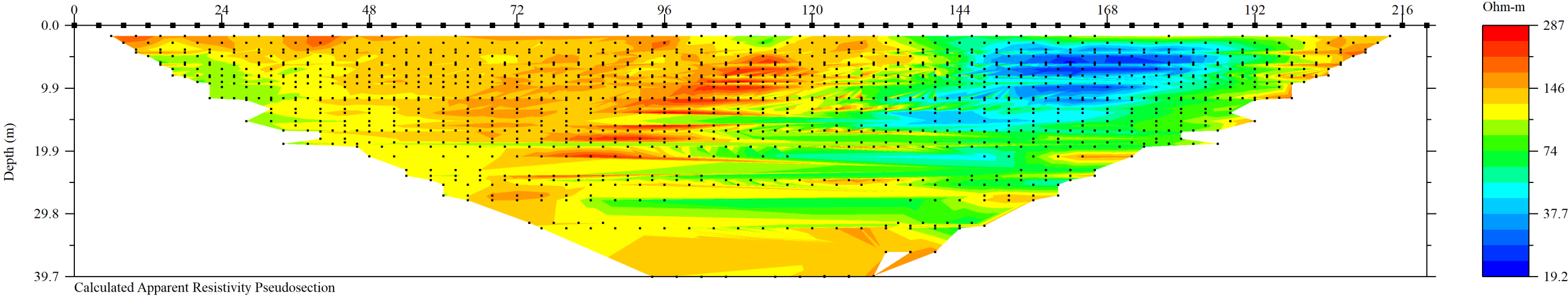
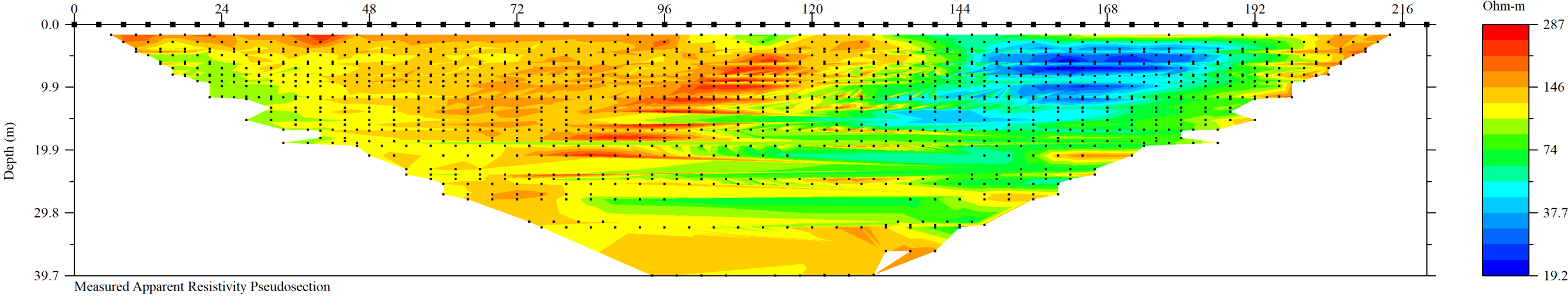


Crossplot of Measured vs Predicted Apparent Res. Data

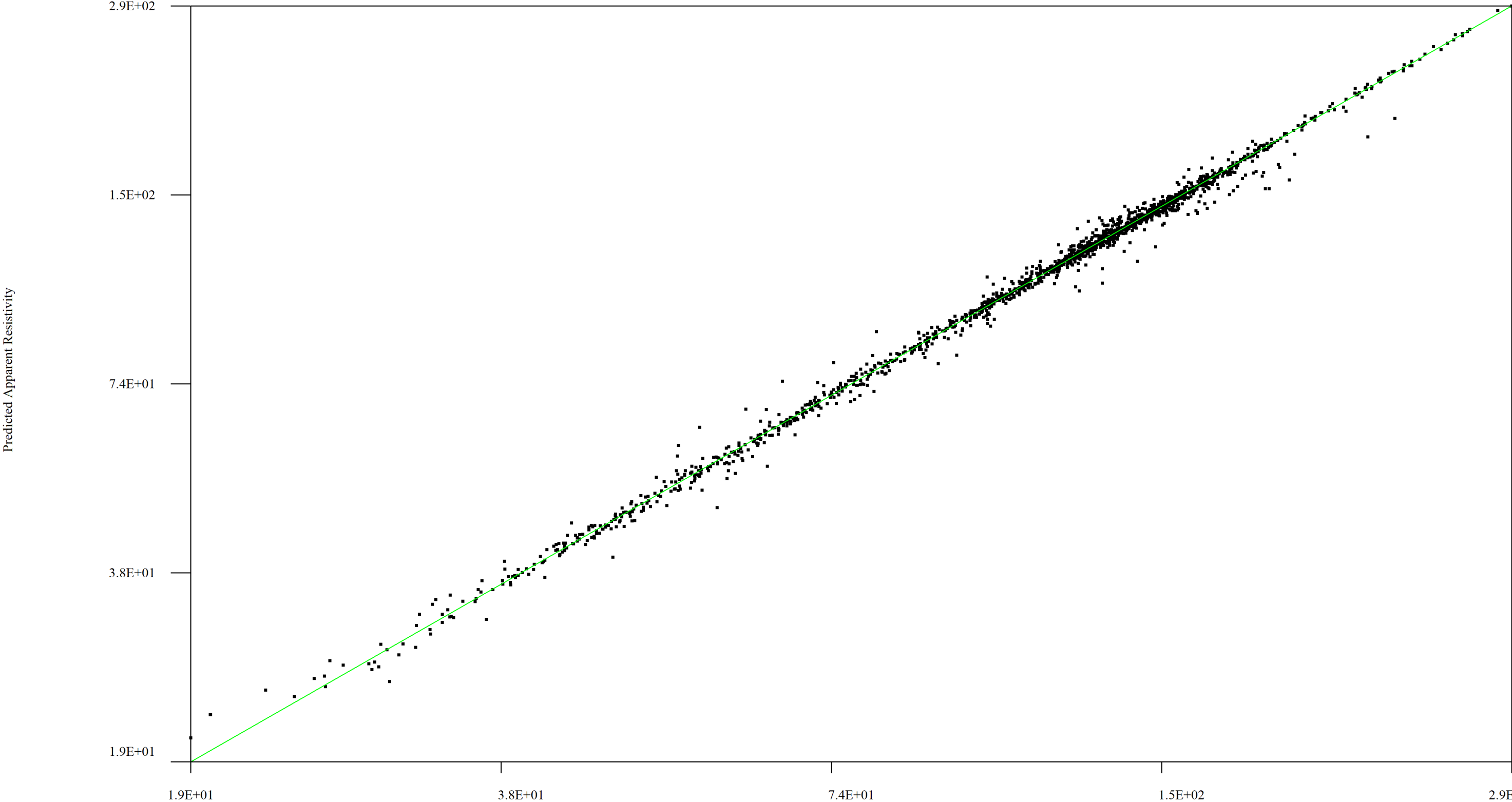


Measured Apparent Resistivity (ohm-m)
Iteration = 8 RMS = 3.95% L2 = 1.57 Electrode Spacing = 10 m

BRCA3_trial3.stg

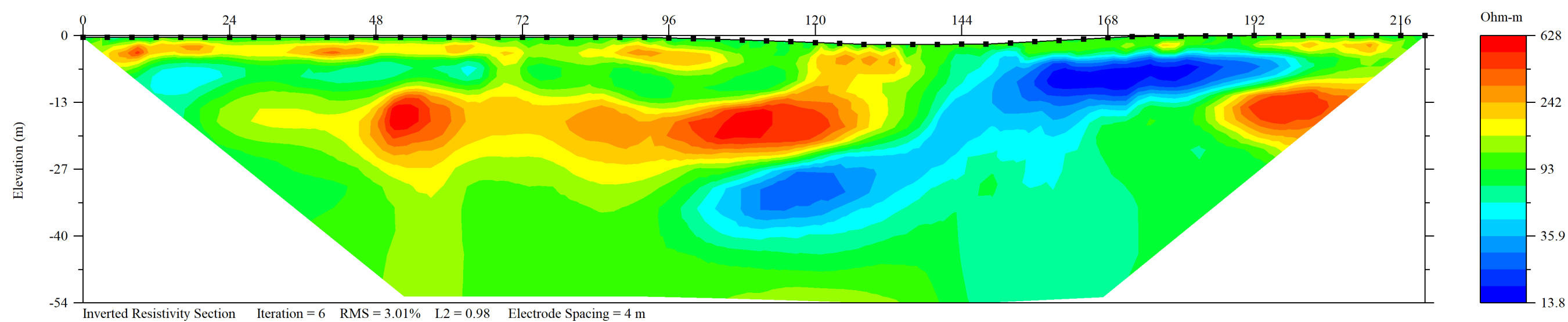
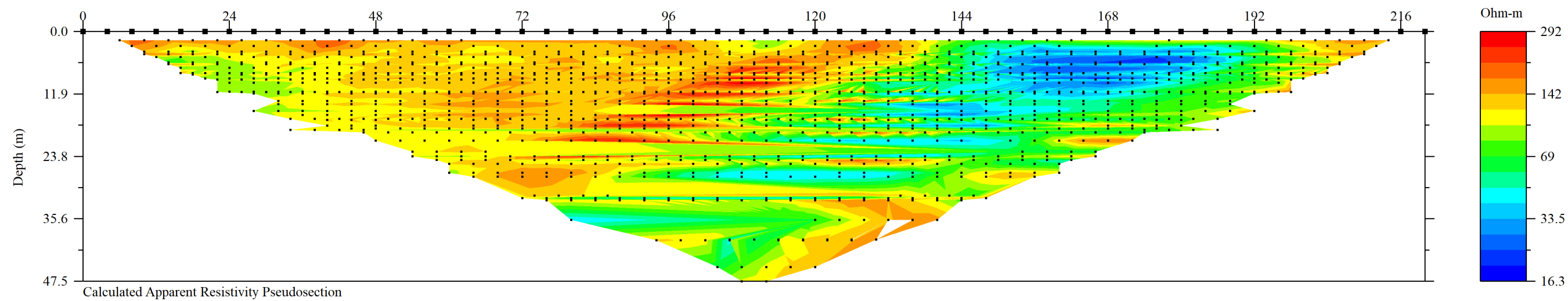
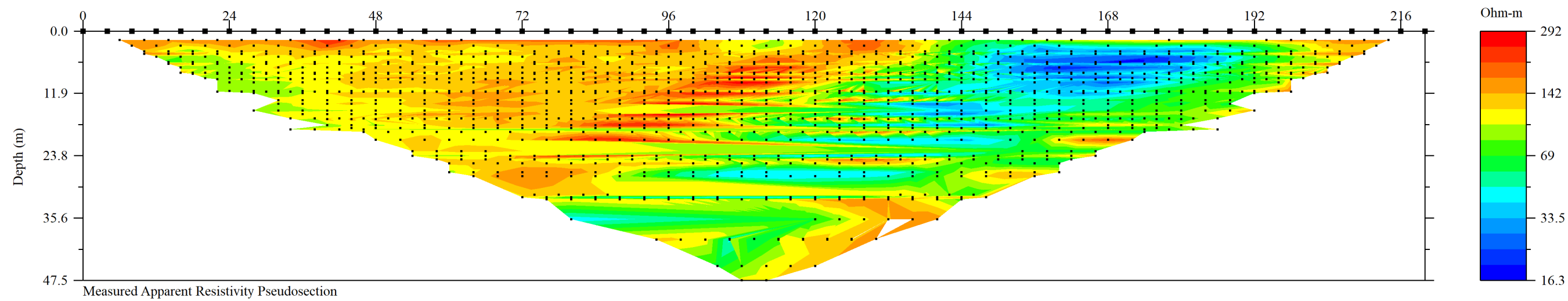


Crossplot of Measured vs Predicted Apparent Res. Data

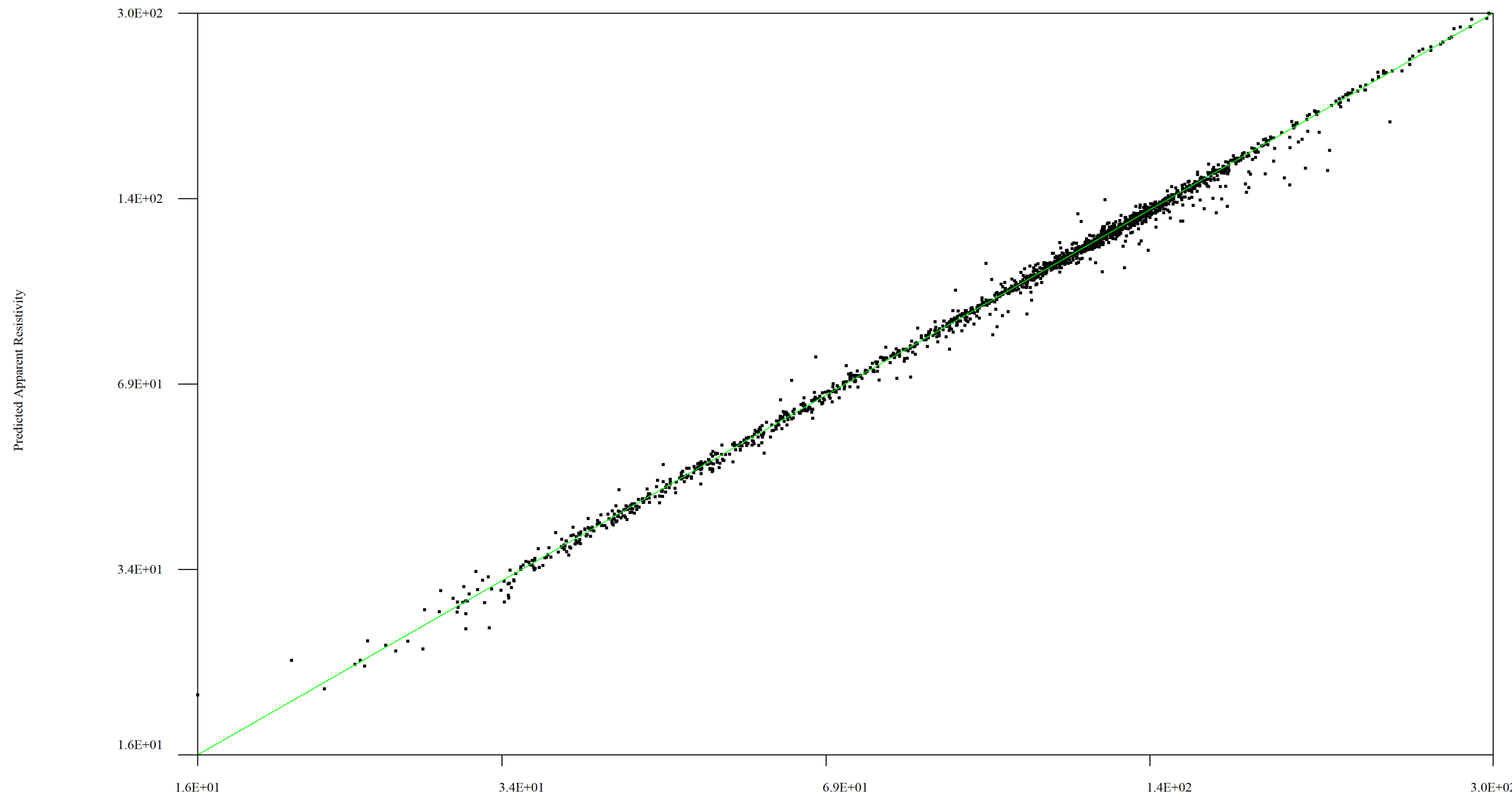


Iteration = 5 Measured Apparent Resistivity (ohm-m) RMS = 2.88% L2 = 0.90 Electrode Spacing = 4 m

BRCA3B_trial3.stg

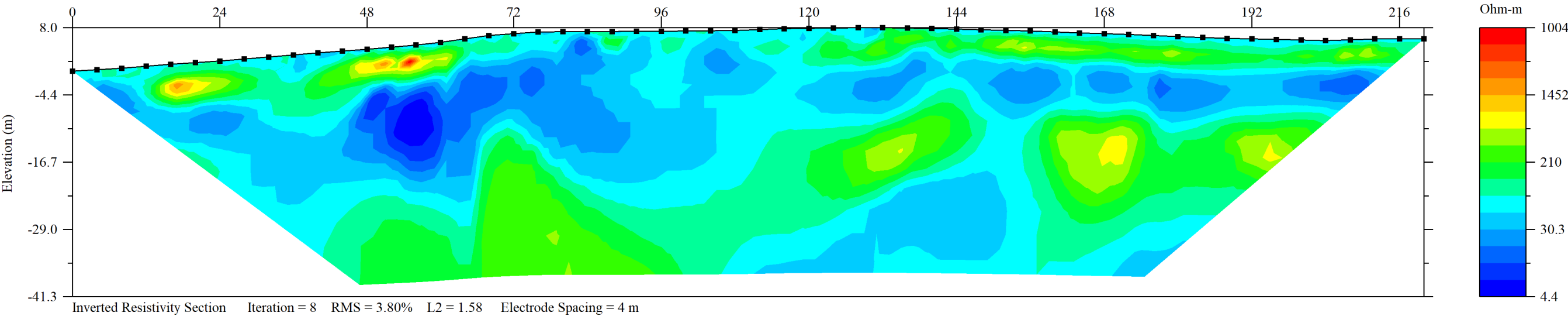
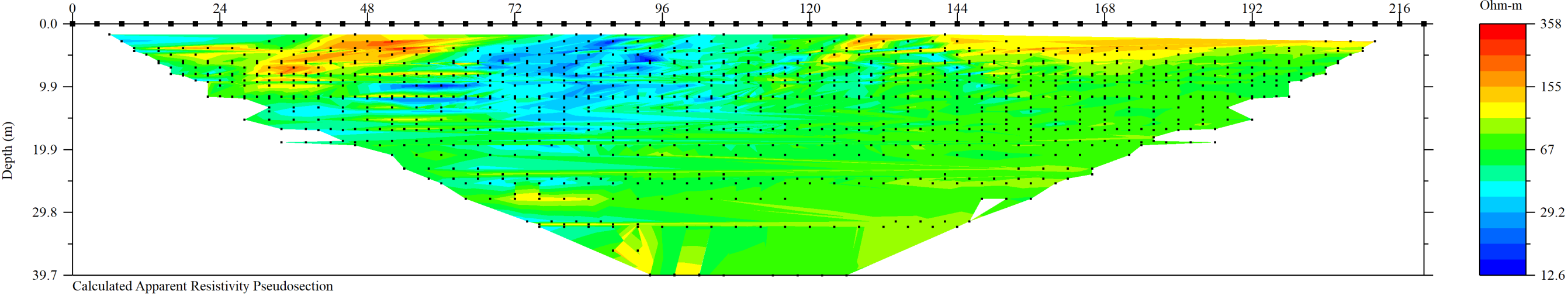
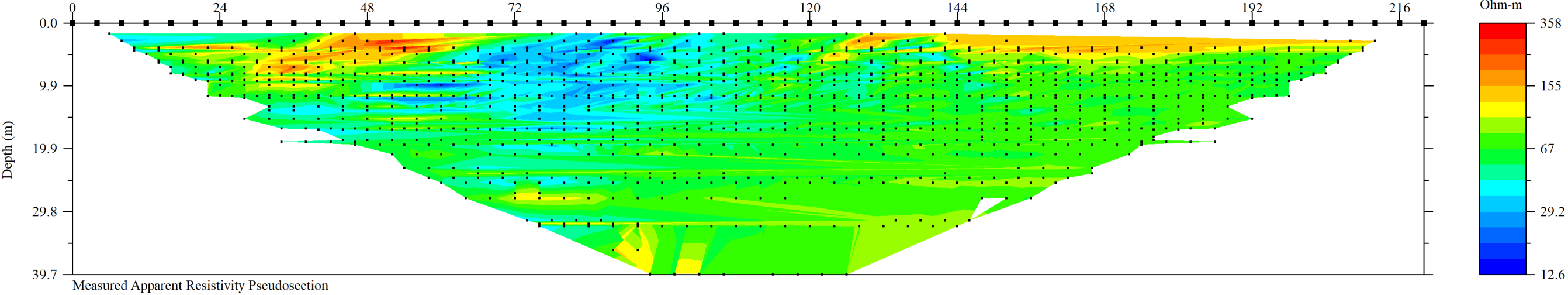


Crossplot of Measured vs Predicted Apparent Res. Data

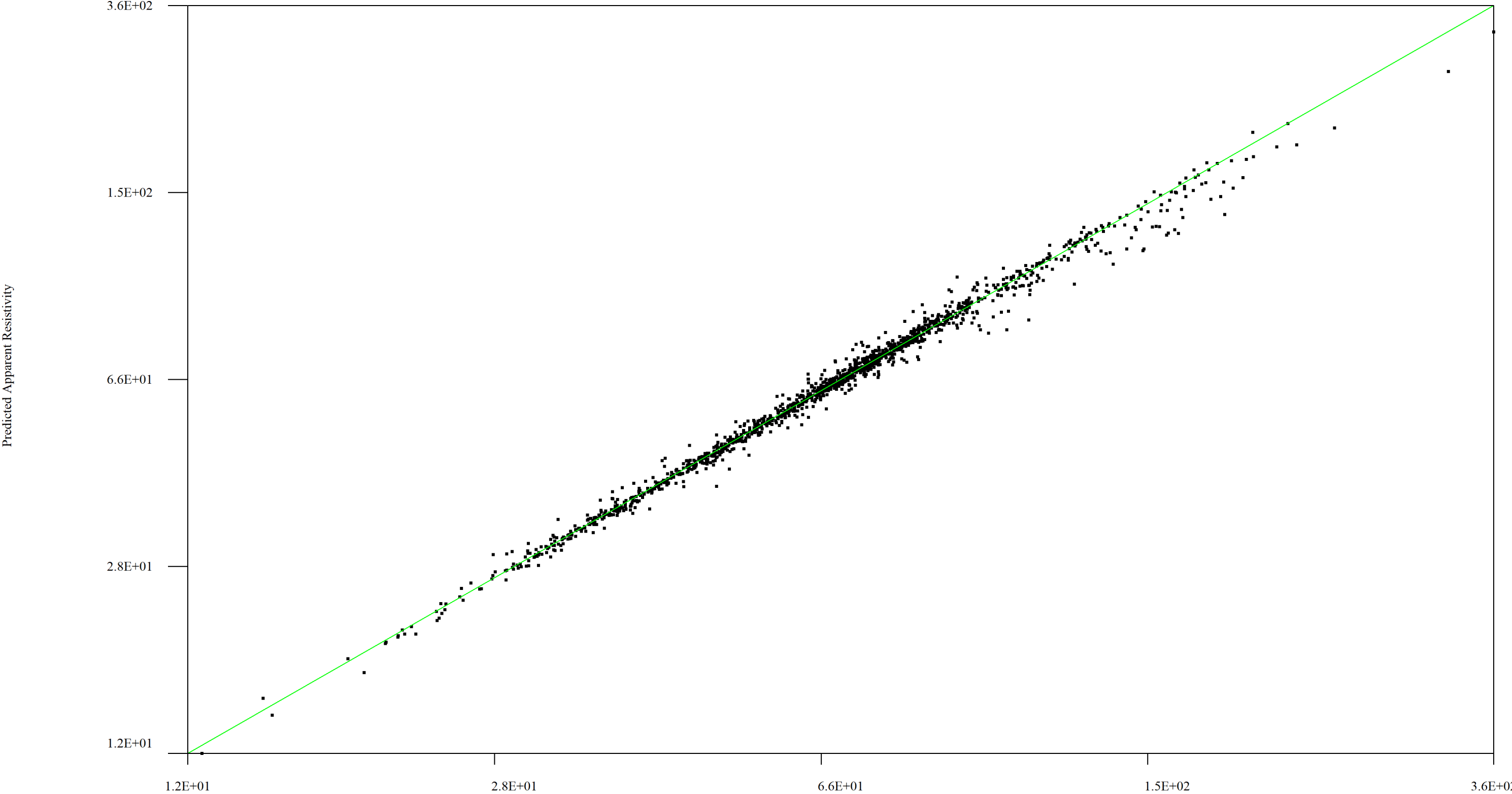


Measured Apparent Resistivity (ohm-m)
Iteration = 6 RMS = 3.01% L2 = 0.98 Electrode Spacing = 4 m

BRCA5_trial5.stg

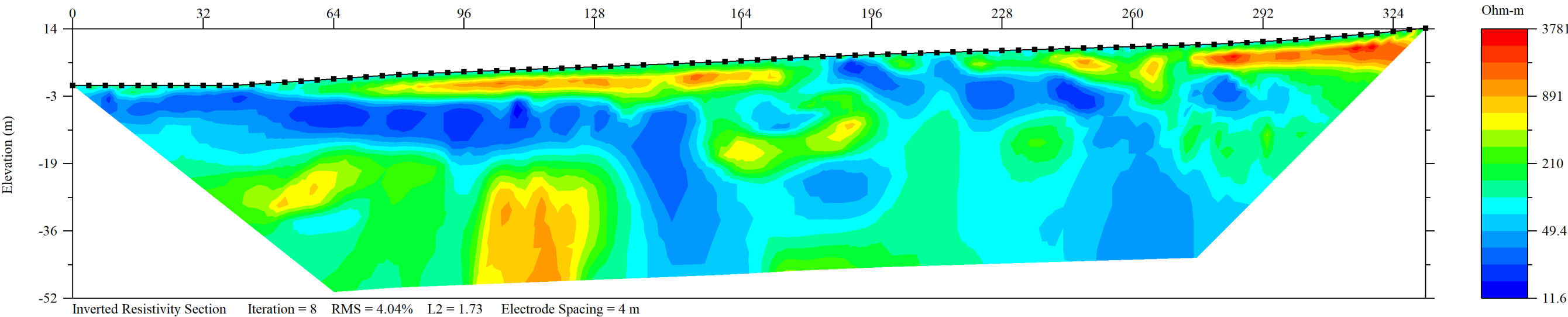
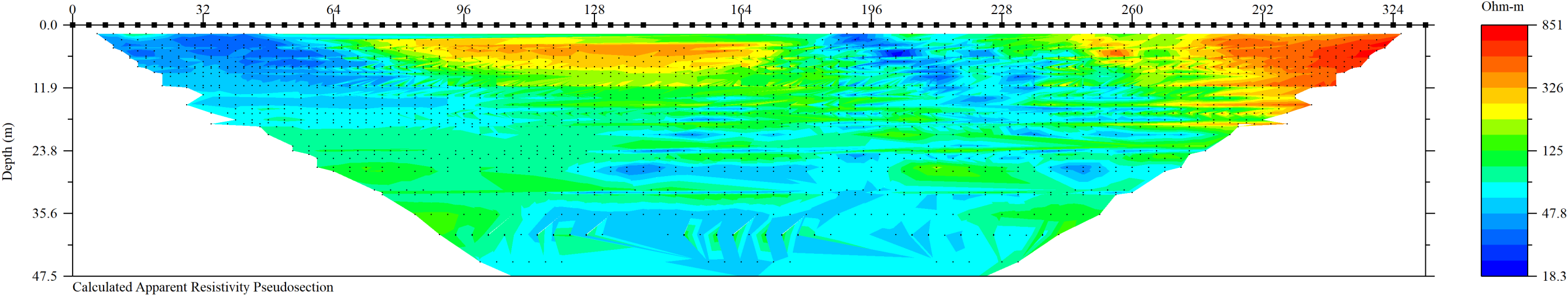
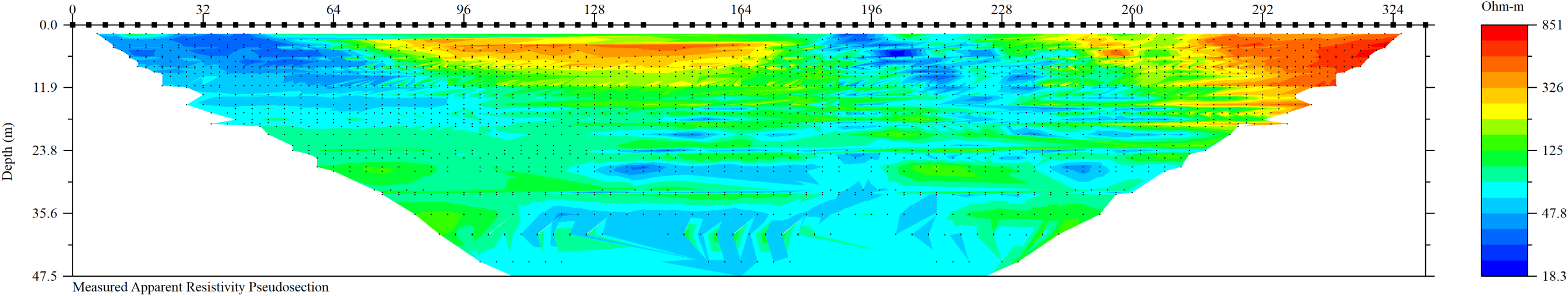


Crossplot of Measured vs Predicted Apparent Res. Data

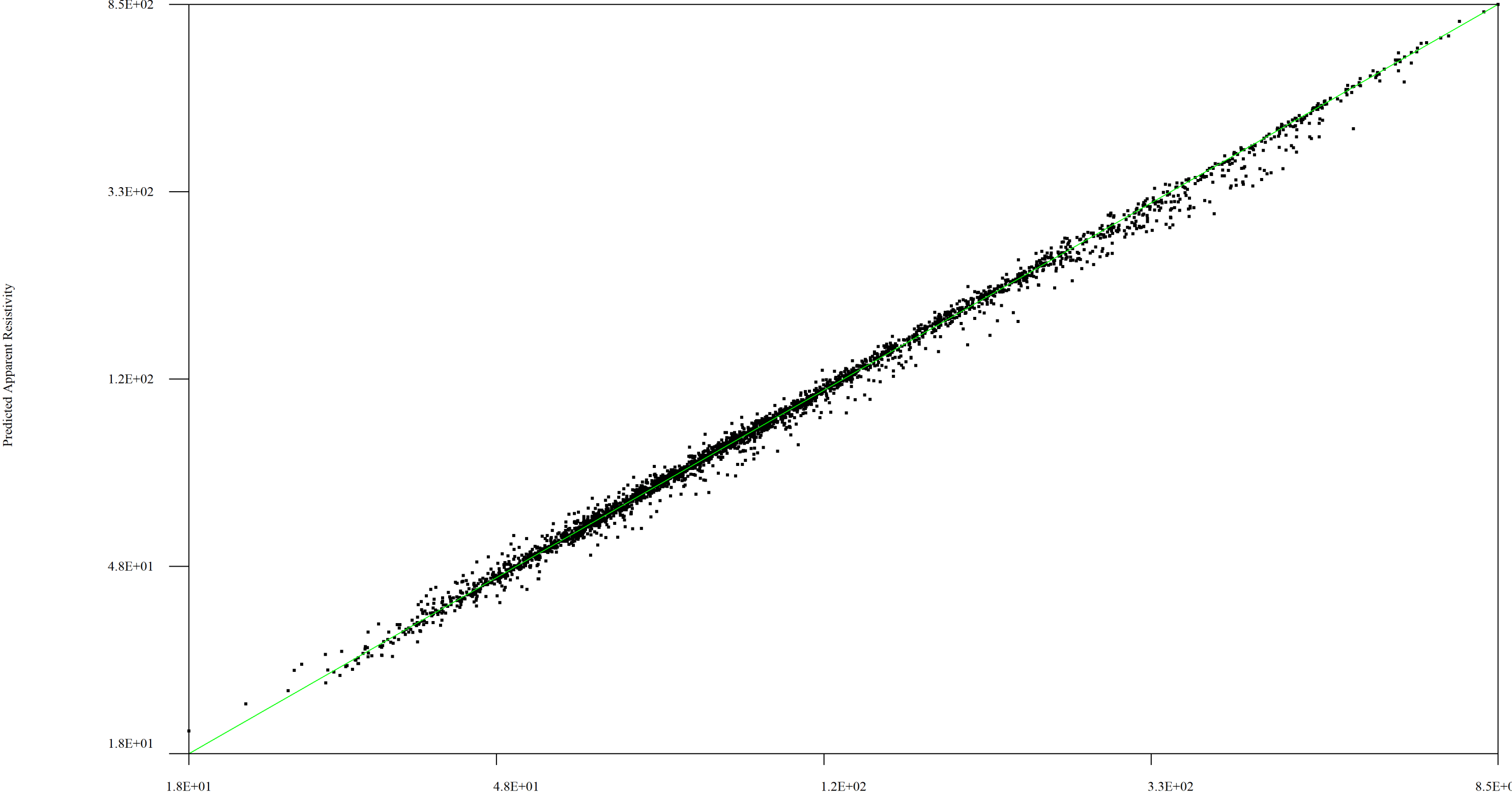


Iteration = 8 RMS = 3.80% L2 = 1.58 Electrode Spacing = 4 m

BRCA7_trial5.stg



Crossplot of Measured vs Predicted Apparent Res. Data



Iteration = 8 Measured Apparent Resistivity (ohm-m) RMS = 4.04% L2 = 1.73 Electrode Spacing = 4 m