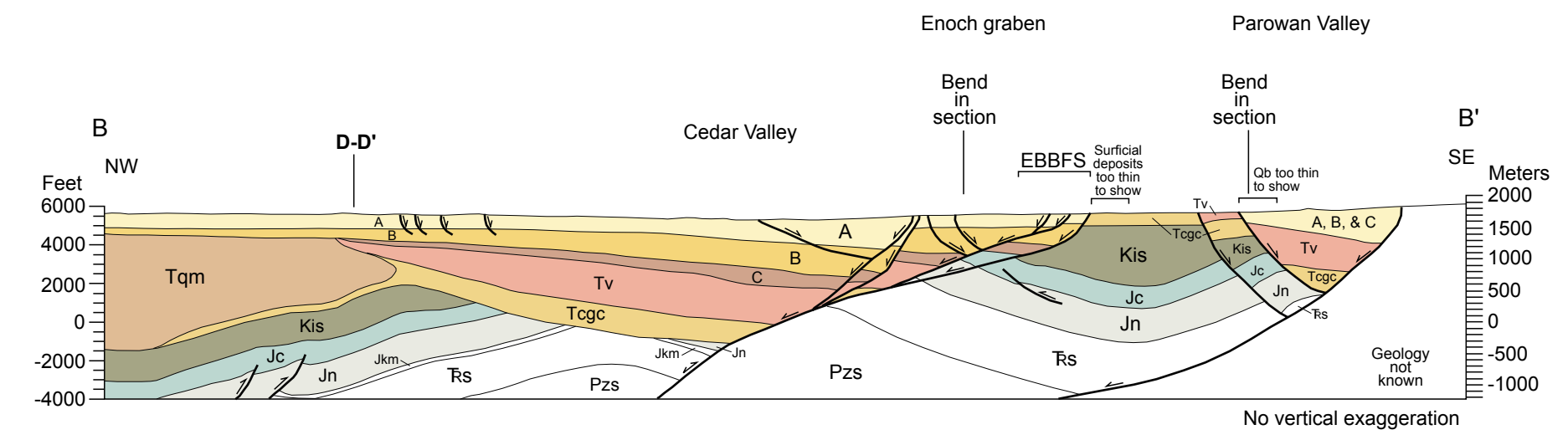
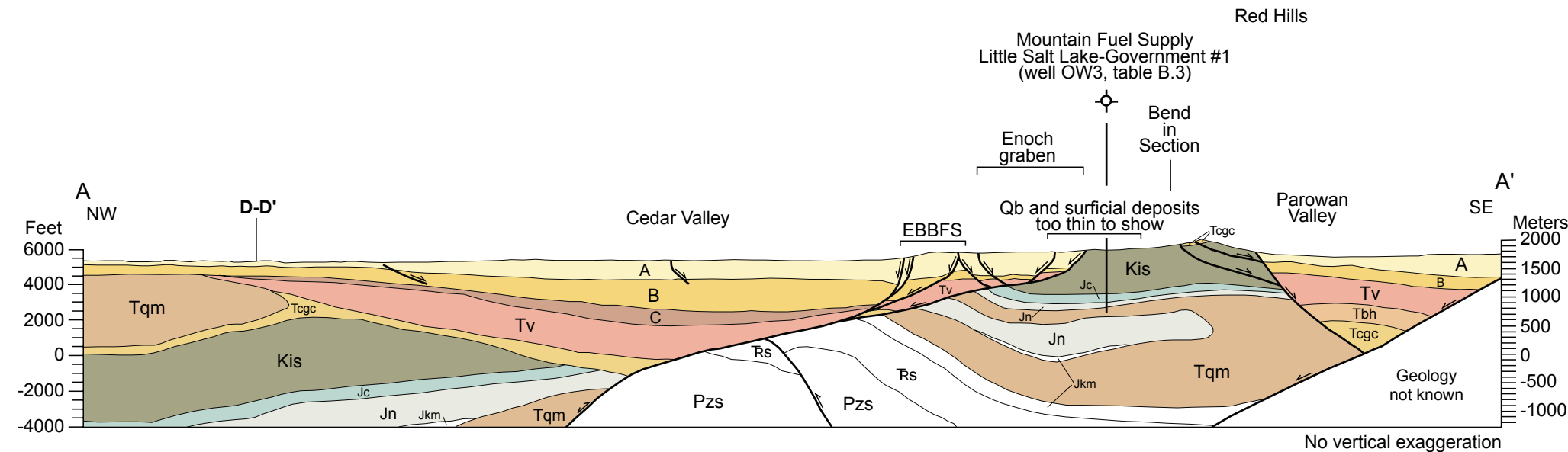


Generalized Cross Sections  
of Cedar Valley and Adjacent Areas,  
Using Seismic Stratigraphy for Basin-Fill Units  
Locations on Plate 1

SPECIAL STUDY 103  
Plate 2  
2002



Explanation  
See figure 5 and appendix A for unit descriptions

The upper part of unit A is composed of surficial units shown on plate 1 that are too thin to show on these cross sections.

EBBFS Eastern basin-bounding fault system

Fault - arrow shows relative motion of hanging wall.

Fault - thrust or reverse fault of Late Cretaceous age that has been reactivated as a normal fault during Miocene time. In cross sections A-A', B-B', and C-C', some faults are shown as reactivated thrust or reverse faults where they juxtapose pre-Tertiary units, and as normal faults where Tertiary units are in their hanging walls.

Jkm - Kayenta and Moenave Formations, undivided

Rs - Triassic sedimentary rocks, undivided - includes Chinle and Moenkopi Formations

