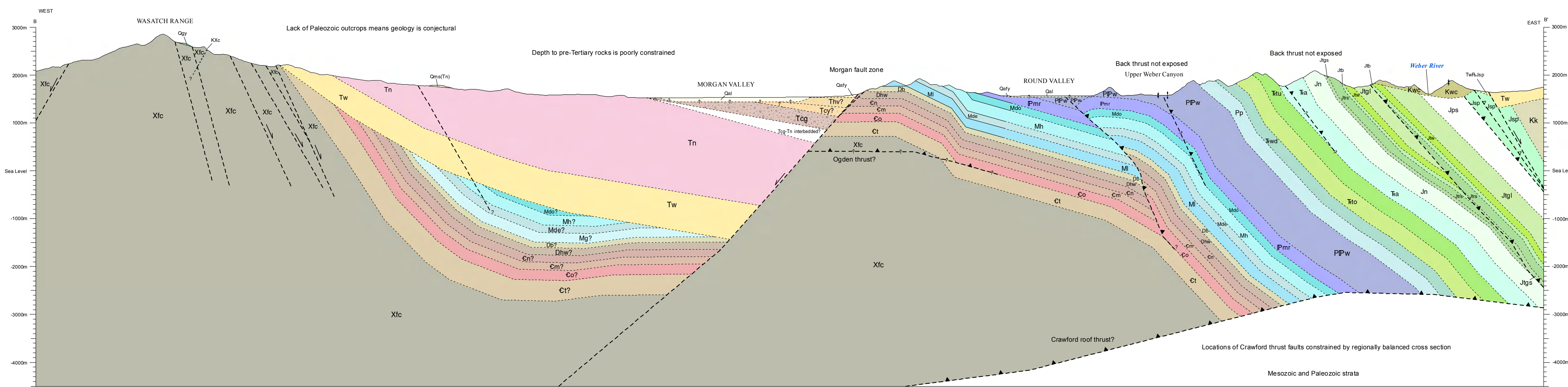
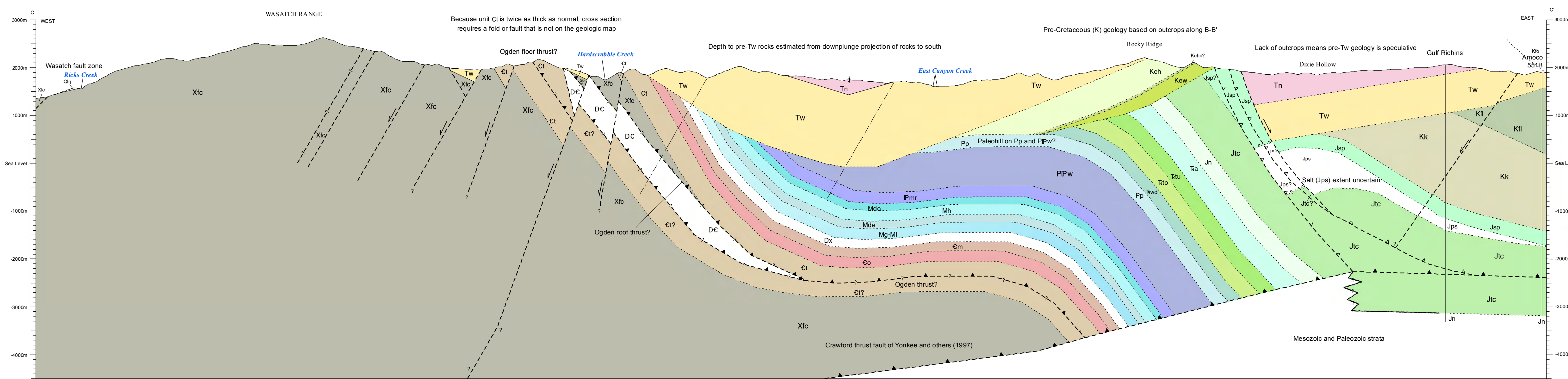


Surficial deposits omitted for clarity. Offset on some faults too small to show - 1/2 mm on map = 25 m on ground



Most surficial deposits omitted for clarity. Offset on some faults too small to show



Most surficial deposits omitted for clarity. Offset on some faults too small to show

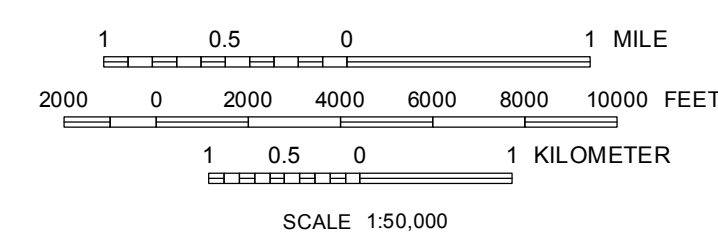
Although this product represents the work of professional scientists, the Utah Department of Natural Resources, Utah Geological Survey, makes no warranty, expressed or implied, regarding its suitability for a particular use, and does not guarantee accuracy or completeness of the data. The Utah Department of Natural Resources, Utah Geological Survey, shall not be liable under any circumstances for any direct, indirect, special, incidental, or consequential damages with respect to claims by users of this product. For use at 1:50,000 scale only.

GEOLOGIC CROSS SECTIONS OF THE MORGAN VALLEY AREA, MORGAN, WEBER, SALT LAKE, DAVIS, AND SUMMIT COUNTIES, UTAH

Compiled by Jon K. King

2012

See Appendix D for unit descriptions and symbols



Project Manager: Mike Lowe
 GIS and Cartography: Richard Emerson
 Utah Geological Survey
 1594 West North Temple, Suite 2118
 Salt Lake City, UT 84114-6100
 (801) 537-3300
<http://geology.utah.gov>

These cross sections were created from Geographic Information System (GIS) data.